

# Federation Square Lighting Stage 2

## Specialist Lighting

### DRAWING LEGEND

#### LIGHTING FIXTURES

— XXX Rectangular Luminaire  
XXX denotes Lighting type (Refer to Lighting Schedule)

○ XXX Circular Luminaire  
XXX denotes Lighting Type (Refer to Lighting Schedule)

--- XXX Strip Light  
XXX denotes Lighting Type (Refer to Lighting Schedule)

#### LIGHTING NOTATURE

← Denotes Lighting Direction

#### LINESTYLES

— Denotes existing to be Demolished

— Denotes proposed new construction

Drawing Number	Drawing Name	Revision
L-00-000	COVER SHEET & DRAWING INDEX	P01
L-00-001	LUMINAIRE SCHEDULE	P01
L-01-000	SITE PLAN	P01
L-01-001	NGV SOUTH - UPPER LEVEL - LIGHTING LAYOUT	P01
L-01-002	NGV SOUTH - LOWER LEVEL - LIGHTING LAYOUT	P01
L-01-003	NGV NORTH - UPPER LEVEL - LIGHTING LAYOUT	P01
L-01-004	TRANSPORT HOTEL LIGHTING LAYOUT	P01
L-02-000	TRANSPORT HOTEL - FACADES 1	P01
L-02-001	TRANSPORT HOTEL - FACADES 2	P01
L-03-001	DETAILS 1	P01
L-03-002	DETAILS 2	P01
L-03-003	DETAILS 3	P01
L-03-004	DETAILS 4	P01

Rev	Date	By	Chkd	Appd
P01	05/04/24	AH	IK	TH

# ARUP

ABN: 18 000 966 165  
Sky Park, One Melbourne Quarter,  
699 Collins Street,  
Docklands VIC 3008  
ph: (03) 9668 5500  
www.arup.com

Client  
**MAP Co.**

Project Title  
**Federation Square Lighting Stage 2**

Drawing Title  
**COVER SHEET & DRAWING INDEX**

Scale at A1 N.T.S.

Role Specialist Lighting

Suitability Contract Documentation

Arup Job No **299281-00** Rev **P01**

Drawing Number  
**L-00-000**

Luminaire Reference	Location	Image	Description	Manufacturer	Model	Optic	Colour Temperature	Colour rendering2	Dimension	Total Wattage	Delivered Output	Finish	IP rating	Control method	Accessories	Installation comments	Supplier	Notes	
XH-1	Handrails		Puck light	Planet lighting	Snap Asymmetric	elliptical asymmetric	3000K	80+	16mmDia x 15mmH	1.4W	165lm	316 Stainless steel	IP65	DALI	Cable connectors, installation tools (including hiring of drill jig set)	Follow manufacturers installation instructions	Euro luce Anthony Evans 0417 800 001		
XH-2	Balustrade at the back of NGV		Linear light	Litesource	VueLite	diffused	RGBW	NA	29mm x 28mm	24w/m	Red (625nm) = 145lm/m Green (525nm) = 310lm/m Blue (465nm) = 65lm/m White (2700K) = 500lm/m	PVC	IP67	DMX	Supply with relevant accessories and connectors, include rigid channel. Remote drivers as required in weatherproof container.	Mounted into existing balustrade as per detail	LiteSource Matt Roworth +61 423 486 309		
XD-3	Covered pathway		Surface mounted Can	BEGA	Compact Downlight	wide beam	3000K	80	130W x 135H x 130D	17W	1260lm	graphite	IP65	DALI	Supply with relevant installation kit and driver	Surface mounted on concrete ceiling	LightCulture Noah Dougherty 0424 029 829		
XD-4	Entry to NGV		Surface mounted spotlight	WE-EF	FLC210 LED	medium beam	3000K	80	150mmDia x 106mm	14W	1300lm	Grey aluminium	IP66	DALI	Glare shield (full cylindrical)	Mounted on existing structure via clamps, refer to install detail	Buckford Sam Davey +61 439 985 128		
XL-1	Exterior facades		Surface mounted linear light	Colour Kinetics	ColorGraze Intellihue Pwercore RGBW	30x60deg	RGBW	NA	1220mm L x 72mmW	74W	2768lm	aluminium	IP66	DMX	Glare Shield - 910503700748	Surface mounted as per detail	Bluebottle Andrew Livingston 0418 139 658		
XL-5-1	Crossbar Building structural frame		Glowing linear light	Colour Kinetics	Graze Compact Powercore	10x60deg	RGBW	NA	1220mmL x 42mmW x 45mmH	32.3W	R-900lm G-1300lm B-497 Mint white - 1679	aluminium	IP66	DMX	Supply with relevant installation kit	Mounted on custom bracket as per detail	Bluebottle Andrew Livingston 0418 139 658		
XL-5-2	Crossbar Building structural frame		Glowing linear light	Colour Kinetics	Graze Compact Powercore	10x60deg	RGBW	NA	45.05mmH x 306.3mmL x 42.2mmW	8.4W	R 161 / G 414 / B 105 / W 339	aluminium	IP67	DMX	Supply with relevant installation kit	Mounted on custom bracket as per detail	Bluebottle Andrew Livingston 0418 139 658		
XL-11	Covered pathway		Linear light	Litesource	VueLite	diffused	RGBW	NA	29mm x 28mm	24w/m	Red (625nm) = 145lm/m Green (525nm) = 310lm/m Blue (465nm) = 65lm/m White (2700K) = 500lm/m	PVC	IP67	DMX	Supply with relevant accessories and connectors, include rigid channel. Remote driver as required in weather proof container	Mounted into ceiling mesh structure aimed upwards, refer to detail	LiteSource Matt Roworth +61 423 486 309		
XS-1	Façade cladding		Spotlight	WE-EF	FLC230-CC LED	Narrow beam	RGBW	NA	260mmDia x 185mmW	48W	3200lm	Grey aluminium	IP66	DMX	Glare shield (full cylindrical)	pole mounted, refer to install details	Buckford Sam Davey +61 439 985 128	Final qty of order to be verified against the existing stock from Stage 1 works	
XS-2	Façade cladding		Spotlight	WE-EF	FLC230-CC LED	Medium beam	RGBW	NA	260mmDia x 185mmW	48W	3200lm	Grey aluminium	IP66	DMX	Glare shield (full cylindrical)	pole mounted, refer to install details	Buckford Sam Davey +61 439 985 128	Final qty of order to be verified against the existing stock from Stage 1 works	
XS-3	Façade cladding		Spotlight	WE-EF	FLC240-CC EES.BEAM	Super spot+elliptical lens	RGBW	NA	340mm Dia x 190mm	84W	4366.8 lm	Grey aluminium	IP66	DMX	Glare shield (half)	Surface mounted on existing and new bracket as per detail	Buckford Sam Davey +61 439 985 128		
XS-4	Façade cladding		Spotlight	WE-EF	FLC230-CC LED	elliptical beam	RGBW	NA	260mmDia x 185mmW	48W	2800lm	Grey aluminium	IP67	DMX	Glare shield (half)	Surface mounted on existing bracket, refer to drawing notes	Buckford Sam Davey +61 439 985 128		
XS-7E	River terrace, ground pattern		Pole mounted Gobo projector - existing stock	Meyer	Monospot Gobo	framing optic/gobo	6500K	70	390mmL x 305mmW, 205mmDia	47W	1000lm	grey to match we-ef products	IP67	wireless DMX	Customised gobo	Pole mounting bracket, refer to detail for distribution on pole	MLP Katie Ellis +61 451 771 544	This is existing light from Stage -1 works	
XS-7E			Gobo for projector	GoboTech	Full colour Glass Gobo	GC4313	-	-	50mm dia	-	-	-	-	-	size to match projector	fitted into projector prior to install	Gobo Tech tel:(+61) 07 5573 3177		
XS-12	Façade cladding		Spotlight	WE-EF	FLC230-CC EES.BEAM	Super spot+elliptical lens	RGBW	NA	260mmDia x 185mmW	48W	2800lm	Grey aluminium	IP67	DMX	Glare shield (half)	Surface mounted on new bracket, refer to drawing notes	Buckford Sam Davey +61 439 985 128		
XW-3	Existing wall light location along stairs		Wall recessed light in lieu of existing wall light	WE-EF	STL259 LED	asymmetric	3000K	80	250mmL x 92mmH x100mmD	7.7W	22lm	Grey aluminium	IP66	On/Off	Installation housing and relevant drivers	Recessed into existing light location	Buckford Sam Davey +61 439 985 128		
Brackets																			
BR-1	Transport Hotel		New bracket as per current bracket design	Custom	Bracket	-	-	-	dimensions based on existing bracket design with extended length to fit lighting equipment	-	-	-	-	-	-	Installed into corners of Transport Hotel Façade. Refer to detail integration drawings	By Contractor		
BR-2	Transport Hotel		New bracket as per current bracket design	Custom	Bracket	-	-	-	dimensions based on existing bracket design with extended length to fit lighting equipment	-	-	-	-	-	-	Installed into corners of Transport Hotel Façade. Refer to detail integration drawings	By Contractor		

Drawing Notes:

1. These drawings shall be read in conjunction with the lighting specification and luminaire schedule.
2. All drawings in this package shall be printed in colour.
3. If any discrepancy occurs between the lighting designer's drawing and specification, the contractor shall assume greater/larger. Any discrepancy shall be referred to the lighting designer prior to proceeding with the work.
4. The contractor shall allow for all works to be completed in accordance with all relevant Australian Standards and Statutory Regulations and Requirements.
5. All dimensions shown shall be verified on site, lighting designer's drawings shall not be scaled.
6. Electrical contractor to confirm all luminaire quantities and length prior to procurement.
7. All driver locations to be agreed with site manager and lighting designer prior to installation.

P01	05/04/24	AH	IK	TH
CONTRACT DOCUMENTATION				
Rev	Date	By	Chkd	Appd

**ARUP**

ABN: 18 000 966 165  
 Sky Park, One Melbourne Quarter,  
 699 Collins Street,  
 Docklands VIC 3008  
 ph: (03) 9668 5500  
 www.arup.com

Client  
**MAP Co.**

Project Title  
**Federation Square Lighting Stage 2**

Drawing Title  
**LUMINAIRE SCHEDULE**

Scale at A1 N.T.S.

Role Specialist Lighting

Suitability Contract Documentation

Arup Job No  
**299281-00**

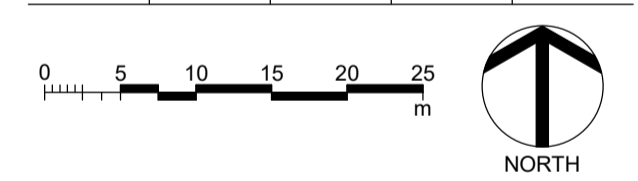
Rev  
**P01**

Drawing Number  
**L-00-001**



**OVERALL SITE FLOOR PLAN**  
1:500

P01	05/04/24	AH	IK	TH
CONTRACT DOCUMENTATION				
Rev	Date	By	Chkd	Appd



**ARUP**

ABN: 18 000 966 165  
Sky Park, One Melbourne Quarter,  
699 Collins Street,  
Docklands VIC 3008  
ph: (03) 9668 5500  
www.arup.com

Client  
**MAP Co.**

Project Title  
**Federation Square Lighting Stage 2**

Drawing Title  
**SITE PLAN**

Scale at A1 1 : 500

Role Specialist Lighting

Suitability Contract Documentation

Arup Job No <b>299281-00</b>	Rev <b>P01</b>
Drawing Number <b>L-01-000</b>	

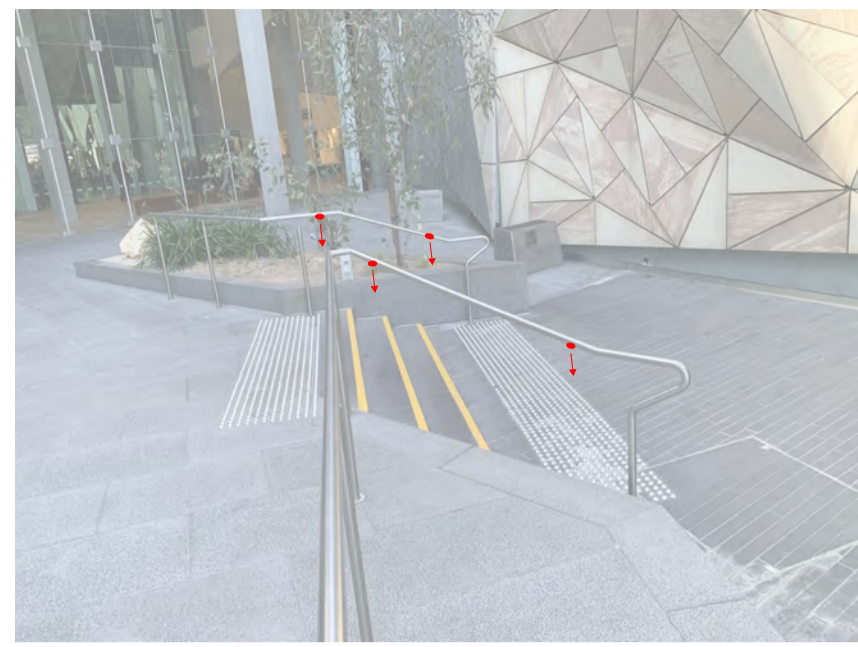


Figure 1.1

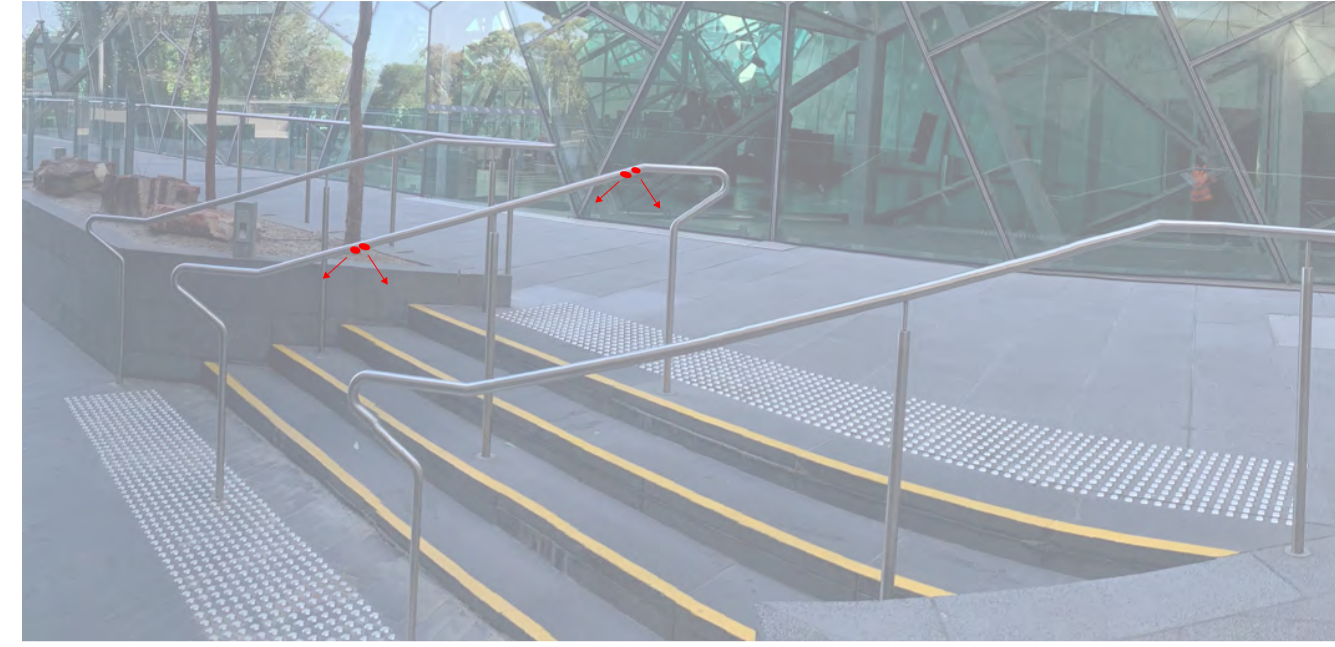


Figure 1.2



Figure 1.3



Figure 1.4

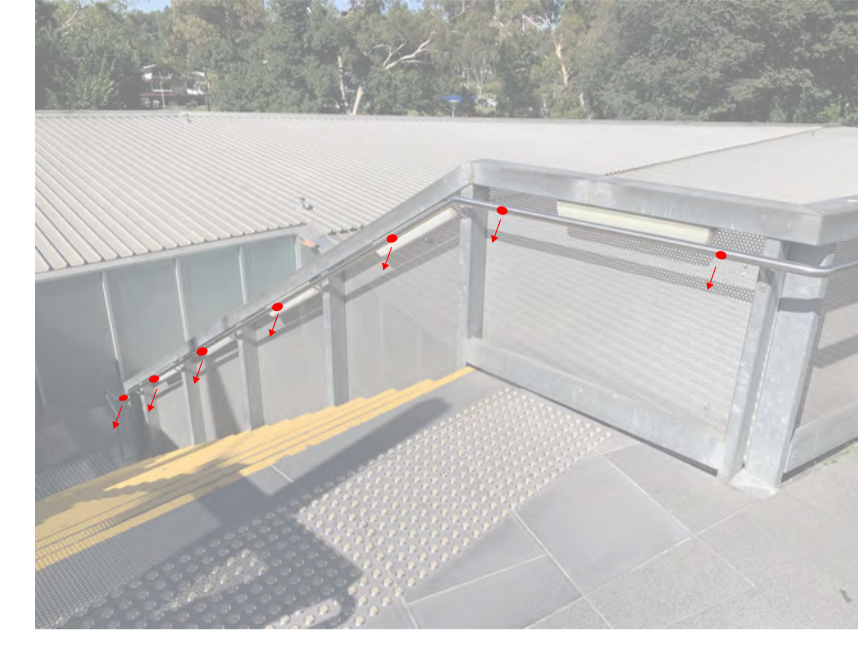


Figure 1.5

- Drawing Notes:
1. These drawings shall be read in conjunction with the lighting specification and luminaire schedule.
  2. All drawings in this package shall be printed in colour.
  3. If any discrepancy occurs between the lighting designer's drawing and specification, the contractor shall assume greater/larger. Any discrepancy shall be referred to the lighting designer prior to proceeding with the work.
  4. The contractor shall allow for all works to be completed in accordance with all relevant Australian Standards and Statutory Regulations and Requirements.
  5. All dimensions shown shall be verified on site, lighting designer's drawings shall not be scaled.
  6. Electrical contractor to confirm all luminaire quantities and length prior to procurement.
  7. All driver locations to be agreed with site manager and lighting designer prior to installation.
  8. Light fixtures to be recessed into existing wall light locations after removal of equipment. Ensure the surrounding wall finish stays intact.

REFER TO L-01-003 FOR CONTINUATION

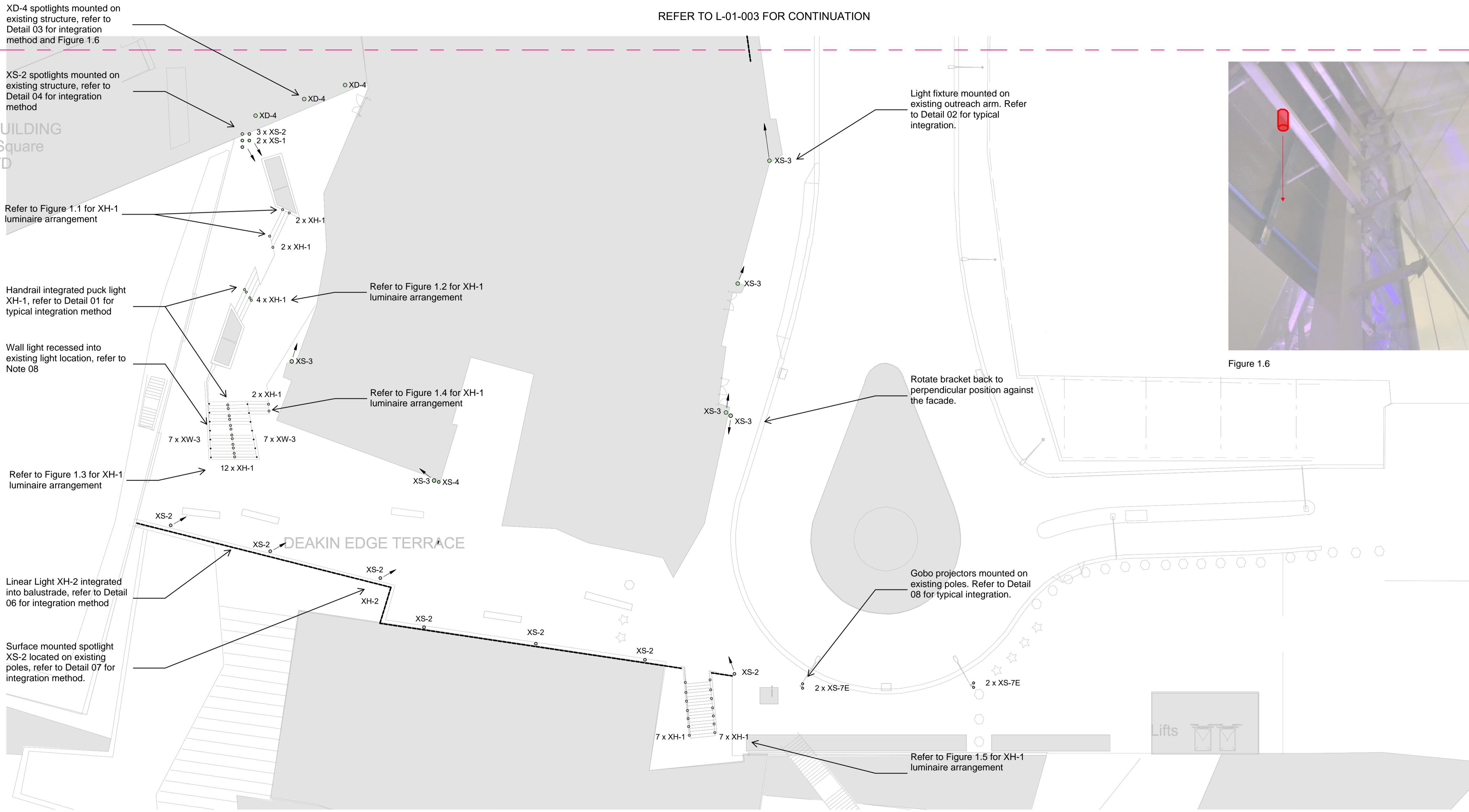


Figure 1.6

CROSSBAR BUILDING  
Federation Square  
PTY LTD

DEAKIN EDGE TERRACE

Lifts

NGV SOUTH - UPPER LEVEL FLOOR PLAN  
1:200

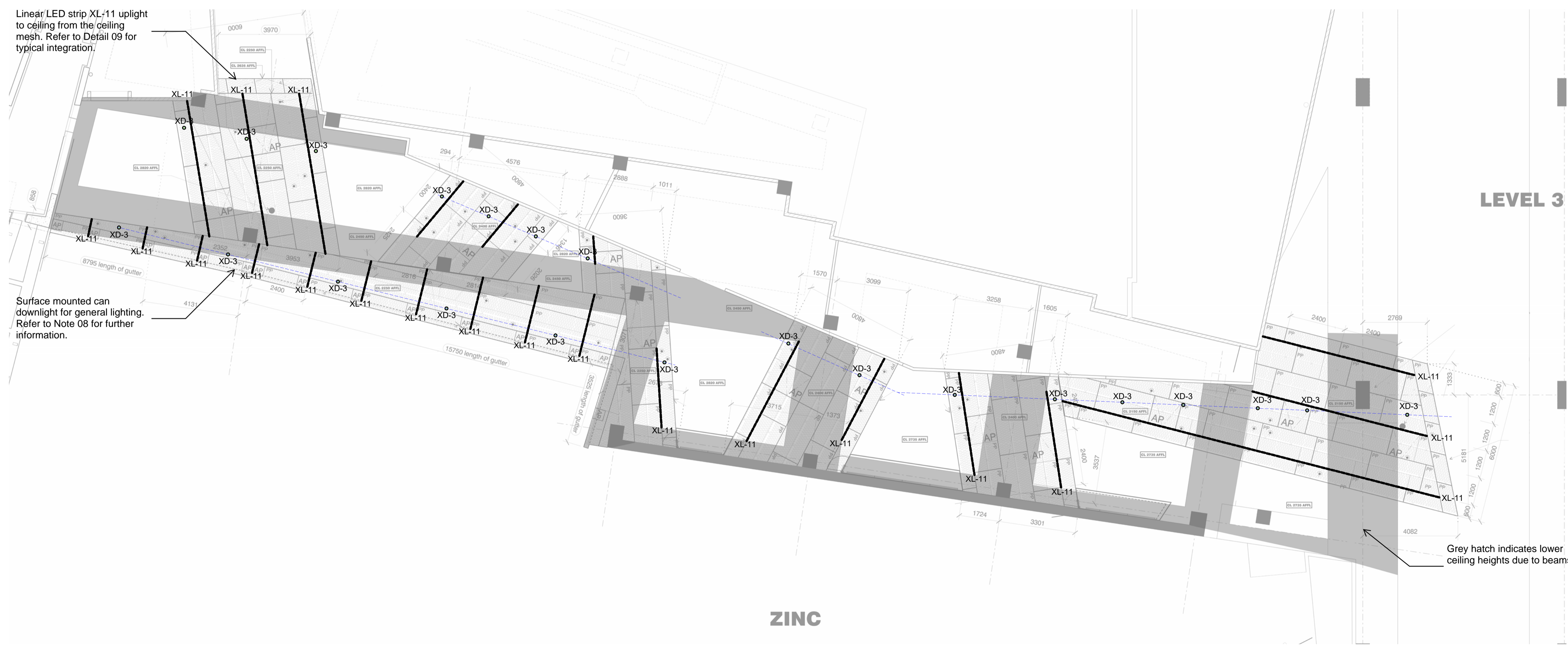
P01	05/04/24	AH	IK	TH
CONTRACT DOCUMENTATION				
Rev	Date	By	Chkd	Appd

**ARUP**  
 ABN: 18 000 966 165  
 Sky Park, One Melbourne Quarter,  
 699 Collins Street,  
 Docklands VIC 3008  
 ph: (03) 9668 5500  
 www.arup.com  
 Client  
**MAP Co.**

Project Title  
**Federation Square Lighting Stage 2**

Drawing Title  
**NGV SOUTH - UPPER LEVEL - LIGHTING LAYOUT**

Scale at A1	1 : 200
Role	Specialist Lighting
Suitability	Contract Documentation
Arup Job No	299281-00
Drawing Number	L-01-001
Rev	P01



- Drawing Notes:
1. These drawings shall be read in conjunction with the lighting specification and luminaire schedule.
  2. All drawings in this package shall be printed in colour.
  3. If any discrepancy occurs between the lighting designer's drawing and specification, the contractor shall assume greater/larger. Any discrepancy shall be referred to the lighting designer prior to proceeding with the work.
  4. The contractor shall allow for all works to be completed in accordance with all relevant Australian Standards and Statutory Regulations and Requirements.
  5. All dimensions shown shall be verified on site, lighting designer's drawings shall not be scaled.
  6. Electrical contractor to confirm all luminaire quantities and length prior to procurement.
  7. All driver locations to be agreed with site manager and lighting designer prior to installation.
  8. Mount downlights such that they are at minimum 300mm away from the large beams crossing the ceiling. Aim to mount lights with clean mesh below and avoid connecting lines or structure which would obstruct the light.

Linear LED strip XL-11 uplight to ceiling from the ceiling mesh. Refer to Detail 09 for typical integration.

Surface mounted can downlight for general lighting. Refer to Note 08 for further information.

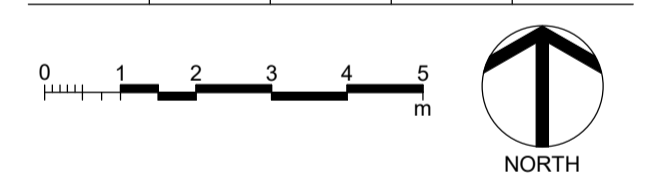
**LEVEL 3**

**ZINC**

Grey hatch indicates lower ceiling heights due to beams.

**NGV SOUTH - LOWER LEVEL FLOOR PLAN**  
1:100

P01	05/04/24	AH	IK	TH
CONTRACT DOCUMENTATION				
Rev	Date	By	Chkd	Appd



**ARUP**

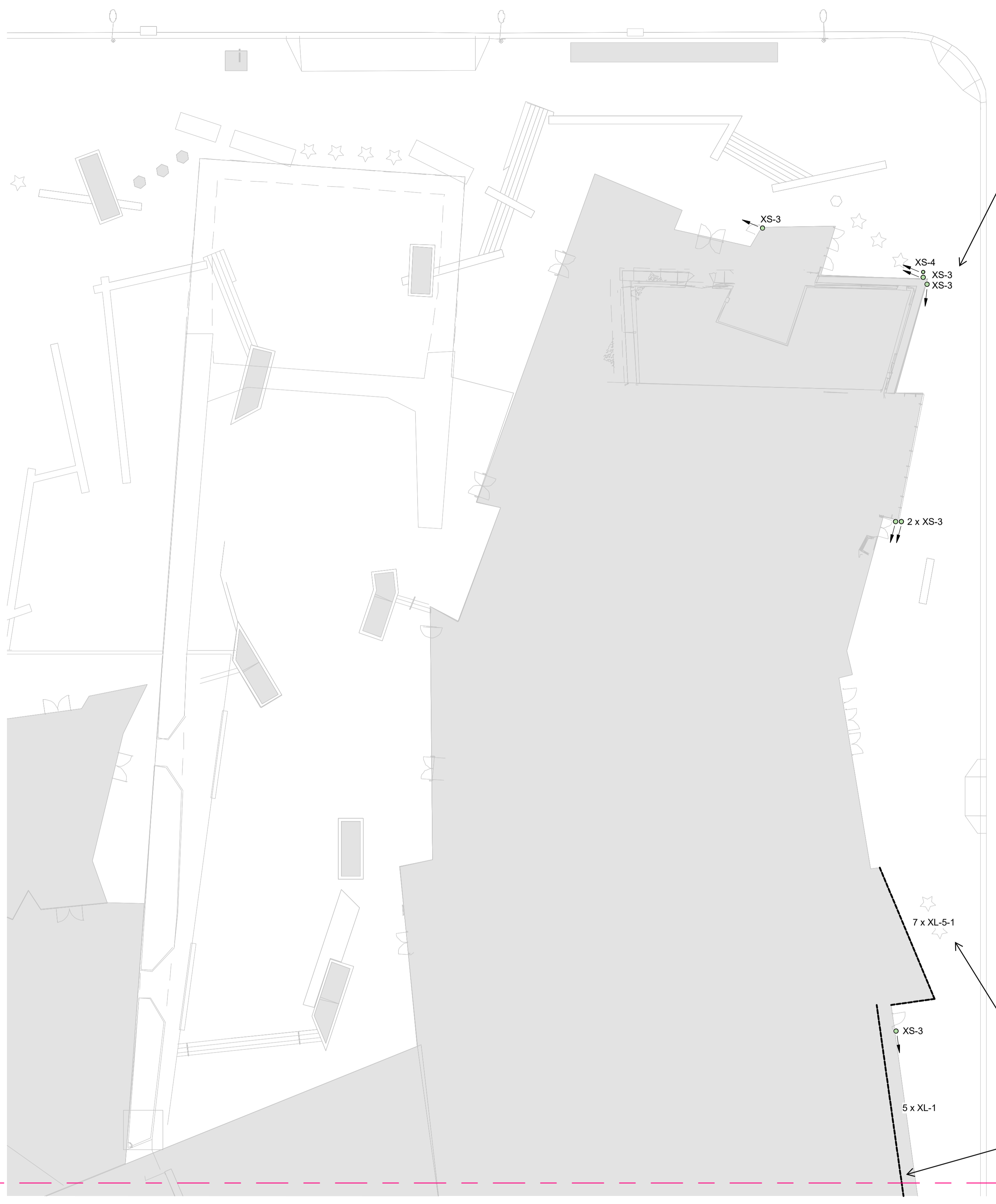
ABN: 18 000 966 165  
Sky Park, One Melbourne Quarter,  
699 Collins Street,  
Docklands VIC 3008  
ph: (03) 9668 5500  
www.arup.com

Client  
**MAP Co.**

Project Title  
**Federation Square Lighting Stage 2**

Drawing Title  
**NGV SOUTH - LOWER LEVEL - LIGHTING LAYOUT**

Scale at A1	1 : 100
Role	Specialist Lighting
Suitability	Contract Documentation
Arup Job No	299281-00
Drawing Number	L-01-002
Rev	P01



Light fixture mounted on existing outreach arm. Refer to Detail 02 for typical integration.



Figure 1.7



Figure 1.8

Linear lights XL-5-2 mounted behind the mesh. Refer to Detail 10 for typical integration. Refer to Figure 1.7 for exact quantity and location.

Linear lights XL-1 mounted behind the mesh. Refer to Detail 11 for typical integration. Refer to Figure 1.8 for exact quantity and location.

REFER TO L-01-001 FOR CONTINUATION

NGV NORTH - UPPER LEVEL FLOOR PLAN  
1:200

- Drawing Notes:
1. These drawings shall be read in conjunction with the lighting specification and luminaire schedule.
  2. All drawings in this package shall be printed in colour.
  3. If any discrepancy occurs between the lighting designer's drawing and specification, the contractor shall assume greater/larger. Any discrepancy shall be referred to the lighting designer prior to proceeding with the work.
  4. The contractor shall allow for all works to be completed in accordance with all relevant Australian Standards and Statutory Regulations and Requirements.
  5. All dimensions shown shall be verified on site, lighting designer's drawings shall not be scaled.
  6. Electrical contractor to confirm all luminaire quantities and length prior to procurement.
  7. All driver locations to be agreed with site manager and lighting designer prior to installation.

P01	05/04/24	AH	IK	TH
CONTRACT DOCUMENTATION				
Rev	Date	By	Chkd	Appd

**ARUP**  
 ABN: 18 000 966 165  
 Sky Park, One Melbourne Quarter,  
 699 Collins Street,  
 Docklands VIC 3008  
 ph: (03) 9668 5500  
 www.arup.com

Client  
**MAP Co.**

Project Title  
**Federation Square Lighting Stage 2**

Drawing Title  
**NGV NORTH - UPPER LEVEL - LIGHTING LAYOUT**

Scale at A1	1 : 200
Role	Specialist Lighting
Suitability	Contract Documentation
Arup Job No	299281-00
Drawing Number	L-01-003
Rev	P01

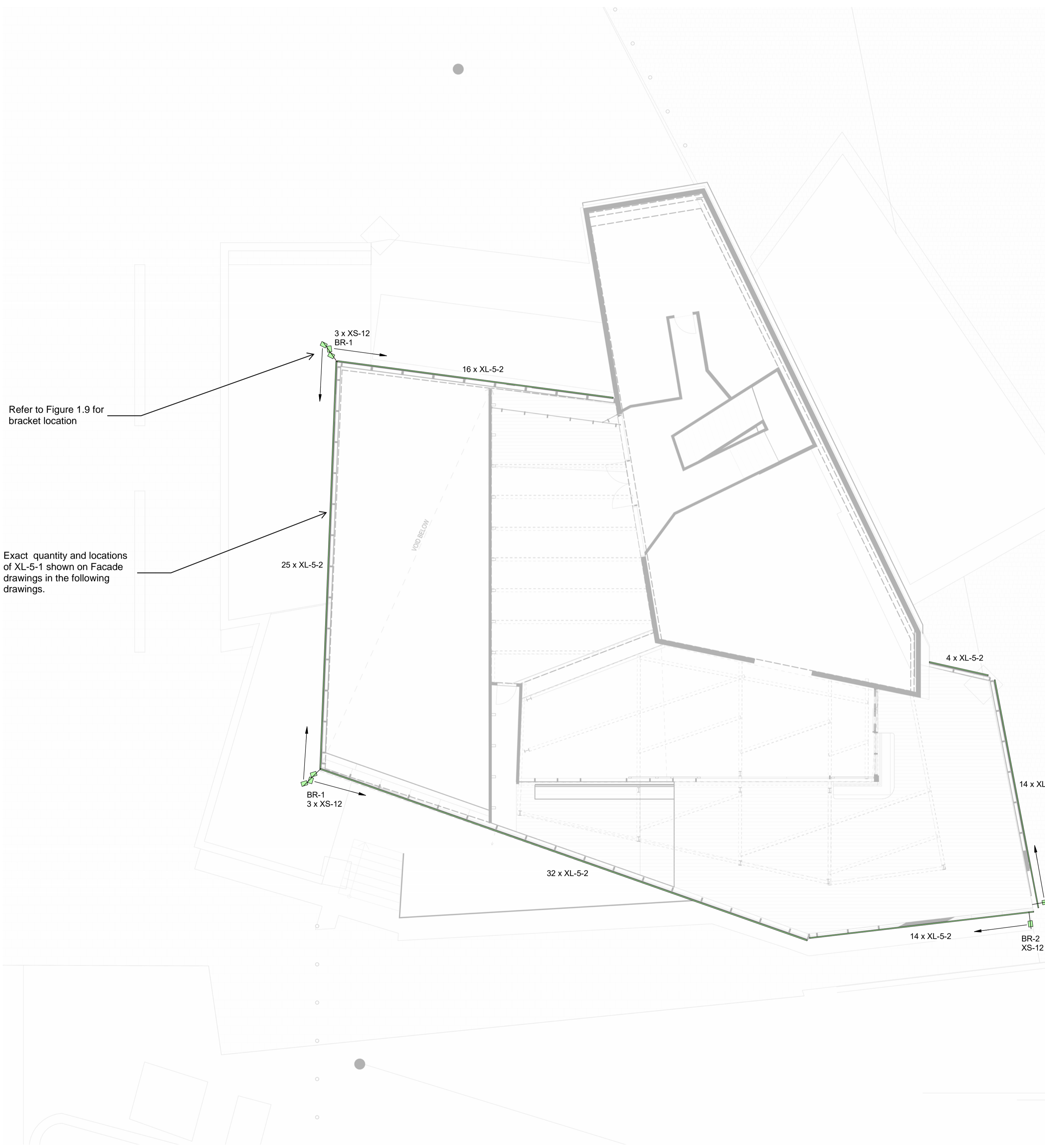


Figure 1.9

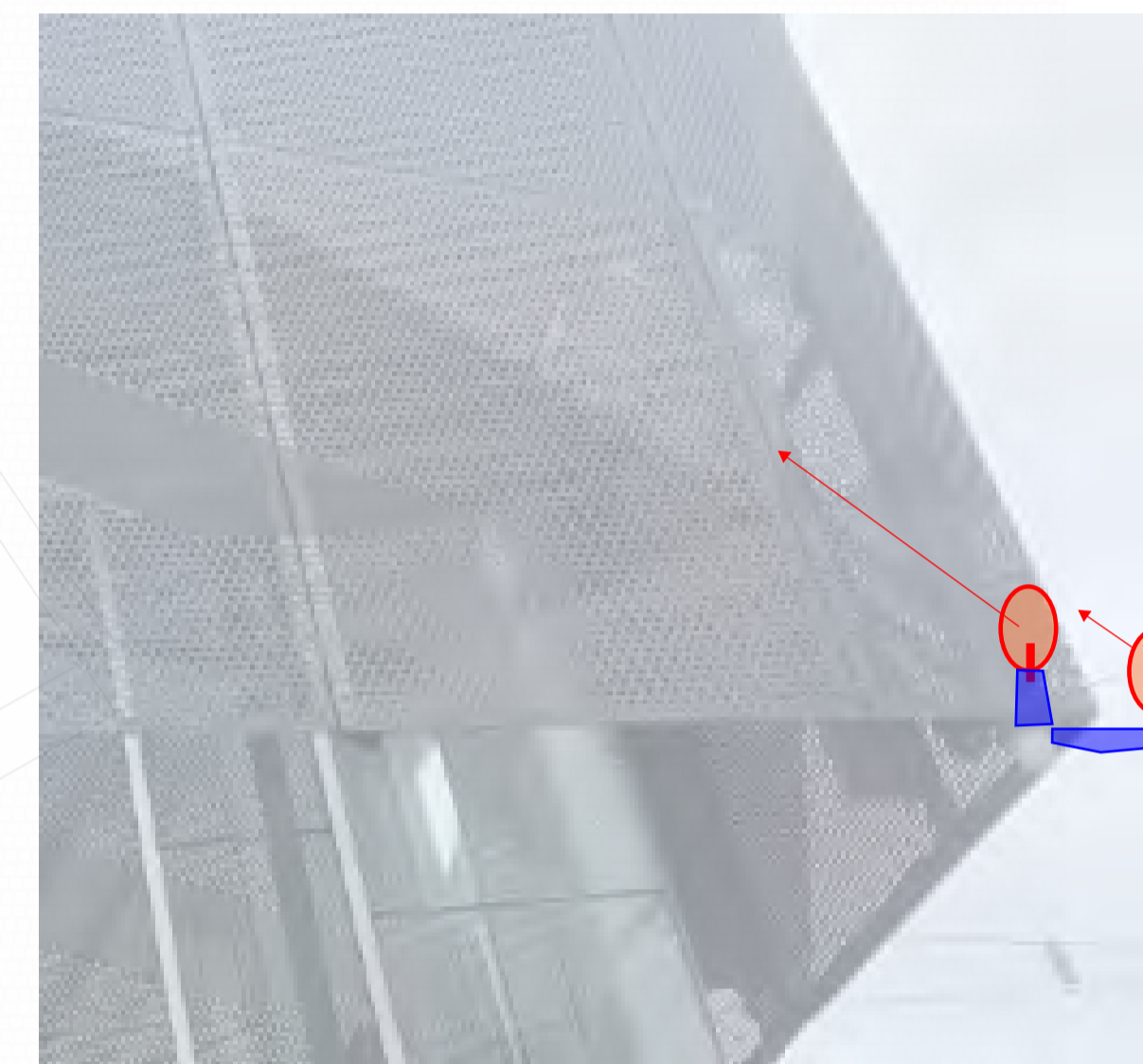


Figure 1.10

Refer to Figure 1.9 for bracket location

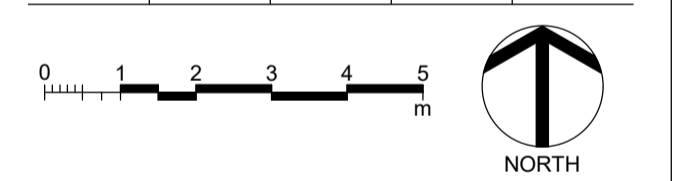
Exact quantity and locations of XL-5-1 shown on Facade drawings in the following drawings.

Existing Camera on this location to be removed during the installation and new/adjusted location coordinated with Federation Square security specialist.

Refer to Figure 1.10 for bracket location

- Drawing Notes:
1. These drawings shall be read in conjunction with the lighting specification and luminaire schedule.
  2. All drawings in this package shall be printed in colour.
  3. If any discrepancy occurs between the lighting designer's drawing and specification, the contractor shall assume greater/larger. Any discrepancy shall be referred to the lighting designer prior to proceeding with the work.
  4. The contractor shall allow for all works to be completed in accordance with all relevant Australian Standards and Statutory Regulations and Requirements.
  5. All dimensions shown shall be verified on site, lighting designer's drawings shall not be scaled.
  6. Electrical contractor to confirm all luminaire quantities and length prior to procurement.
  7. All driver locations to be agreed with site manager and lighting designer prior to installation.

P01	05/04/24	AH	IK	TH
CONTRACT DOCUMENTATION				
Rev	Date	By	Chkd	Appd



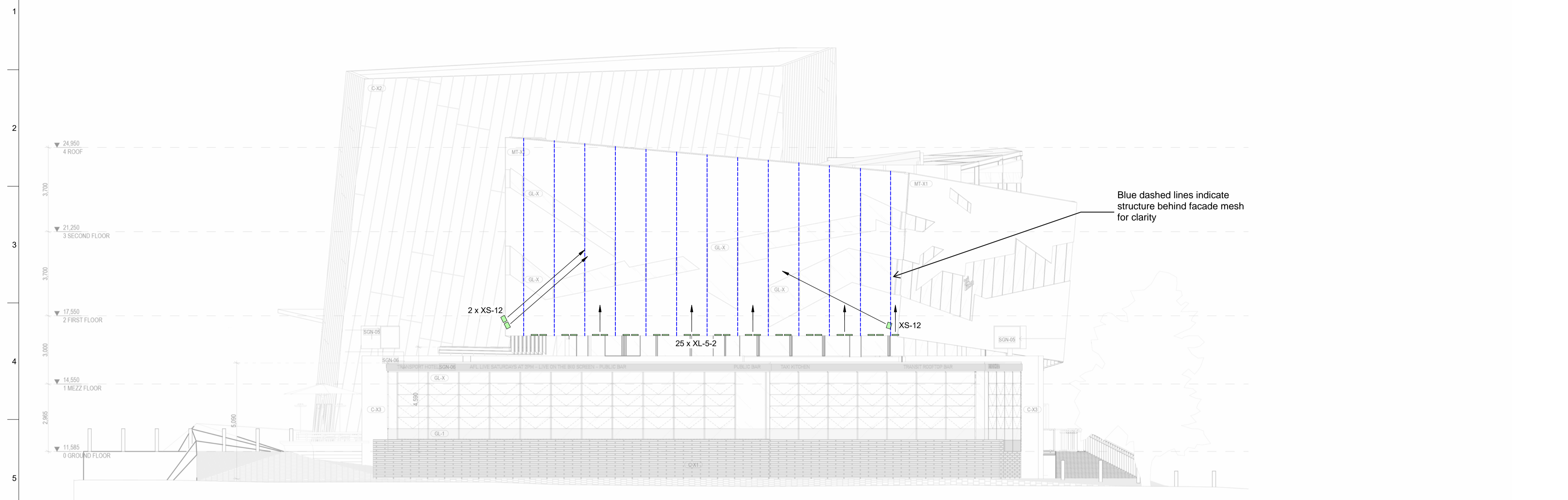
**ARUP**  
 ABN: 18 000 966 165  
 Sky Park, One Melbourne Quarter,  
 699 Collins Street,  
 Docklands VIC 3008  
 ph: (03) 9668 5500  
 www.arup.com  
 Client  
**MAP Co.**

Project Title  
**Federation Square Lighting Stage 2**

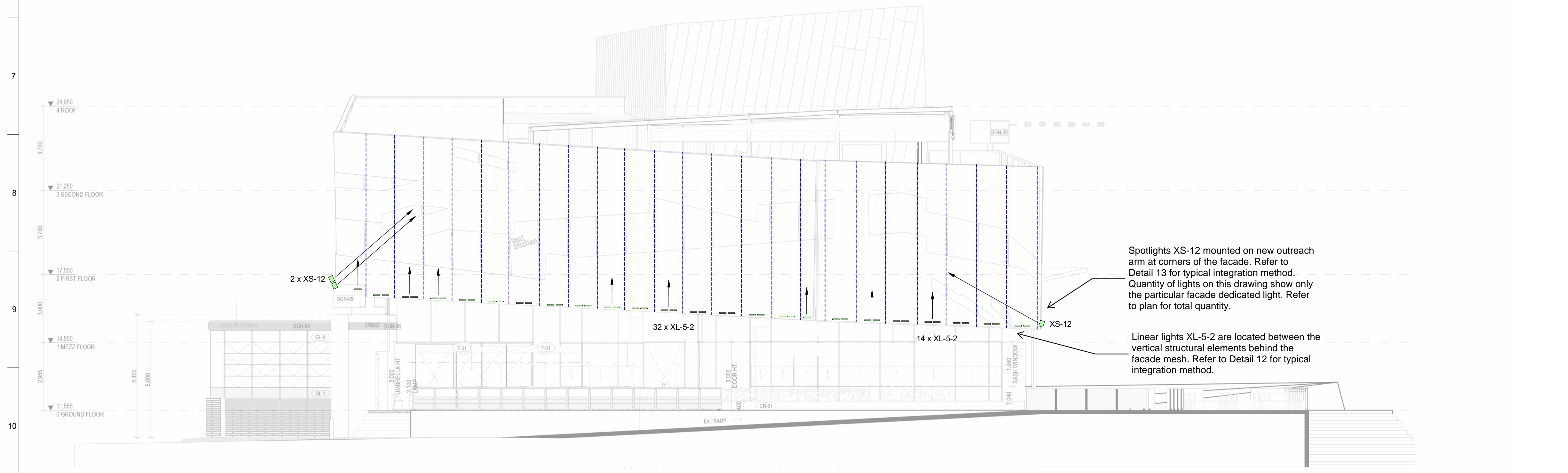
Drawing Title  
**TRANSPORT HOTEL LIGHTING LAYOUT**

Scale at A1	1 : 100
Role	Specialist Lighting
Suitability	Contract Documentation
Arup Job No	299281-00
Rev	P01
Drawing Number	L-01-004

**TRANSPORT HOTEL - FLOOR PLAN**  
 1:100



**TRANSPORT HOTEL - WEST ELEVATION**  
1:100



**TRANSPORT HOTEL - SOUTH ELEVATION**  
1:100

**ELEVATIONS** 1:100 / A1  
PROPOSAL

- Drawing Notes:
1. These drawings shall be read in conjunction with the lighting specification and luminaire schedule.
  2. All drawings in this package shall be printed in colour.
  3. If any discrepancy occurs between the lighting designer's drawing and specification, the contractor shall assume greater/larger. Any discrepancy shall be referred to the lighting designer prior to proceeding with the work.
  4. The contractor shall allow for all works to be completed in accordance with all relevant Australian Standards and Statutory Regulations and Requirements.
  5. All dimensions shown shall be verified on site, lighting designer's drawings shall not be scaled.
  6. Electrical contractor to confirm all luminaire quantities and length prior to procurement.
  7. All driver locations to be agreed with site manager and lighting designer prior to installation.
  8. Base drawings are only indicative and do not match the exact facade. Shown for information only.

P01	05/04/24	AH	IK	TH
CONTRACT DOCUMENTATION				
Rev	Date	By	Chkd	Appd

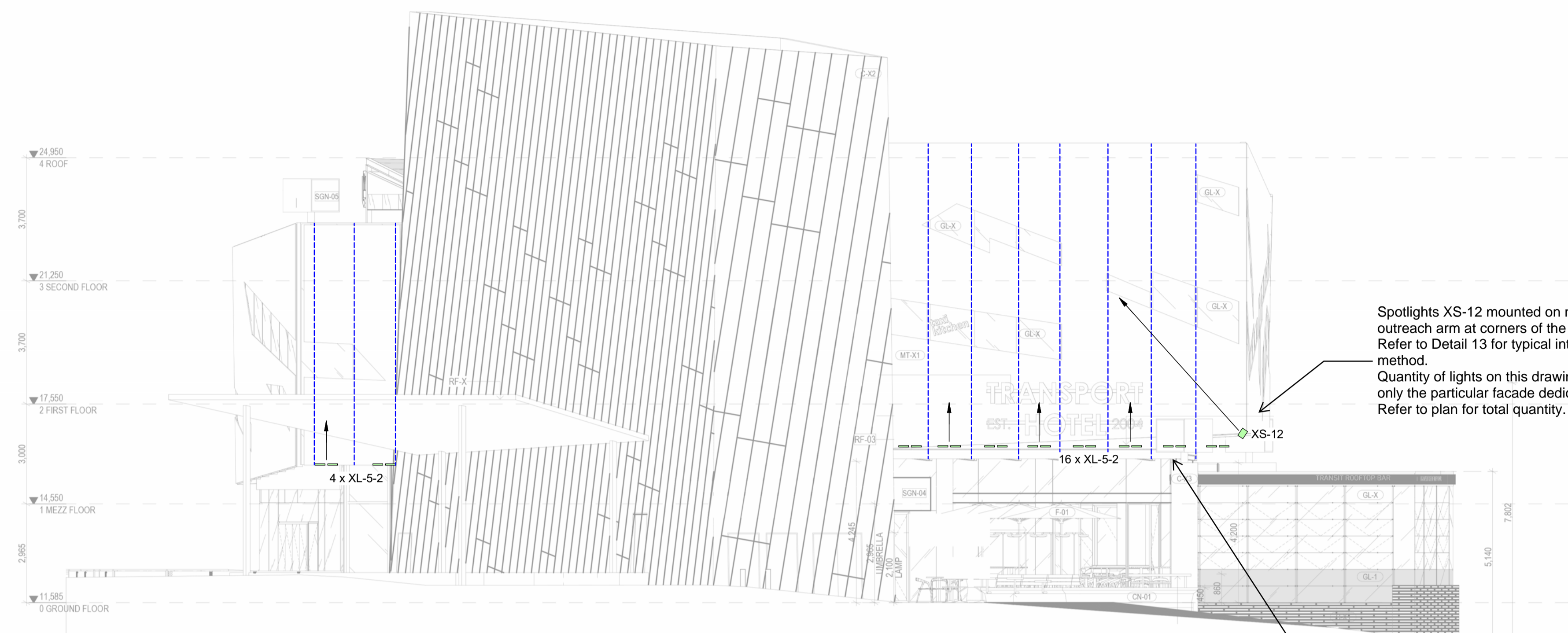
**ARUP**  
ABN: 18 000 966 165  
Sky Park, One Melbourne Quarter,  
699 Collins Street,  
Docklands VIC 3008  
ph: (03) 9668 5500  
www.arup.com  
Client  
**MAP Co.**

Project Title  
**Federation Square Lighting Stage 2**

Drawing Title  
**TRANSPORT HOTEL - FACADES 1**

Scale at A1	1 : 100
Role	Specialist Lighting
Suitability	Contract Documentation
Arup Job No	299281-00
Drawing Number	L-02-000
Rev	P01





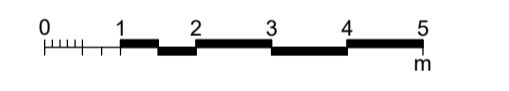
**TRANSPORT HOTEL - NORTH ELEVATION**  
1:100



**TRANSPORT HOTEL - EAST ELEVATION**  
1:100

- Drawing Notes:
1. These drawings shall be read in conjunction with the lighting specification and luminaire schedule.
  2. All drawings in this package shall be printed in colour.
  3. If any discrepancy occurs between the lighting designer's drawing and specification, the contractor shall assume greater/larger. Any discrepancy shall be referred to the lighting designer prior to proceeding with the work.
  4. The contractor shall allow for all works to be completed in accordance with all relevant Australian Standards and Statutory Regulations and Requirements.
  5. All dimensions shown shall be verified on site, lighting designer's drawings shall not be scaled.
  6. Electrical contractor to confirm all luminaire quantities and length prior to procurement.
  7. All driver locations to be agreed with site manager and lighting designer prior to installation.
  8. Base drawings are only indicative and do not match the exact facade. Shown for information only.

P01	05/04/24	AH	IK	TH
CONTRACT DOCUMENTATION				
Rev	Date	By	Chkd	Appd



**ARUP**  
 ABN: 18 000 966 165  
 Sky Park, One Melbourne Quarter,  
 699 Collins Street,  
 Docklands VIC 3008  
 ph: (03) 9668 5500  
 www.arup.com  
 Client  
**MAP Co.**

Project Title  
**Federation Square Lighting Stage 2**

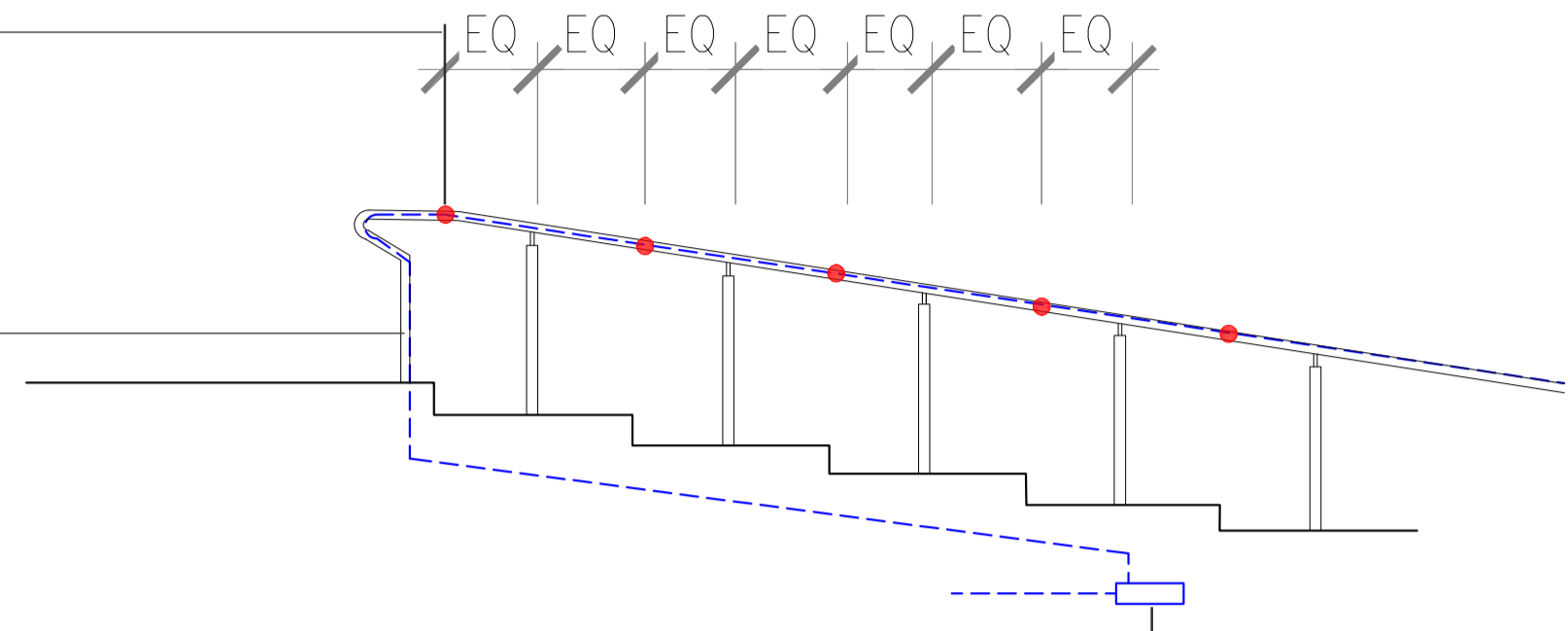
Drawing Title  
**TRANSPORT HOTEL - FACADES 2**

Scale at A1	1 : 100
Role	Specialist Lighting
Suitability	Contract Documentation
Arup Job No	299281-00
Rev	P01
Drawing Number	L-02-001

Puck lights recessed into existing handrail.

Cabling runs through the hollow section of handrail to the ground and to remote driver. Allow for removal of handrail for cabling and install of puck lights and placement back into position

Remote driver located in accessible location and cable runs further to nearest DB and control room

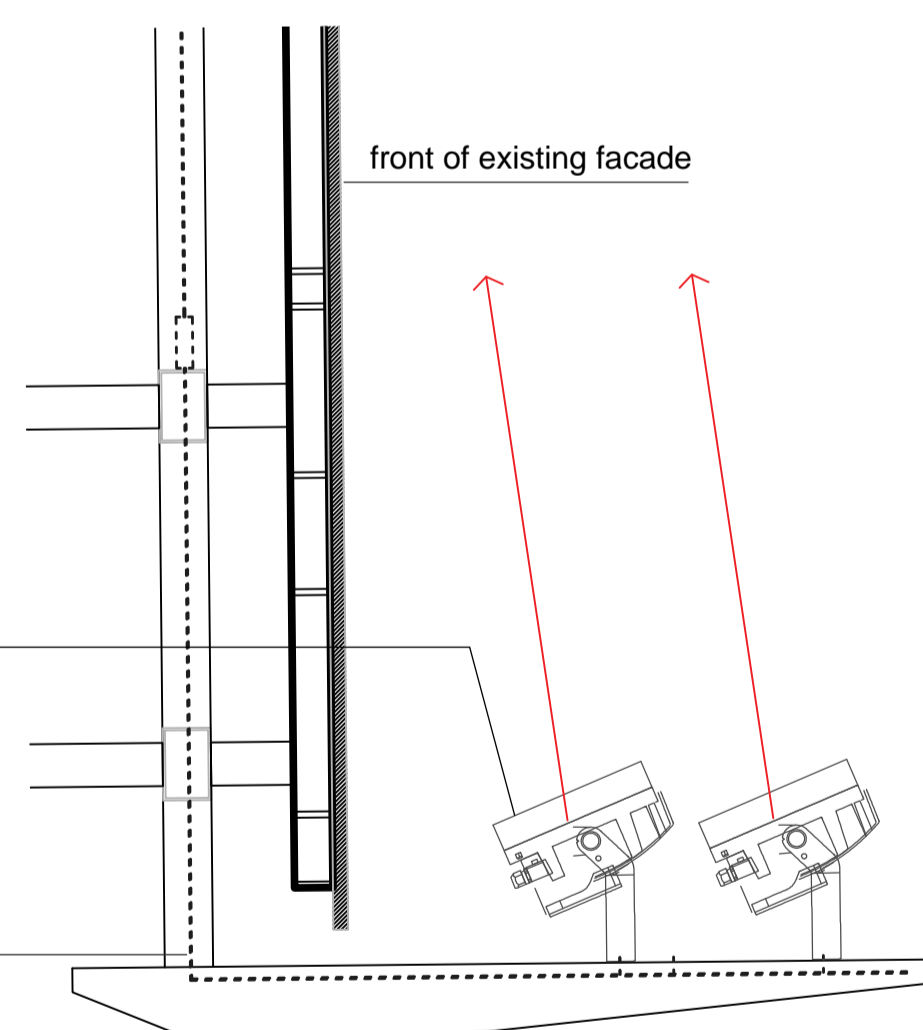


**DETAIL 01 Typical Stairs Handrail puck light**  
NTS

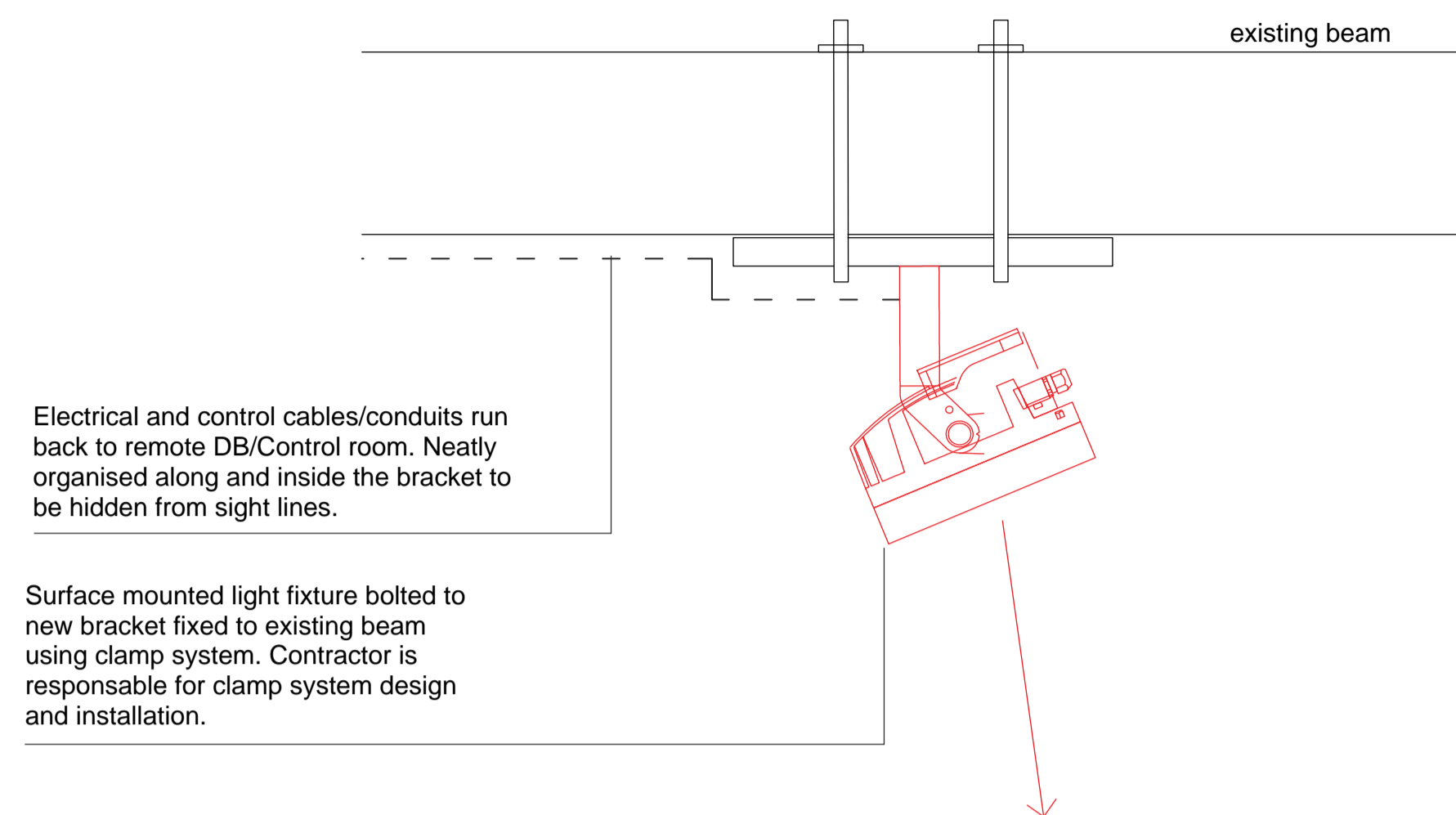


Surface mounted light fixture bolted to bracket, ensure fixtures do not obstruct each other and allow for pivot angles

Electrical and control cables/conduits run back to remote DB/Control room. Neatly organised along and inside the bracket to be hidden from sight lines.



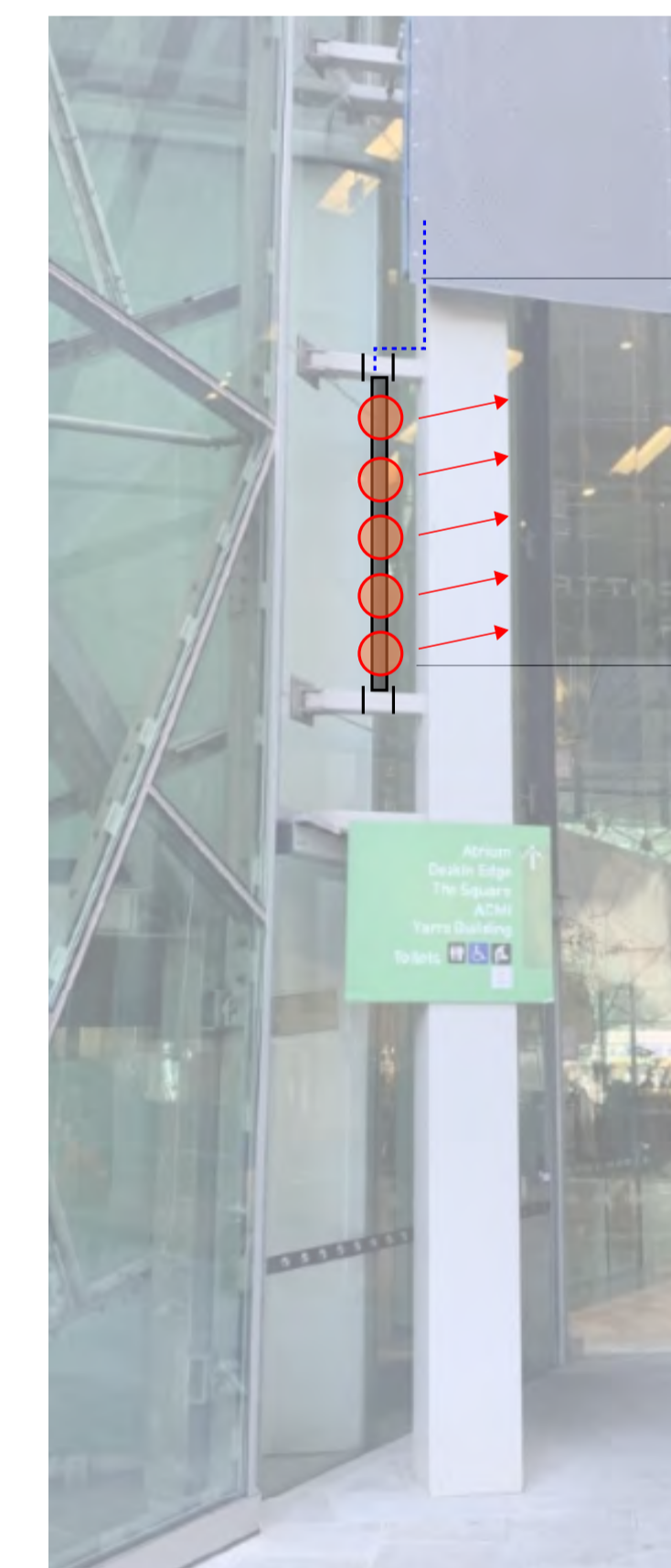
**DETAIL 02 Spotlight mounted on existing bracket**  
NTS



Electrical and control cables/conduits run back to remote DB/control room. Neatly organised along and inside the bracket to be hidden from sight lines.

Surface mounted light fixture bolted to new bracket fixed to existing beam using clamp system. Contractor is responsible for clamp system design and installation.

**DETAIL 03 Spotlight mounted on existing structure**  
NTS



Electrical and Control cabling neatly organised away from sight lines along existing facade elements. Finish to match the facade elements.

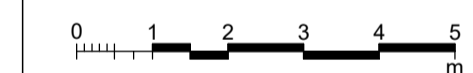
Surface mounted light fixture bolted to new bracket fixed between existing Facade braces. Use clamp system to mount the bracket. Contractor is responsible for fabrication for steel support structure.

**DETAIL 04 Spotlight mounted on existing structure**  
NTS

**Drawing Notes:**

1. These drawings shall be read in conjunction with the lighting specification and luminaire schedule.
2. All drawings in this package shall be printed in colour.
3. If any discrepancy occurs between the lighting designer's drawing and specification, the contractor shall assume greater/larger. Any discrepancy shall be referred to the lighting designer prior to proceeding with the work.
4. The contractor shall allow for all works to be completed in accordance with all relevant Australian Standards and Statutory Regulations and Requirements.
5. All dimensions shown shall be verified on site, lighting designer's drawings shall not be scaled.
6. Electrical contractor to confirm all luminaire quantities and length prior to procurement.
7. All driver locations to be agreed with site manager and lighting designer prior to installation.
8. Electrical contractor to assess the site conditions and propose the appropriate detailed fixing methods for the various luminaires. Review shop drawings or mounting method with site manager and lighting designer prior to procurement.

P01	05/04/24	AH	IK	TH
CONTRACT DOCUMENTATION				
Rev	Date	By	Chkd	Appd



**ARUP**

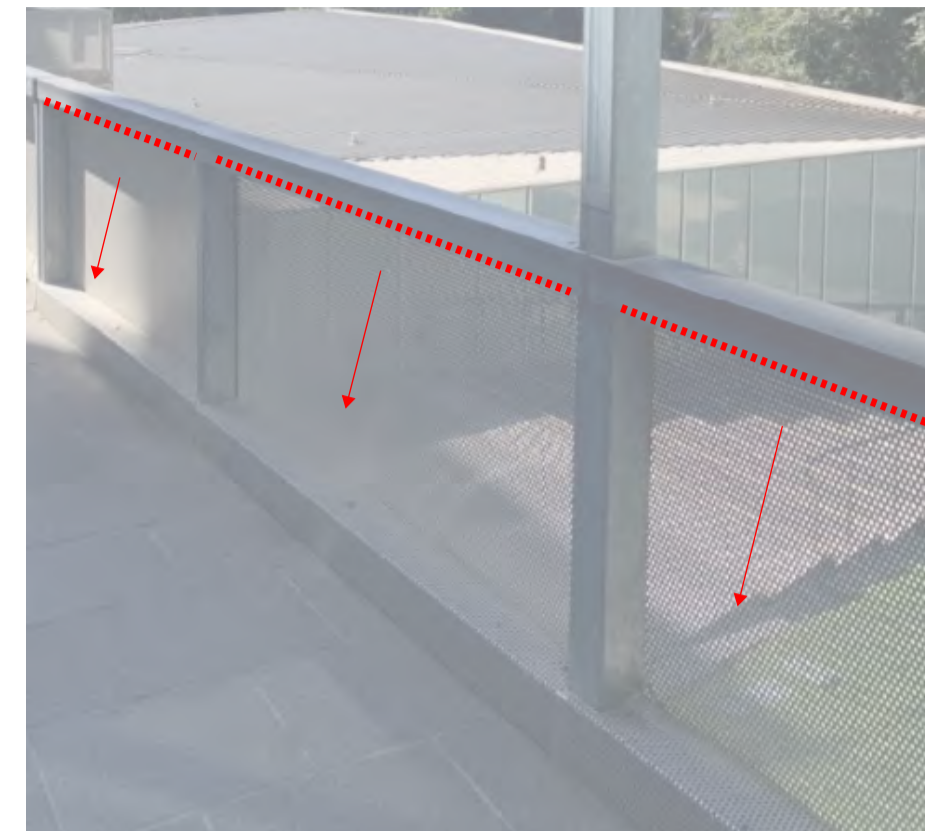
ABN: 18 000 966 165  
Sky Park, One Melbourne Quarter,  
699 Collins Street,  
Docklands VIC 3008  
ph: (03) 9668 5500  
www.arup.com

Client  
**MAP Co.**

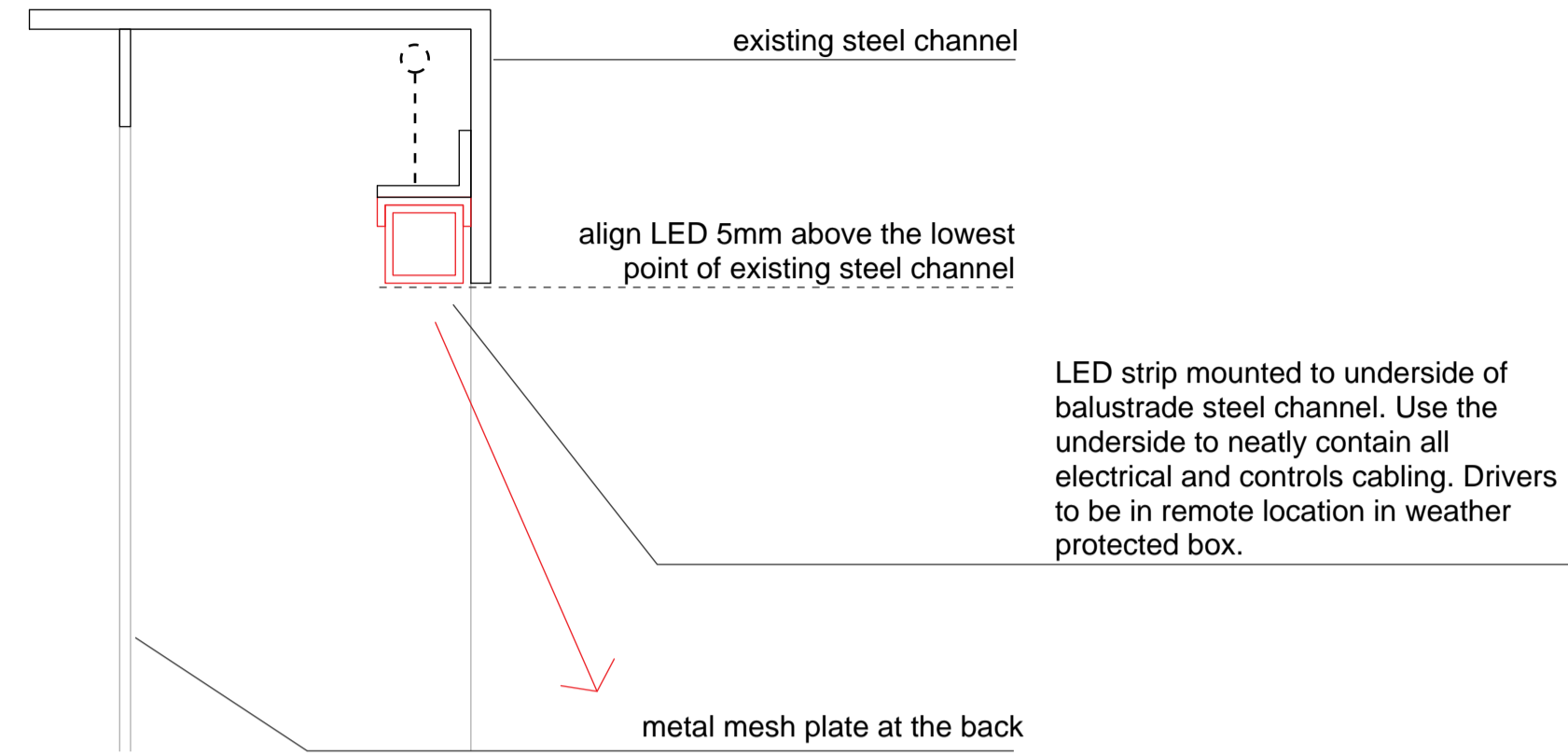
Project Title  
**Federation Square Lighting Stage 2**

Drawing Title  
**DETAILS 1**

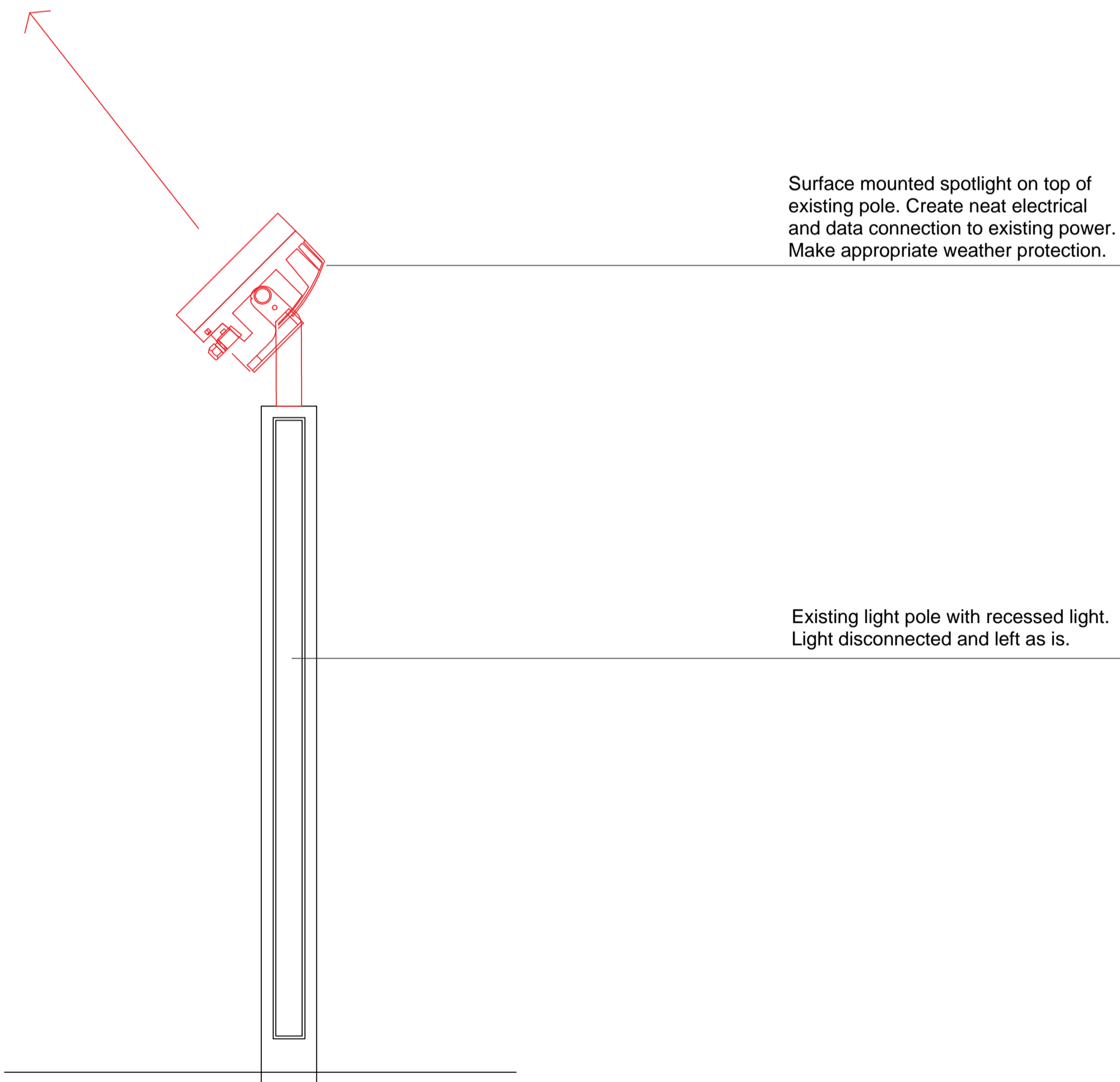
Scale at A1	
Role	Specialist Lighting
Suitability	Contract Documentation
Arup Job No <b>299281-00</b>	Rev <b>P01</b>
Drawing Number <b>L-03-001</b>	



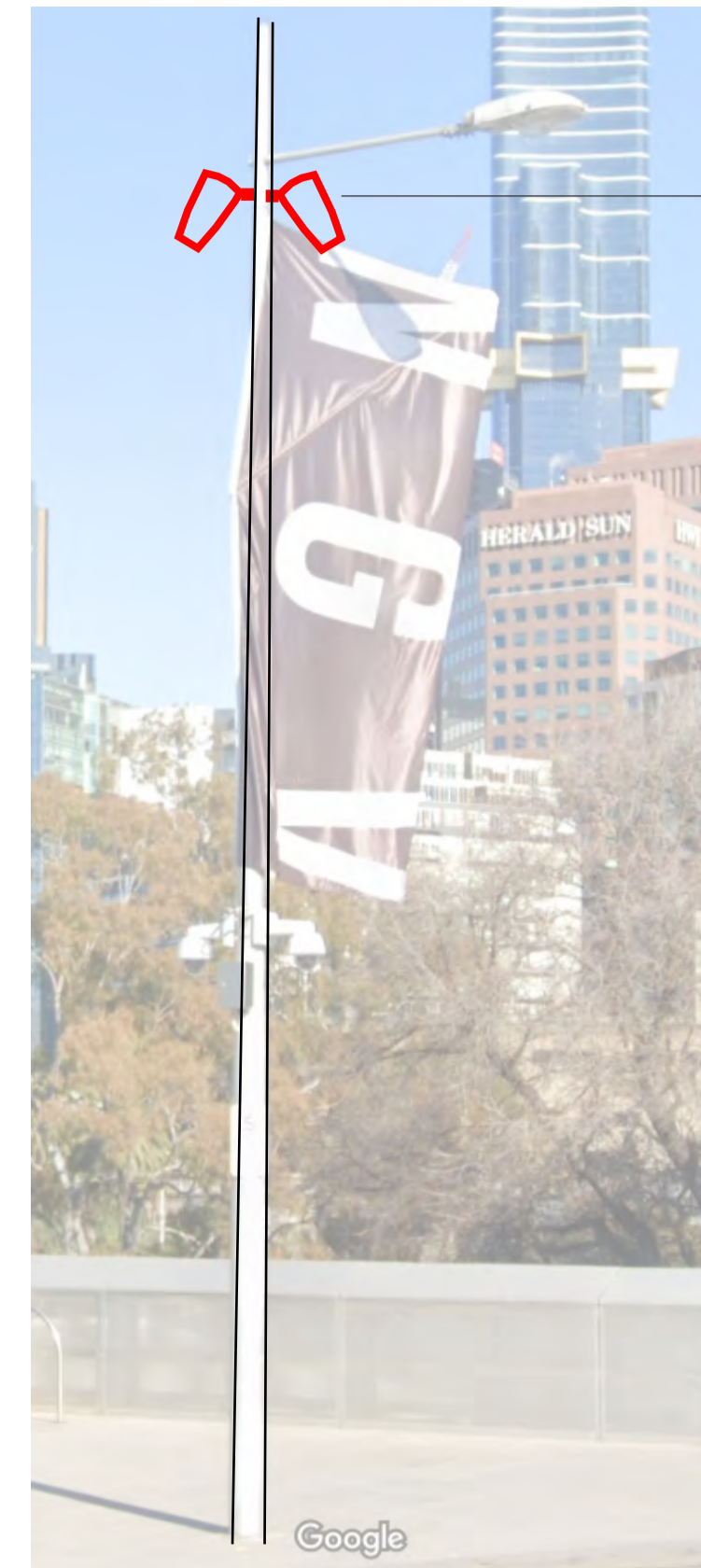
indicative LED strip location under steel channel of balustrade



**DETAIL 06 Linear light into balustrade**  
NTS

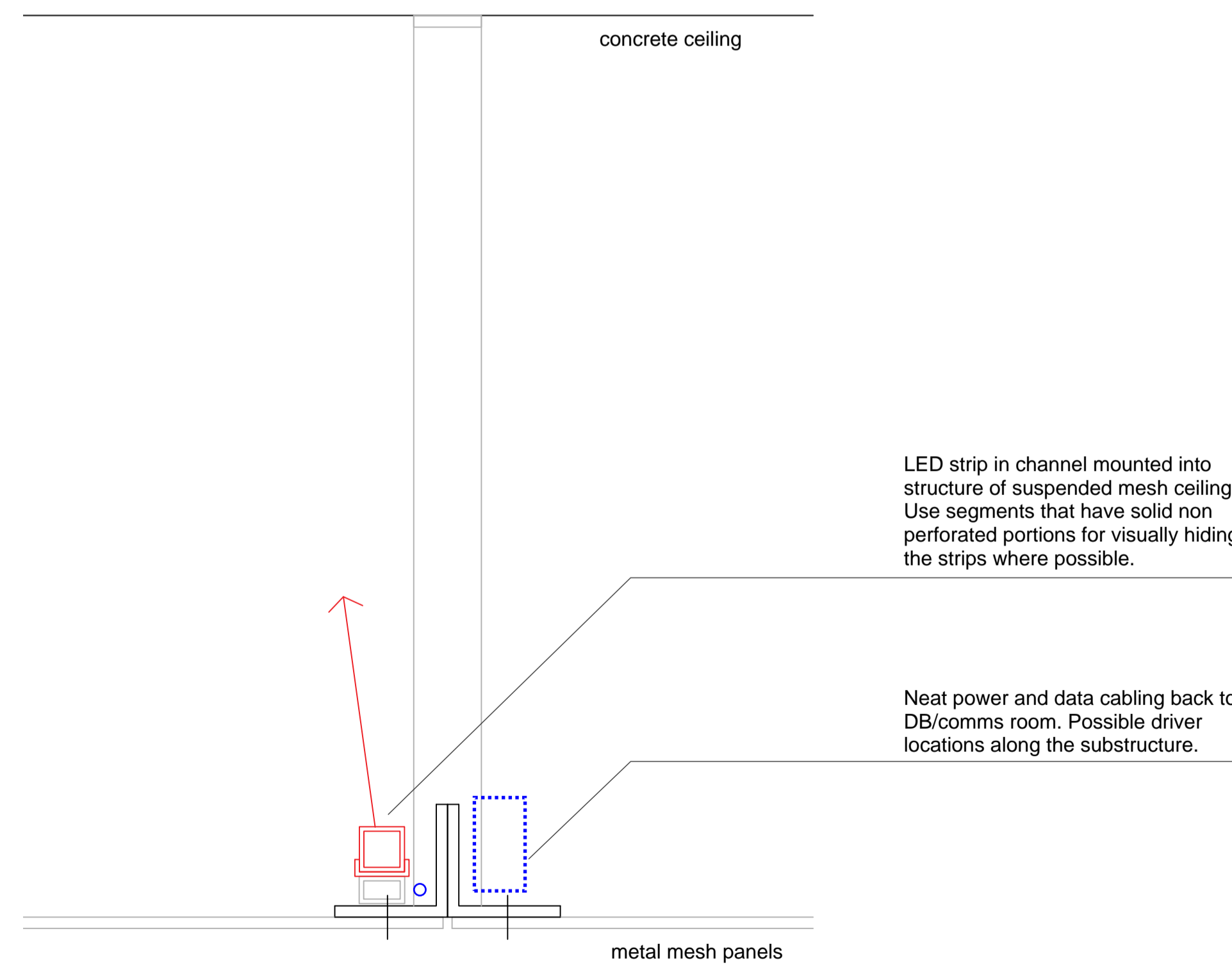


**DETAIL 07 Typical Stairs Handrail puck light**  
NTS



Gobo spotlights mounted on existing pole at same height. Review existing flag pole fixing to avoid flag moving in the way of lights. Contractor to review light fixture connector size and shape to match existing pole. Confirm exact angle position prior to install via shop drawings.

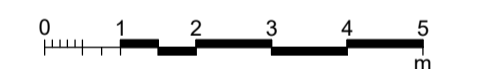
**DETAIL 08 Spotlight mounted on existing pole**  
NTS



**DETAIL 09 Linear uplight from mesh ceiling**  
NTS

- Drawing Notes:
1. These drawings shall be read in conjunction with the lighting specification and luminaire schedule.
  2. All drawings in this package shall be printed in colour.
  3. If any discrepancy occurs between the lighting designer's drawing and specification, the contractor shall assume greater/larger. Any discrepancy shall be referred to the lighting designer prior to proceeding with the work.
  4. The contractor shall allow for all works to be completed in accordance with all relevant Australian Standards and Statutory Regulations and Requirements.
  5. All dimensions shown shall be verified on site, lighting designer's drawings shall not be scaled.
  6. Electrical contractor to confirm all luminaire quantities and length prior to procurement.
  7. All driver locations to be agreed with site manager and lighting designer prior to installation.
  8. Electrical contractor to assess the site conditions and propose the appropriate detailed fixing methods for the various luminaires. Review shop drawings or mounting method with site manager and lighting designer prior to procurement.

P01	05/04/24	AH	IK	TH
CONTRACT DOCUMENTATION				
Rev	Date	By	Chkd	Appd



**ARUP**

ABN: 18 000 966 165  
Sky Park, One Melbourne Quarter,  
699 Collins Street,  
Docklands VIC 3008  
ph: (03) 9668 5500  
www.arup.com

Client  
**MAP Co.**

Project Title  
**Federation Square Lighting Stage 2**

Drawing Title  
**DETAILS 2**

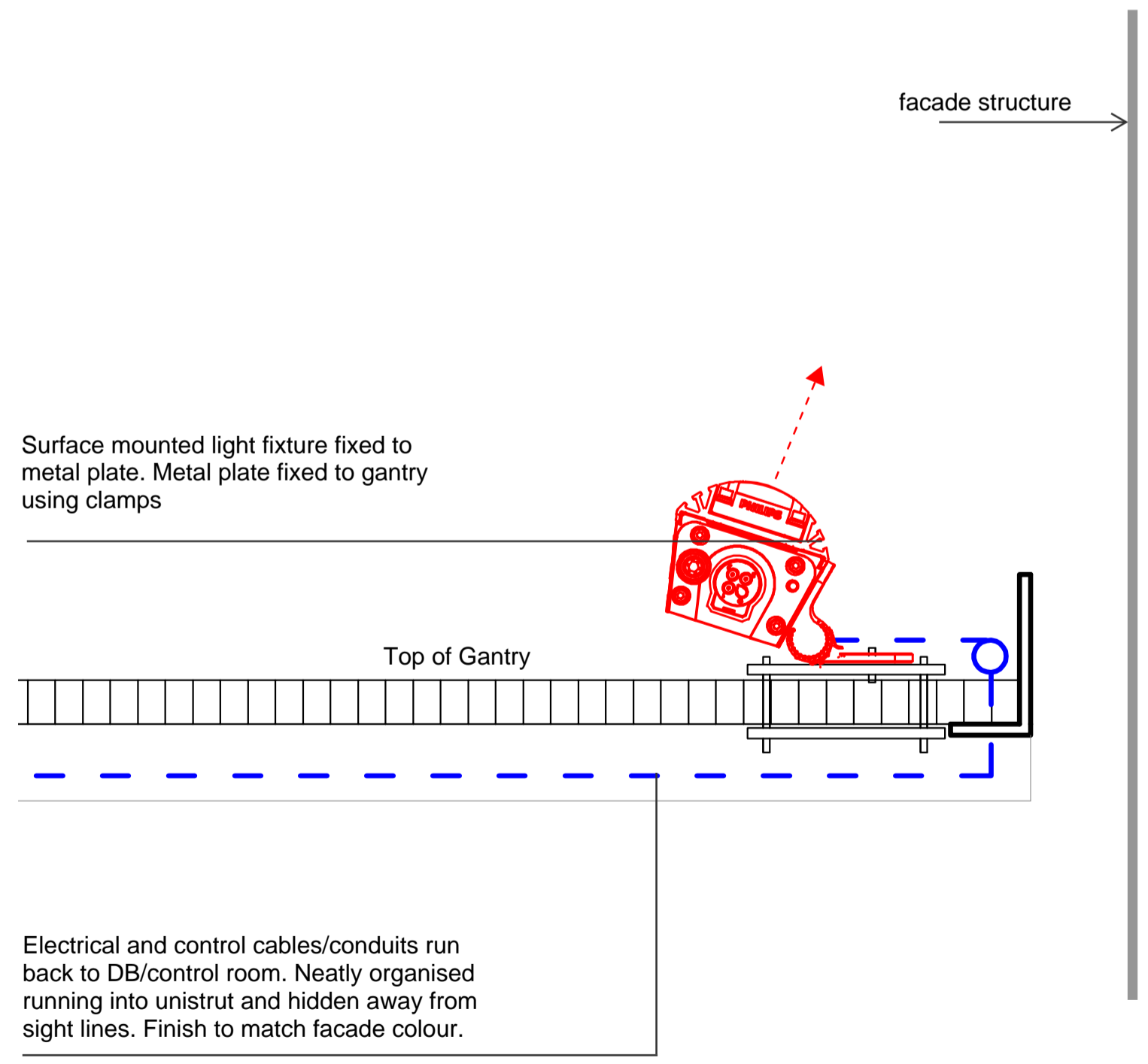
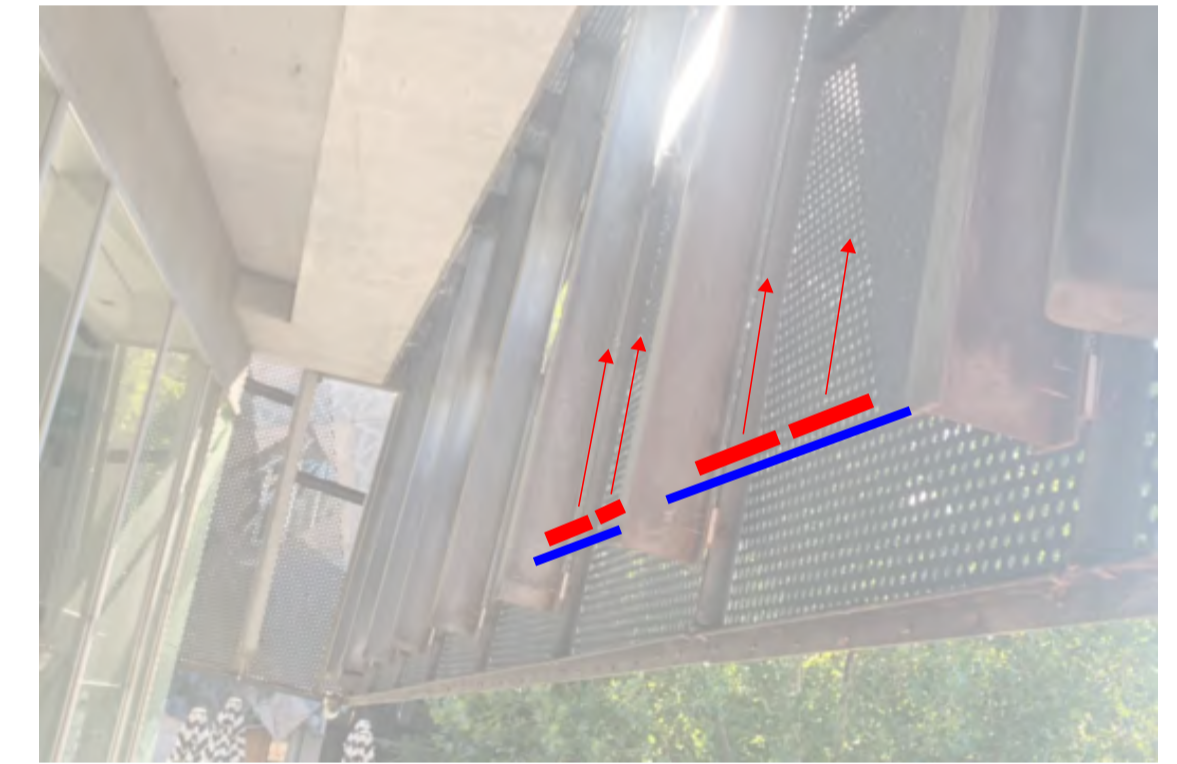
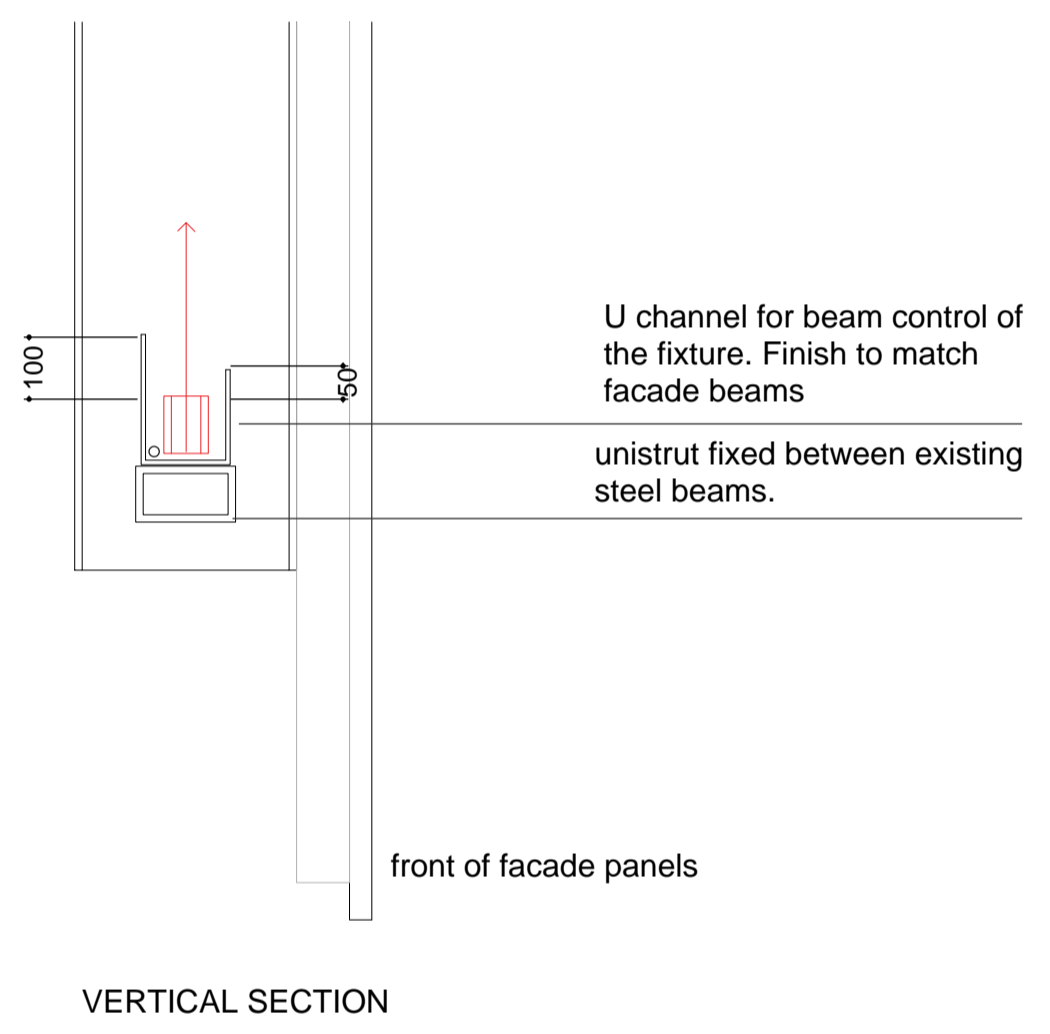
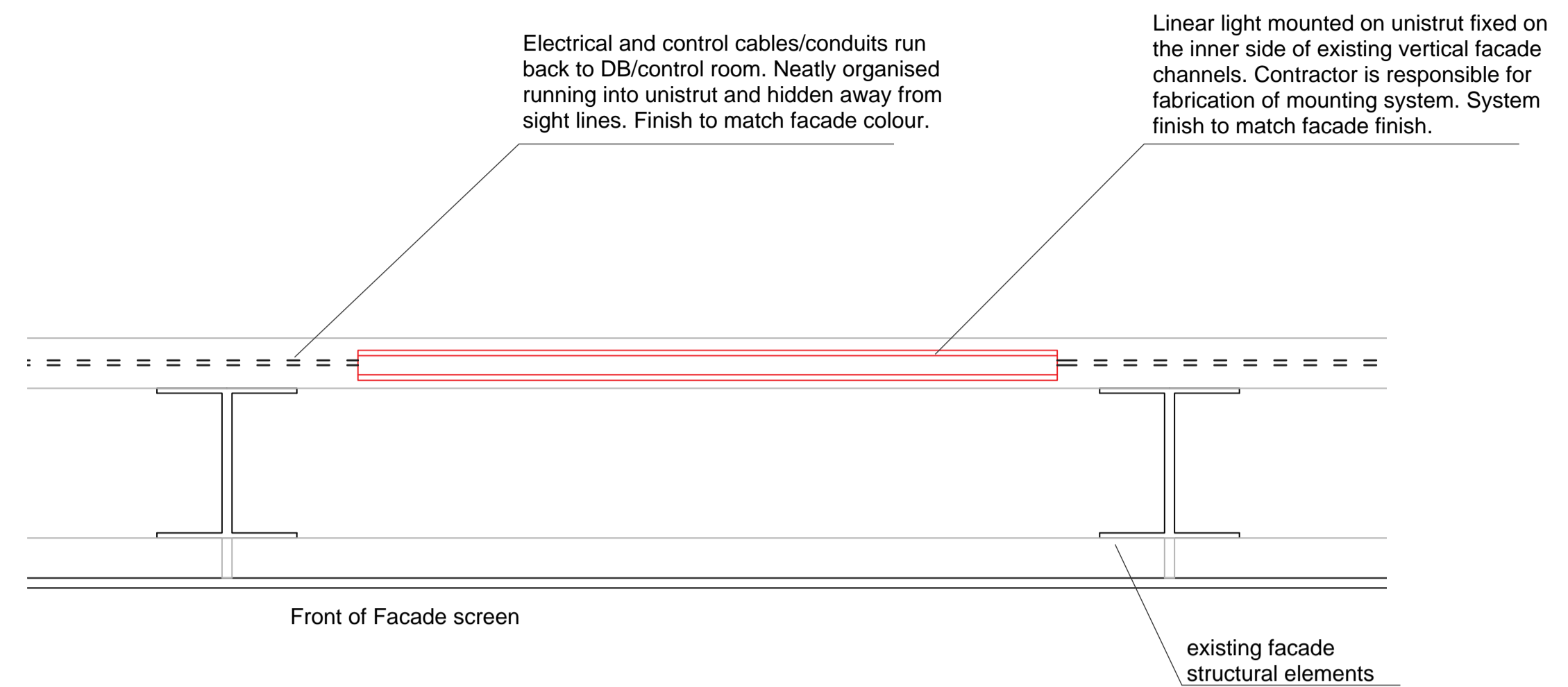
Scale at A1  
Role Specialist Lighting  
Suitability Contract Documentation

Arup Job No <b>299281-00</b>	Rev <b>P01</b>
Drawing Number <b>L-03-002</b>	

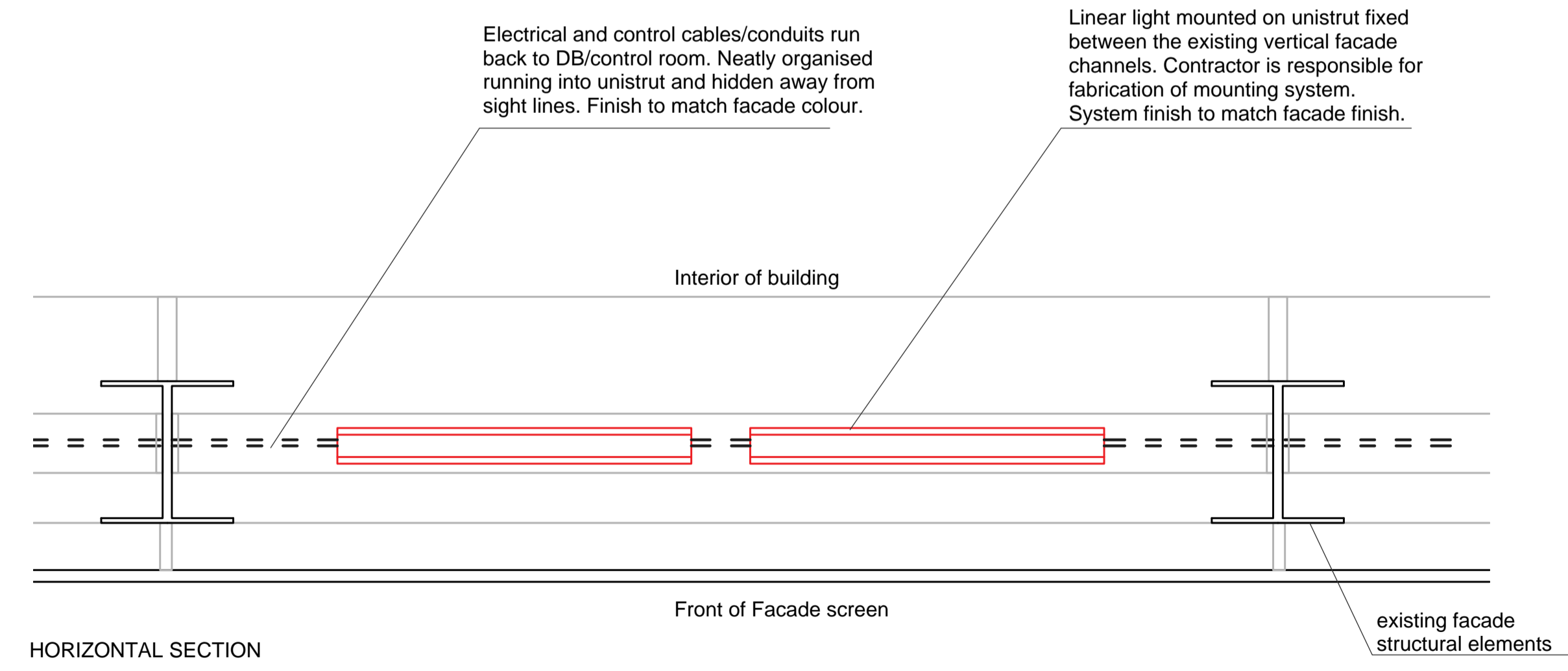
A1  
1  
2  
3  
4  
5  
6  
7  
8  
9  
10  
11



**DETAIL 10 Linear light to back of the screen**  
NTS



**DETAIL 11 Linear light to back of facade**  
NTS



**DETAIL 12 Linear light to back of the screen**  
NTS

- Drawing Notes:
1. These drawings shall be read in conjunction with the lighting specification and luminaire schedule.
  2. All drawings in this package shall be printed in colour.
  3. If any discrepancy occurs between the lighting designer's drawing and specification, the contractor shall assume greater/larger. Any discrepancy shall be referred to the lighting designer prior to proceeding with the work.
  4. The contractor shall allow for all works to be completed in accordance with all relevant Australian Standards and Statutory Regulations and Requirements.
  5. All dimensions shown shall be verified on site, lighting designer's drawings shall not be scaled.
  6. Electrical contractor to confirm all luminaire quantities and length prior to procurement.
  7. All driver locations to be agreed with site manager and lighting designer prior to installation.
  8. Electrical contractor to assess the site conditions and propose the appropriate detailed fixing methods for the various luminaires. Review shop drawings or mounting method with site manager and lighting designer prior to procurement.

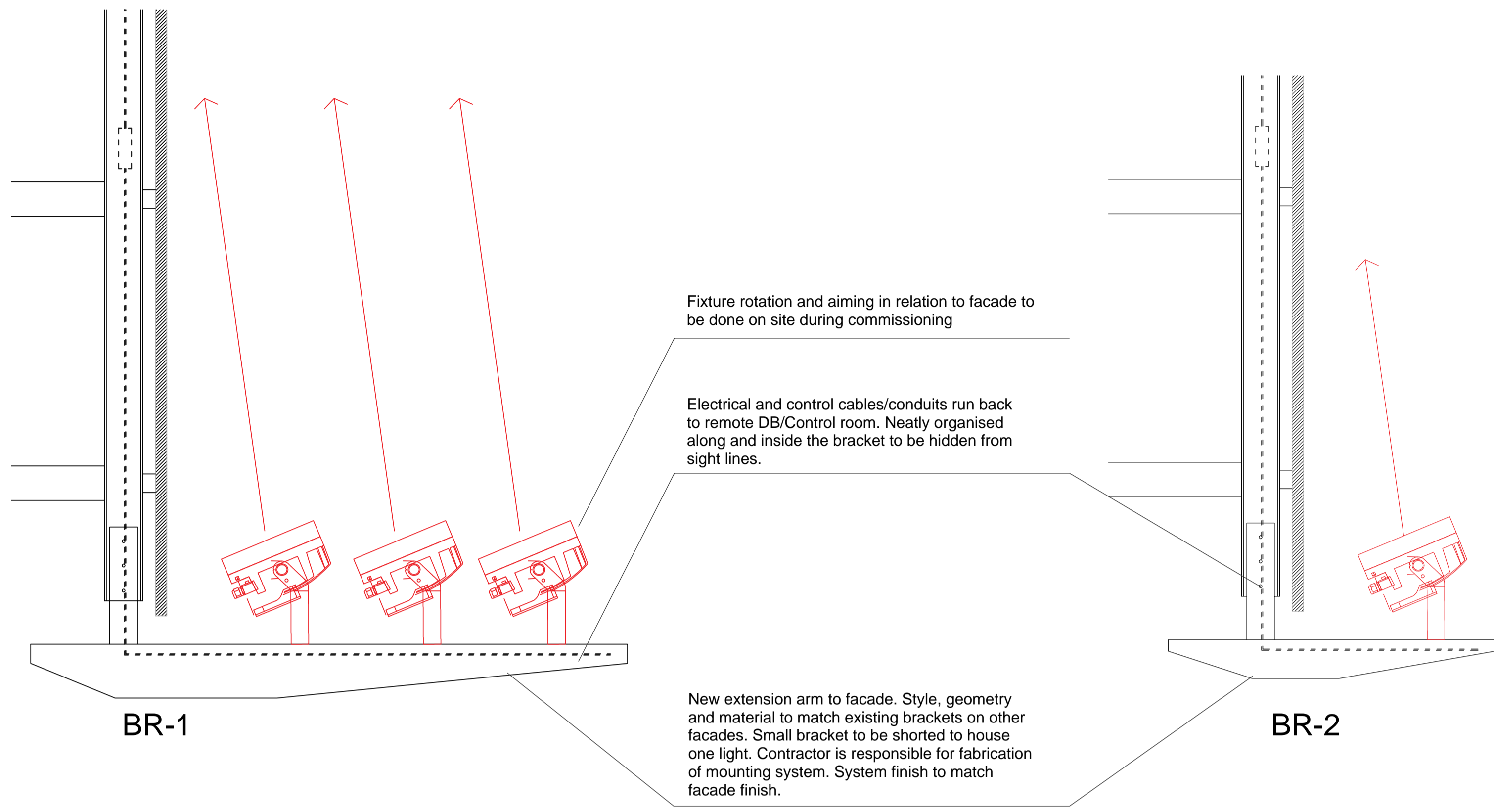
P01	05/04/24	AH	IK	TH
CONTRACT DOCUMENTATION				
Rev	Date	By	Chkd	Appd

**ARUP**  
 ABN: 18 000 966 165  
 Sky Park, One Melbourne Quarter,  
 699 Collins Street,  
 Docklands VIC 3008  
 ph: (03) 9668 5500  
 www.arup.com  
 Client  
**MAP Co.**

Project Title  
**Federation Square Lighting Stage 2**

Drawing Title  
**DETAILS 3**

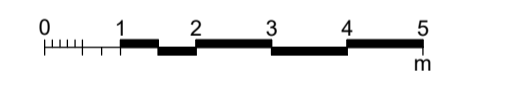
Scale at A1	
Role	Specialist Lighting
Suitability	Contract Documentation
Arup Job No	Rev
<b>299281-00</b>	<b>P01</b>
Drawing Number	
<b>L-03-003</b>	



**DETAIL 13 Spotlights mounted on an arm**  
NTS

- Drawing Notes:
1. These drawings shall be read in conjunction with the lighting specification and luminaire schedule.
  2. All drawings in this package shall be printed in colour.
  3. If any discrepancy occurs between the lighting designer's drawing and specification, the contractor shall assume greater/larger. Any discrepancy shall be referred to the lighting designer prior to proceeding with the work.
  4. The contractor shall allow for all works to be completed in accordance with all relevant Australian Standards and Statutory Regulations and Requirements.
  5. All dimensions shown shall be verified on site, lighting designer's drawings shall not be scaled.
  6. Electrical contractor to confirm all luminaire quantities and length prior to procurement.
  7. All driver locations to be agreed with site manager and lighting designer prior to installation.
  8. Electrical contractor to assess the site conditions and propose the appropriate detailed fixing methods for the various luminaires. Review shop drawings or mounting method with site manager and lighting designer prior to procurement.

P01	05/04/24	AH	IK	TH
CONTRACT DOCUMENTATION				
Rev	Date	By	Chkd	Appd



**ARUP**  
 ABN: 18 000 966 165  
 Sky Park, One Melbourne Quarter,  
 699 Collins Street,  
 Docklands VIC 3008  
 ph: (03) 9668 5500  
 www.arup.com  
 Client  
**MAP Co.**

Project Title  
**Federation Square Lighting Stage 2**

Drawing Title  
**DETAILS 4**

Scale at A1

Role **Specialist Lighting**

Suitability **Contract Documentation**

Arup Job No <b>299281-00</b>	Rev <b>P01</b>
Drawing Number <b>L-03-004</b>	