

ROYAL EXHIBITION BUILDING

HOCHGÜRTEL FOUNTAIN

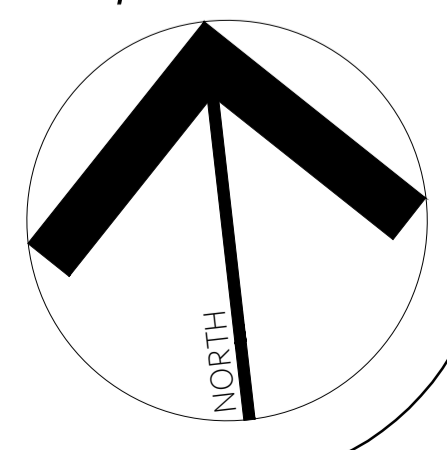
NORTH-EAST LAKE

SOUTH-WEST LAKE

VICTORIA PARADE

Carlton Gardens Tree Replacement Strategy

1 - EXISTING AVENUES & LAWNS - CARLTON GARDENS SOUTH Scale 1:500 @ A1 / 1:1000 @ A3



**LEGEND**  
 LP Lawn Planting Areas  
 Avenues and Lawn Planting Area numbers as per Meredith Gould Architects Pty Ltd in association with Contour Design Aust Pty Ltd (2006) "Carlton Gardens Trees - Conservation Strategy"

Major views across Gardens  
 City of Melbourne, Carlton Gardens Master Plan 2022, pg 11

Produced by andrea proctor landscapes for City of Melbourne  
 Copyright may 2024



CARLTON STREET

CURATOR'S LODGE

LP 13

LP 13

AVENUE 8: ELMS

AVENUE 8: ELMS

LP 16

LP 19

AVENUE 11: ELMS

AVENUE 9: POPLARS

AVENUE 12: PLANES

AVENUE 10: OAKS

LP 20

LP 14

AVENUE 13: ELMS

LP 18

AVENUE 11: ELMS

AVENUE 10: OAKS

AVENUE 12: PLANES

TENNIS COURTS

RATHDOWNE STREET

LP 12

PLAYGROUND

BASKETBALL COURT

LP 21

AVENUE 9: POPLARS

LP 17

AVENUE 10: OAKS

AVENUE 11: ELMS

NICHOLSON STREET

MELBOURNE MUSEUM

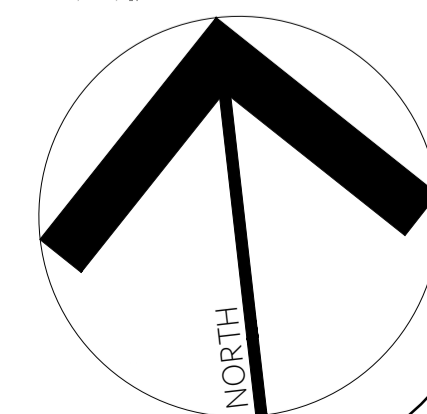
LP 15

Extent of Works

Extent of Works

### Carlton Gardens Tree Replacement Strategy

2 - EXISTING AVENUES & LAWNS - CARLTON GARDENS NORTH Scale 1:500 @ A1 / 1:1000 @ A3



**LEGEND**  
 LP Lawn Planting Areas  
 Avenues and Lawn Planting Area numbers as per Meredith Gould Architects Pty Ltd in association with Contour Design Aust Pty Ltd (2006) "Carlton Gardens Trees - Conservation Strategy"



ROYAL EXHIBITION BUILDING

PARTERRES

PARTERRES

HOCHGÜRTEL FOUNTAIN

PARTERRE

NORTH-EAST LAKE

SOUTH-WEST LAKE

RATHDOWNE STREET

NICHOLSON STREET

VICTORIA PARADE

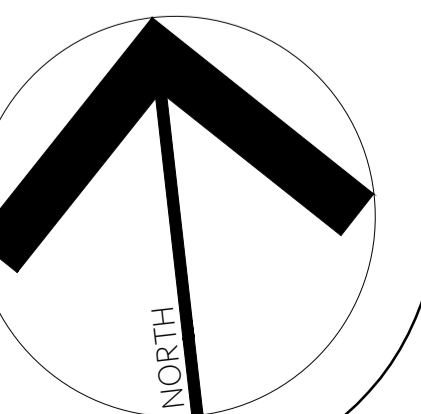
### Carlton Gardens Tree Replacement Strategy

LEGEND

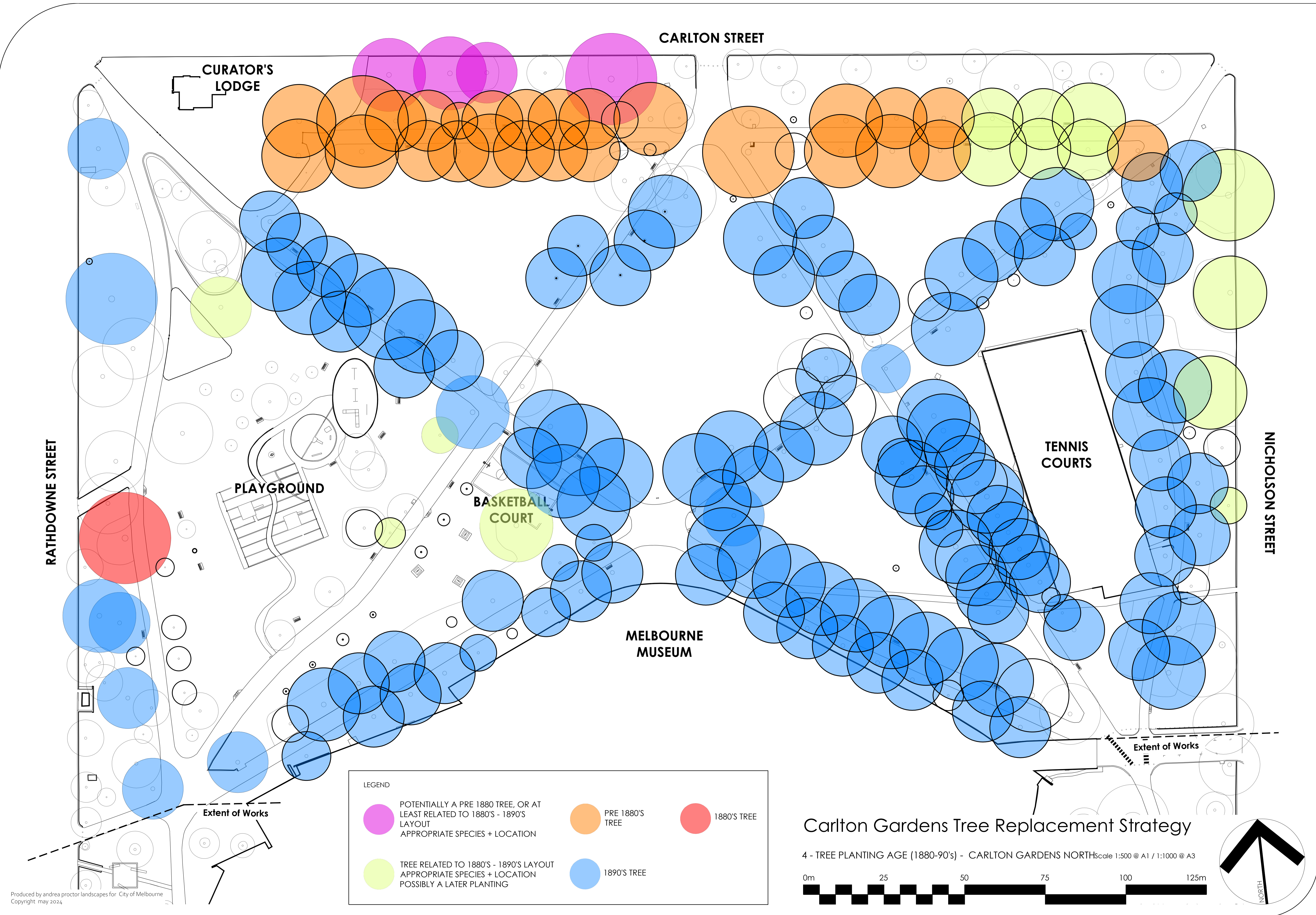
1880'S TREE

TREE RELATED TO 1880'S - 1890'S LAYOUT  
APPROPRIATE SPECIES + LOCATION  
POSSIBLY A LATER PLANTING

3 - TREE PLANTING / AGE (1880's) - CARLTON GARDENS SOUTH Scale 1:500 @ A1 / 1:1000 @ A3







RATHDOWNE STREET

CARLTON STREET

CURATOR'S LODGE

PLAYGROUND

BASKETBALL COURT

MELBOURNE MUSEUM

TENNIS COURTS

NICHOLSON STREET

**LEGEND**

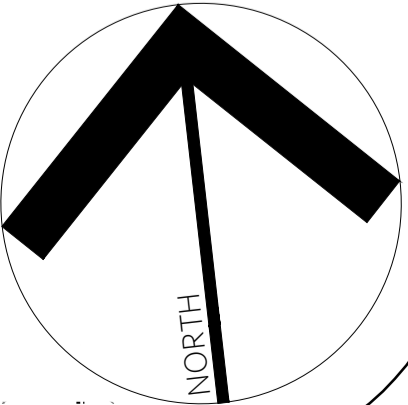
	POTENTIALLY A PRE 1880 TREE, OR AT LEAST RELATED TO 1880'S - 1890'S LAYOUT APPROPRIATE SPECIES + LOCATION		PRE 1880'S TREE		1880'S TREE
	TREE RELATED TO 1880'S - 1890'S LAYOUT APPROPRIATE SPECIES + LOCATION POSSIBLY A LATER PLANTING		1890'S TREE		

Extent of Works

Extent of Works

### Carlton Gardens Tree Replacement Strategy

4 - TREE PLANTING AGE (1880-90's) - CARLTON GARDENS NORTH Scale 1:500 @ A1 / 1:1000 @ A3





ROYAL EXHIBITION BUILDING

PARTERRES

PARTERRES

HOCHGÜRTEL FOUNTAIN

NORTH-EAST LAKE

PARTERRE

SOUTH-WEST LAKE

RATHDOWNE STREET

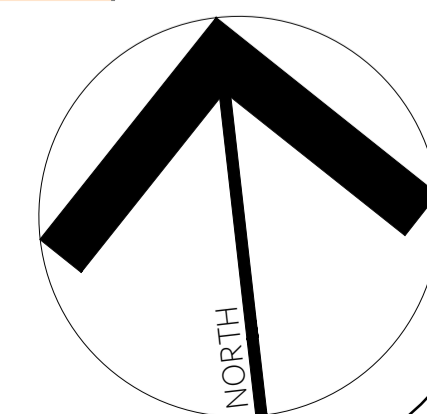
NICHOLSON STREET

VICTORIA PARADE

Carlton Gardens Tree Replacement Strategy

5 - TREE SIGNIFICANCE LEVELS - CARLTON GARDENS SOUTH

Scale 1:500 @ A1 / 1:1000 @ A3



LEGEND

- OUTSTANDING SIGNIFICANCE TREE**
- PRIMARY SIGNIFICANCE TREE**
- CONTRIBUTORY SIGNIFICANCE TREE**
- NEGATIVE IMPACT ON SIGNIFICANCE**



CARLTON STREET

CURATOR'S LODGE

PLAYGROUND

BASKETBALL COURT

MELBOURNE MUSEUM

TENNIS COURTS

NICHOLSON STREET

RATHDOWNE STREET

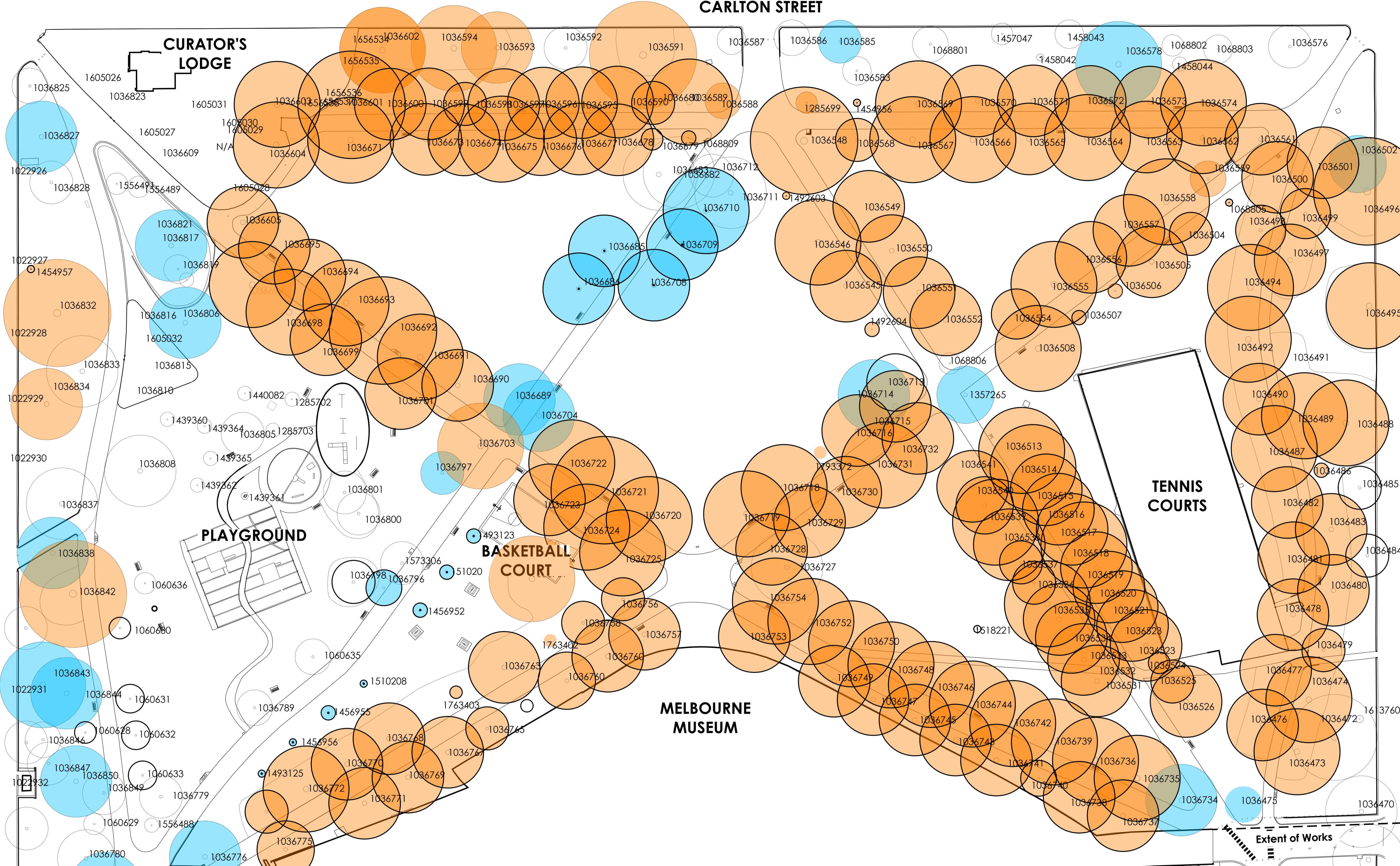
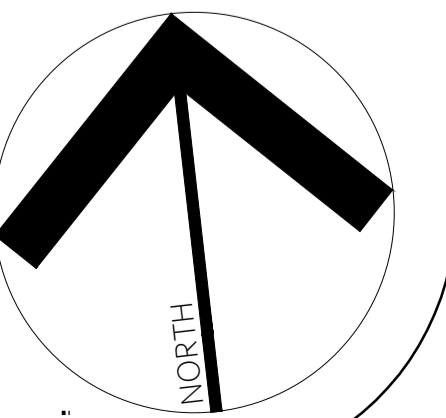
LEGEND

PRIMARY SIGNIFICANCE TREE

CONTRIBUTORY SIGNIFICANCE TREE

Carlton Gardens Tree Replacement Strategy

6 - TREE SIGNIFICANCE LEVELS - CARLTON GARDENS NORTH Scale 1:500 @ A1 / 1:1000 @ A3



Extent of Works

Extent of Works

CHECK



ROYAL EXHIBITION BUILDING

PARTERRES

PARTERRES

HOCHGÜRTEL FOUNTAIN

PARTERRE

NORTH-EAST LAKE

SOUTH-WEST LAKE

RATHDOWNE STREET

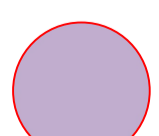

NICHOLSON STREET

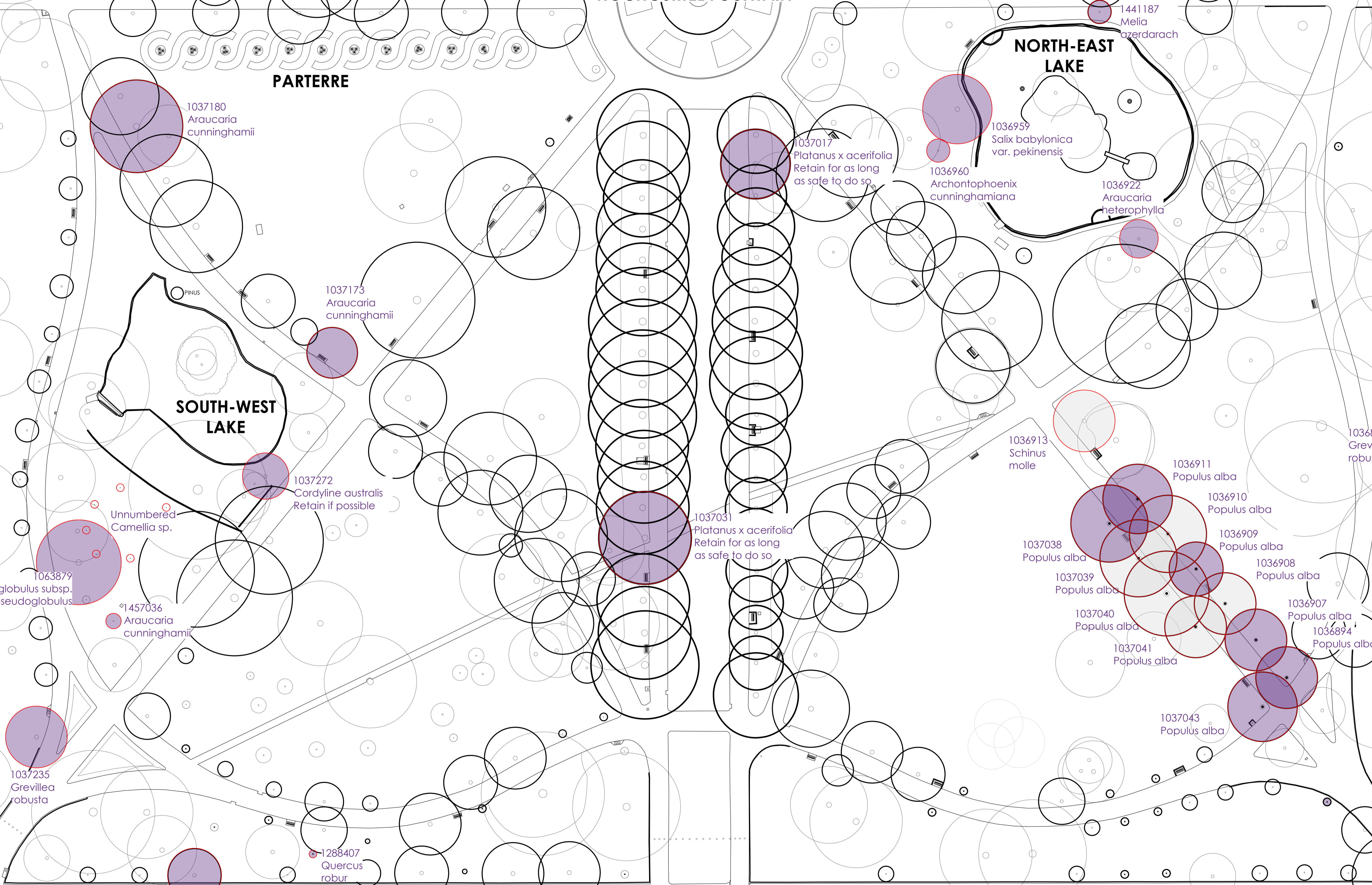
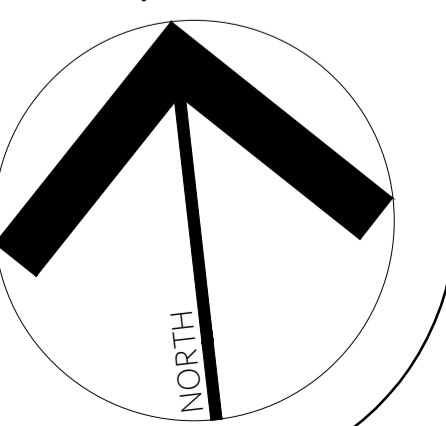
VICTORIA PARADE

Carlton Gardens Tree Replacement Strategy

7 - ANTICIPATED TREE REMOVALS - CARLTON GARDENS SOUTH Scale 1:500 @ A1 / 1:1000 @ A3

**LEGEND**

	TREE - LESS THAN 10 YEARS ULE Removal anticipated in time frame of report		<b>REMOVE</b> As part of Avenue replacement or landscape management
---	--	---	--





CARLTON STREET

CURATOR'S LODGE

1036501  
*Ulmus glabra*

1036680  
*Ulmus procera* - retain if possible

1605030  
*Betula sp.*

1605028  
*Syzygium floribundum*

1036694  
*Ulmus procera*

1036685  
*Populus alba*

1036686  
*Populus alba*

1036710  
*Populus alba*

1036709  
*Populus alba*

1036708  
*Populus alba*

1036506  
*Quercus robur*

1556491  
*Acer truncatum* x *A. platanoides* 'Keithsform'

1285702  
*Quercus acutissima*

1439360  
*Syzygium ingens*

TENNIS COURTS

RATHDOWNE STREET

NICHOLSON STREET

PLAYGROUND

BASKETBALL COURT

1036800  
*Celtis australis*

1573306  
*Melaleuca stypheloides*

1493123  
*Populus alba*

1510206  
*Populus alba*

1456952  
*Populus alba*

1060635  
*Melia azerdarach*

1036789  
*Melia azerdarach*

1510208  
*Populus alba*

1456955  
*Populus alba*

1456956  
*Populus alba*

1493125  
*Populus alba*

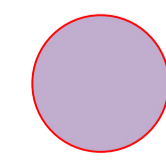
MELBOURNE MUSEUM

1036776  
*Eucalyptus botryoides*

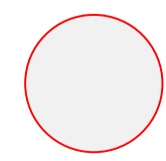
Extent of Works

Extent of Works

LEGEND



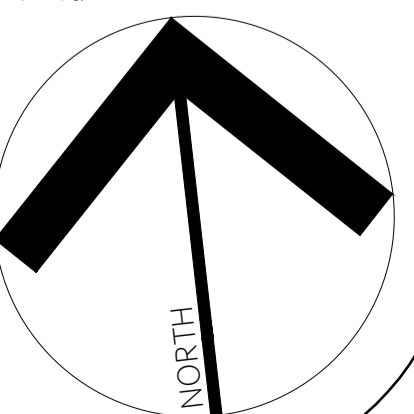
TREE - LESS THAN 10 YEARS ULE  
Removal anticipated in time frame of report



REMOVE  
As part of Avenue replacement or landscape management

### Carlton Gardens Tree Replacement Strategy

8 - ANTICIPATED TREE REMOVALS - CARLTON GARDENS NORTH Scale 1:500 @ A1 / 1:1000 @ A3





ROYAL EXHIBITION BUILDING

PARTERRES

PARTERRES

HOCHGÜRTEL FOUNTAIN

NORTH-EAST LAKE

PARTERRE

SOUTH-WEST LAKE

PINUS

RATHDOWNE STREET

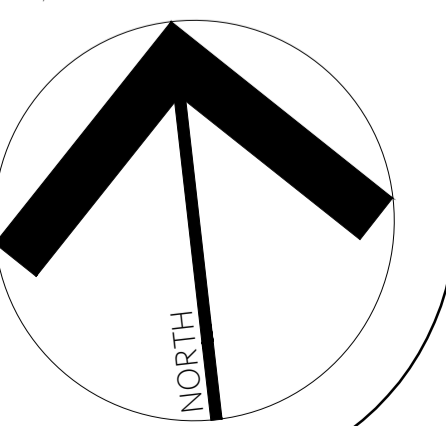
NICHOLSON STREET

VICTORIA PARADE

# Carlton Gardens Tree Replacement Strategy

Source: Meredith Gould Architects Pty Ltd (2004, p.5)  
- Figure 3 Postulated implemented 1880 Plan  
"Carlton Gardens: Shrub and Floral Plantings - 1880  
Melbourne International Exhibition"

13 - POSTULATED 1880 GARDEN BEDS - CARLTON GARDENS SOUTH Scale 1:500 @ A1 / 1:1000 @ A3





ROYAL EXHIBITION BUILDING

RESTORED  
PARTERRES

RESTORED  
PARTERRES

HOCHGÜRTEL FOUNTAIN

PARTERRE

NORTH-EAST  
LAKE

ISLAND PLANTING  
(Refresh)

INFORMAL PLANTING

ISLAND PLANTING

SOUTH-WEST  
LAKE

MULCH

VICTORIA PARADE

RATHDOWNE STREET

NICHOLSON STREET

# Carlton Gardens Tree Replacement Strategy

14 - EXISTING GARDEN BEDS - CARLTON GARDENS SOUTH Scale 1:500 @ A1 / 1:1000 @ A3

