

Federation Square Lighting Stage 2

Existing Lighting Equipment and Electrical Services Demolition Plan

Drawing List - Demolition Plan Lighting		
Drawing Number	Drawing Name	Revision
DP-00-000	DEMOLITION PLAN - COVER SHEET & DRAWING INDEX	P01
DP-00-001	DEMOLITION PLAN - LUMINAIRE SCHEDULE	P01
DP-01-000	DEMOLITION PLAN - SITE PLAN	P01
DP-01-001	DEMOLITION PLAN - NGV SOUTH - UPPER LEVEL	P01
DP-01-002	DEMOLITION PLAN - NGV SOUTH - LOWER LEVEL	P01
DP-01-003	DEMOLITION PLAN - NGV NORTH - UPPER LEVEL	P01

General Notes:

- Notes shall be read in conjunction with all other relevant drawings and documents.
- Contractor shall carry out work in a safe manner in accordance with applicable statutory regulation, by-laws or rules. Contractor is responsible for occupational health and safety of personnel and general public in accordance with legislative requirements, and accepted industry practice.
- Contractor shall refer discrepancies to the principal representative before proceeding with work.
- Contractor shall submit details of changes of scope, work methods or materials etc. for approval before proceeding.
- Contractor shall obtain necessary permits and approvals from Federation Square before commencing work on site.
- Do not obtain dimensions by scaling from these drawings.
- Contractor is responsible for make good of any damages to existing elements as part of their scope of works.
- All redundant / removed equipment shall be offered to Federation Square whereupon a decision will be made as to whether this shall be retained. The contractor shall allow for transporting such equipment to an agreed position on site if retained. Where equipment is not retained the contractor shall allow for the removal and disposal in accordance with Green Star recycling and reuse guidelines.
- For all removed lighting cabling shall be retained, to serve new lighting, where it is practical and safe to do so. The assessment shall be made based on the placement on new lighting and the condition of the existing.

P01	05/04/24	AH	IK	TH
DEMOLITION PLAN				
Rev	Date	By	Chkd	Appd

ARUP

ABN: 18 000 966 165

Sky Park, One Melbourne Quarter,
699 Collins Street,
Docklands VIC 3008
ph: (03) 9668 5500
www.arup.com

Client

MAP Co.

Project Title
Federation Square Lighting Stage 2

Drawing Title
DEMOLITION PLAN - COVER SHEET & DRAWING INDEX


Scale at A1 N.T.S.

Role Specialist Lighting

Suitability Contract Documentation

Arup Job No 299281-00	Rev P01
---------------------------------	-------------------

Drawing Number
DP-00-000

Reference	Image	Fixture type and location	Action	Qty
DXS-1		Ground mounted spotlight around NGV building	Remove light fixtures. Make the site neat and safe, remove protection cage.	6
DXS-2		Surface mounted spotlight around NGV building	Remove light fixtures. Leave outreach arm. Reuse electrical and data cabling where possible.	19
DXS-3		Surface mounted bollard with spotlight and wall light near stairs at the back of NGV	Remove light fixtures and short pole. Retain electrical connection allowance for optional planter lighting in the future.	4
DXS-4		Linear batten lights in the balustrade from top pathway to lower level of carpark	Remove light fixtures. Reuse electrical and data cabling where possible.	5
DXS-5		Linear batten lights behind the ceiling mesh in covered walkway to carpark	Remove light fixtures. Reuse electrical and data cabling where possible.	19
DXP-1		Pole with linear light at the back of NGV	Disconnect linear light fixture from power, leave light fixture where is. Reuse electrical and data cabling where possible.	7
DXW-1		Recessed wall light at stairs	Remove light fixtures. Reuse electrical and data cabling where possible.	15

Drawing Notes:

1. The location and layout of existing services are estimated based on site survey and is shown for information and shall not be relied upon. The contractor shall confirm the locations and extent of existing services and submit a final demolition plan for review prior to the commencement of works.
2. For all removed lighting cabling shall be retained, to serve new lighting, where it is practical and safe to do so. The assessment shall be made based on the placement on new lighting and the condition of the existing.
3. Where required the contractor shall allow for the make good of ceiling penetrations and cut-outs to a 'as-new' state.
4. All equipment to be removed shall include the removal of associated bracketry or other support equipment.
5. All lighting that is not specifically nominated on these drawings shall be retained. Where it is unclear a query shall be raised prior to works.
6. Demolition and new installation works to be in accordance with AS/NZS 3000 - 2018.
7. All redundant penetrations are to be filled and fire rated in accordance with the requirements of the BCA/NCC.

P01	05/04/24	AH	IK	TH
DEMOLITION PLAN				
Rev	Date	By	Chkd	Appd

ARUP

ABN: 18 000 966 165
 Sky Park, One Melbourne Quarter,
 699 Collins Street,
 Docklands VIC 3008
 ph: (03) 9668 5500
 www.arup.com

Client
MAP Co.

Project Title
Federation Square Lighting Stage 2

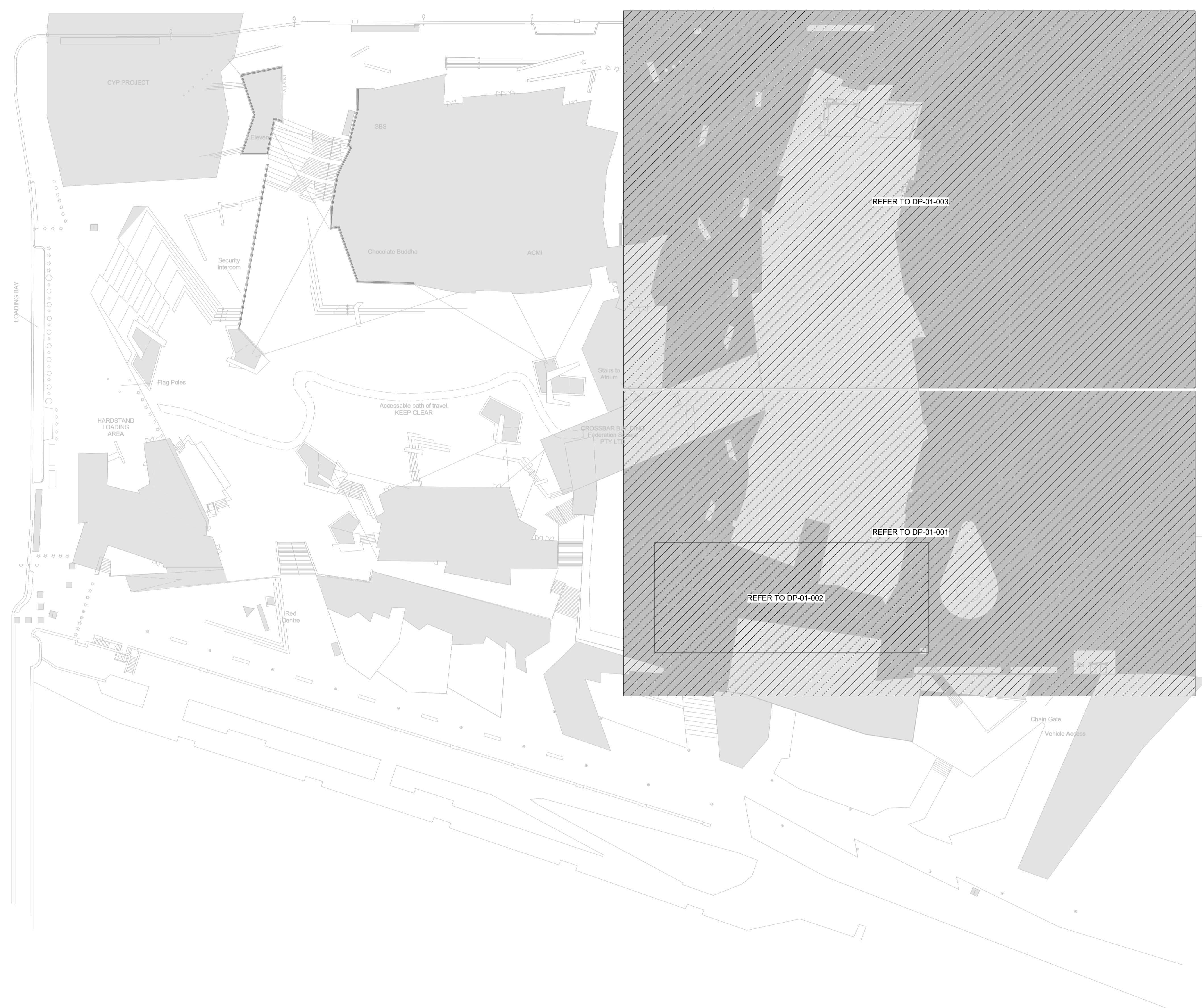
Drawing Title
DEMOLITION PLAN - LUMINAIRE SCHEDULE

Scale at A1 N.T.S.

Role Specialist Lighting

Suitability Contract Documentation

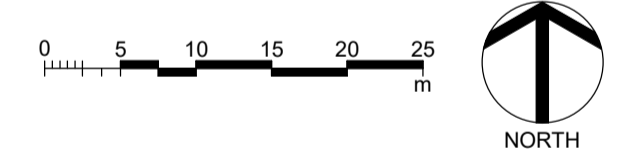
Arup Job No 299281-00	Rev P01
Drawing Number DP-00-001	



OVERALL SITE FLOOR PLAN
1:500

- Drawing Notes:
1. The location and layout of existing services are estimated based on site survey and is shown for information and shall not be relied upon. The contractor shall confirm the locations and extent of existing services and submit a final demolition plan for review prior to the commencement of works.
 2. For all removed lighting cabling shall be retained, to serve new lighting, where it is practical and safe to do so. The assessment shall be made based on the placement on new lighting and the condition of the existing.
 3. Where required the contractor shall allow for the make good of ceiling penetrations and cut-outs to a 'as-new' state.
 4. All equipment to be removed shall include the removal of associated bracketry or other support equipment.
 5. All lighting that is not specifically nominated on these drawings shall be retained. Where it is unclear a query shall be raised prior to works.
 6. Demolition and new installation works to be in accordance with AS/NZS 3000 - 2018.
 7. All redundant penetrations are to be filled and fire rated in accordance with the requirements of the BCA/NCC.

P01	05/04/24	AH	IK	TH
DEMOLITION PLAN				
Rev	Date	By	Chkd	Appd



ARUP
 ABN: 18 000 966 165
 Sky Park, One Melbourne Quarter,
 699 Collins Street,
 Docklands VIC 3008
 ph: (03) 9686 5500
 www.arup.com
 Client
MAP Co.

Project Title
Federation Square Lighting Stage 2

Drawing Title
DEMOLITION PLAN - SITE PLAN

Scale at A1	1 : 500
Role	Specialist Lighting
Suitability	Contract Documentation
Arup Job No	299281-00
Rev	P01
Drawing Number	DP-01-000

REFER TO DP-01-003 FOR CONTINUATION

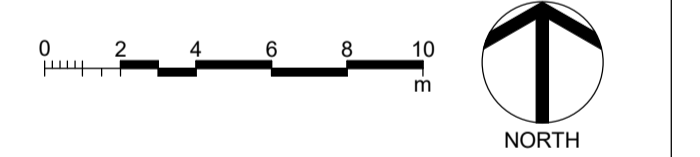
CROSSBAR BUILDING
Federation Square
PTY LTD

DEAKIN EDGE TERRACE

NGV SOUTH - UPPER LEVEL FLOOR PLAN
1:200

- Drawing Notes:
1. The location and layout of existing services are estimated based on site survey and is shown for information and shall not be relied upon. The contractor shall confirm the locations and extent of existing services and submit a final demolition plan for review prior to the commencement of works.
 2. For all removed lighting cabling shall be retained, to serve new lighting, where it is practical and safe to do so. The assessment shall be made based on the placement on new lighting and the condition of the existing.
 3. Where required the contractor shall allow for the make good of ceiling penetrations and cut-outs to a 'as-new' state.
 4. All equipment to be removed shall include the removal of associated bracketry or other support equipment.
 5. All lighting that is not specifically nominated on these drawings shall be retained. Where it is unclear a query shall be raised prior to works.
 6. Demolition and new installation works to be in accordance with AS/NZS 3000 - 2018.
 7. All redundant penetrations are to be filled and fire rated in accordance with the requirements of the BCA/NCC.

P01	05/04/24	AH	IK	TH
DEMOLITION PLAN				
Rev	Date	By	Chkd	Appd

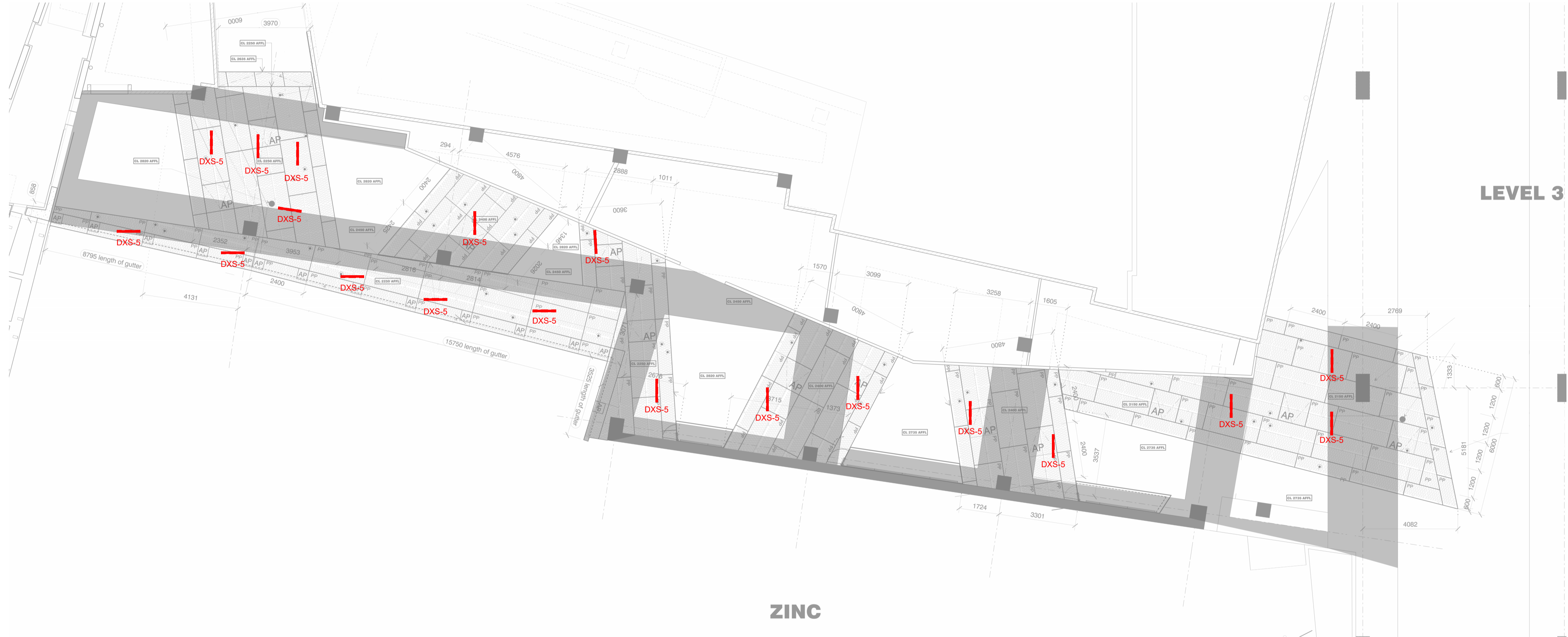


ARUP
 ABN: 18 000 966 165
 Sky Park, One Melbourne Quarter,
 699 Collins Street,
 Docklands VIC 3008
 ph: (03) 9668 5500
 www.arup.com
 Client
MAP Co.

Project Title
Federation Square Lighting Stage 2

Drawing Title
DEMOLITION PLAN - NGV SOUTH - UPPER LEVEL

Scale at A1	N.T.S.
Role	Specialist Lighting
Suitability	Contract Documentation
Arup Job No	Rev
299281-00	P01
Drawing Number	
DP-01-001	



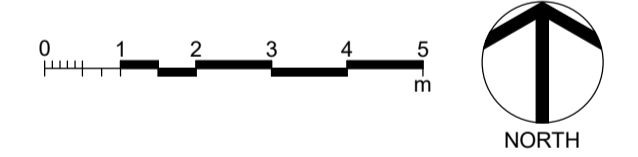
NGV SOUTH - LOWER LEVEL FLOOR PLAN
1:100

LEVEL 3

ZINC

- Drawing Notes:
1. The location and layout of existing services are estimated based on site survey and is shown for information and shall not be relied upon. The contractor shall confirm the locations and extent of existing services and submit a final demolition plan for review prior to the commencement of works.
 2. For all removed lighting cabling shall be retained, to serve new lighting, where it is practical and safe to do so. The assessment shall be made based on the placement on new lighting and the condition of the existing.
 3. Where required the contractor shall allow for the make good of ceiling penetrations and cut-outs to a 'as-new' state.
 4. All equipment to be removed shall include the removal of associated bracketry or other support equipment.
 5. All lighting that is not specifically nominated on these drawings shall be retained. Where it is unclear a query shall be raised prior to works.
 6. Demolition and new installation works to be in accordance with AS/NZS 3000 - 2018.
 7. All redundant penetrations are to be filled and fire rated in accordance with the requirements of the BCA/NGCC.
 8. Contractor to confirm exact locations and quantities on site.

P01	05/04/24	AH	IK	TH
DEMOLITION PLAN				
Rev	Date	By	Chkd	Appd



ARUP

ABN: 18 000 966 165
Sky Park, One Melbourne Quarter,
699 Collins Street,
Docklands VIC 3008
ph: (03) 9668 5500
www.arup.com

Client
MAP Co.

Project Title
Federation Square Lighting Stage 2

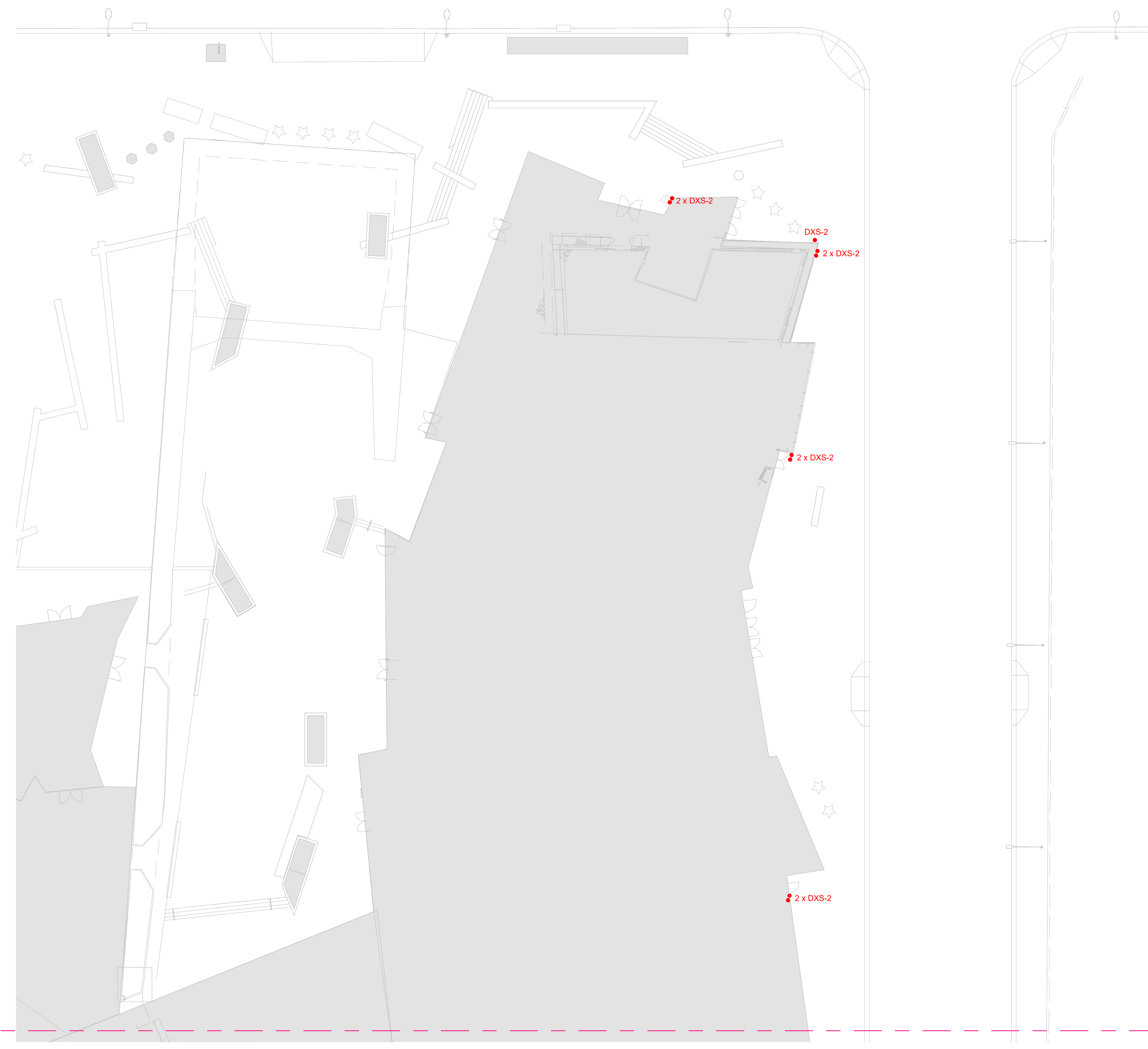
Drawing Title
DEMOLITION PLAN - NGV SOUTH - LOWER LEVEL

Scale at A1 1 : 100

Role Specialist Lighting

Suitability Contract Documentation

Arup Job No 299281-00	Rev P01
Drawing Number DP-01-002	

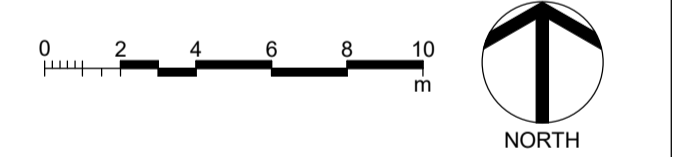


REFER TO DP-01-001 FOR CONTINUATION

NGV NORTH - UPPER LEVEL FLOOR PLAN
1:200

- Drawing Notes:
1. The location and layout of existing services are estimated based on site survey and is shown for information and shall not be relied upon. The contractor shall confirm the locations and extent of existing services and submit a final demolition plan for review prior to the commencement of works.
 2. For all removed lighting cabling shall be retained, to serve new lighting, where it is practical and safe to do so. The assessment shall be made based on the placement on new lighting and the condition of the existing.
 3. Where required the contractor shall allow for the make good of ceiling penetrations and cut-outs to a 'as-new' state.
 4. All equipment to be removed shall include the removal of associated bracketry or other support equipment.
 5. All lighting that is not specifically nominated on these drawings shall be retained. Where it is unclear a query shall be raised prior to works.
 6. Demolition and new installation works to be in accordance with AS/NZS 3000 - 2018.
 7. All redundant penetrations are to be filled and fire rated in accordance with the requirements of the BCA/NCC.

P01	05/04/24	AH	IK	TH
DEMOLITION PLAN				
Rev	Date	By	Chkd	Appd



ARUP

ABN: 18 000 966 165
 Sky Park, One Melbourne Quarter,
 699 Collins Street,
 Docklands VIC 3008
 ph: (03) 9668 5500
 www.arup.com

Client
MAP Co.

Project Title
Federation Square Lighting Stage 2

Drawing Title
DEMOLITION PLAN - NGV NORTH - UPPER LEVEL

Scale at A1 N.T.S.

Role Specialist Lighting

Suitability Contract Documentation

Arup Job No 299281-00	Rev P01
Drawing Number DP-01-003	