

CONCEPT DESIGN - DENDY STREET BEACH AMENITIES

BAYSIDE CITY COUNCIL

Architectural Drawing Schedule

SK-01	Coversheet & Drawing List
SK-02	Site - Existing / Demolition
SK-03	Site - Proposed
SK-04	Plan - Proposed
SK-05	Elevations - North & South
SK-06	Elevations - East & West
SK-07	3D Image 01
SK-08	3D Image 02
SK-09	3D Image 03
SK-10	3D Image 04
SK-11	3D Image 05
SK-12	Finishes

Area Summary (Options)

Option 01	
Building Area	34 m ²
Circulation Area	38 m ²



No.	Description	Date
H1	Heritage Victoria Issue	240911
H2	Heritage Victoria Issue	241010

**CohenLeigh
Architects**

Suite 1 Level 1, 5 Melrose Street
Sandringham, Victoria 3191

(03) 9521 6888
www.cohenleigh.com
info@cohenleigh.com

PROJECT
Dendy Street Beach Amenities

CLIENT
Bayside City Council

PROJECT SCALE
231101 1 : 500

DRAWING TITLE
Coversheet & Drawing List

DRAWING
SK-01

REV
H2



No.	Description	Date
H1	Heritage Victoria Issue	240911
H2	Heritage Victoria Issue	241010

**CohenLeigh
Architects**

Suite 1 Level 1, 5 Melrose Street
Sandringham, Victoria 3191

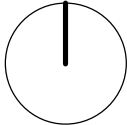
(03) 9521 6888
www.cohenleigh.com
info@cohenleigh.com

PROJECT
Dendy Street Beach Amenities

CLIENT
Bayside City Council

PROJECT
231101

SCALE
1 : 250



DRAWING TITLE
Site - Existing / Demolition

DRAWING
SK-02

REV
H2



No.	Description	Date
H1	Heritage Victoria Issue	240911
H2	Heritage Victoria Issue	241010

CohenLeigh Architects

Suite 1 Level 1, 5 Melrose Street
Sandringham, Victoria 3191

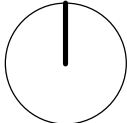
(03) 9521 6888
www.cohenleigh.com
info@cohenleigh.com

PROJECT
Dendy Street Beach Amenities

CLIENT
Bayside City Council

PROJECT
231101

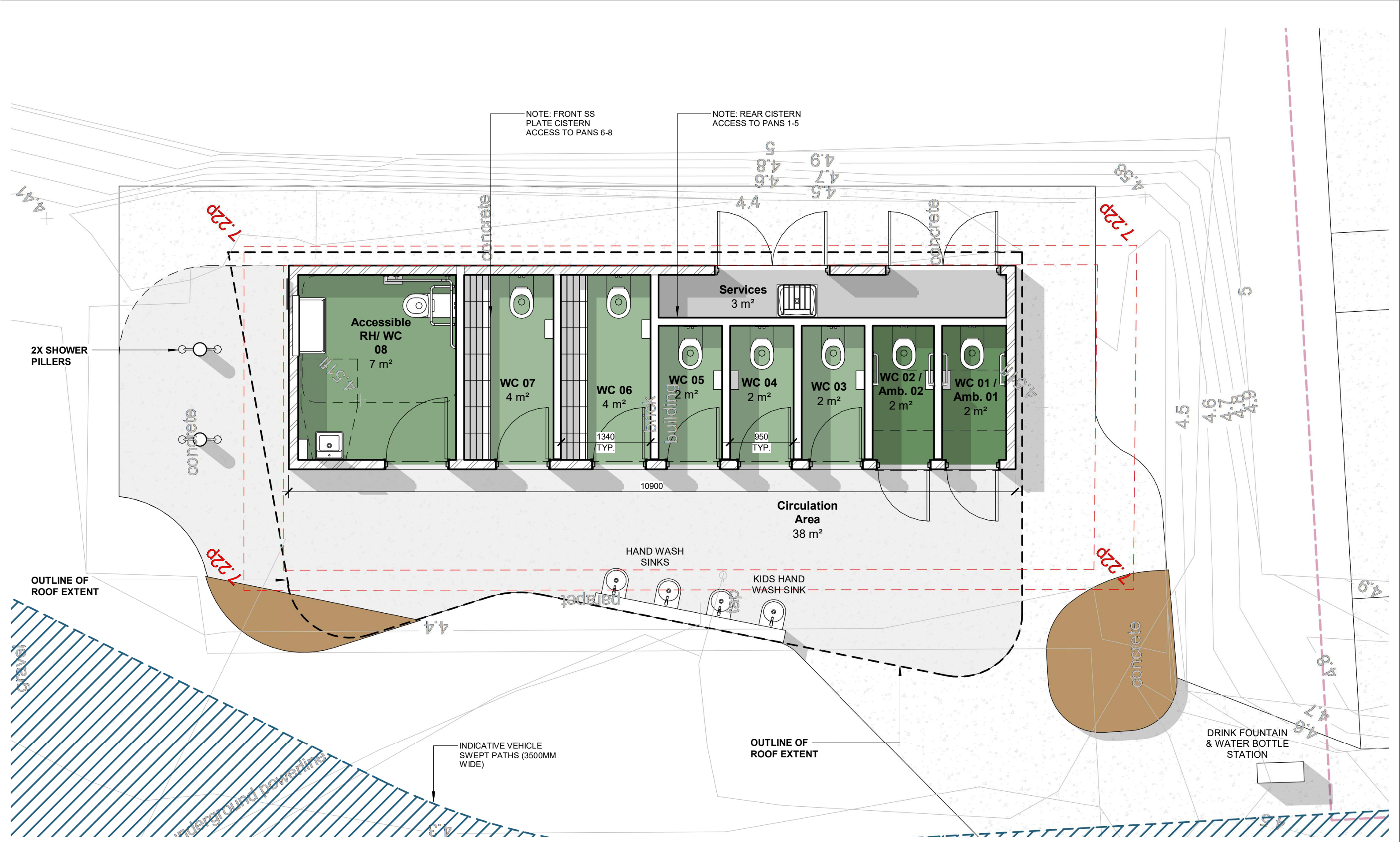
SCALE
1 : 250



DRAWING TITLE
Site - Proposed

DRAWING
SK-03

REV
H2



No.	Description	Date
H1	Heritage Victoria Issue	240911
H2	Heritage Victoria Issue	241010

CohenLeigh Architects

Suite 1 Level 1, 5 Melrose Street
Sandringham, Victoria 3191

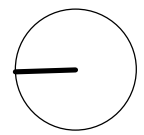
(03) 9521 6888
www.cohenleigh.com
info@cohenleigh.com

PROJECT
Dendy Street Beach Amenities

CLIENT
Bayside City Council

PROJECT
231101

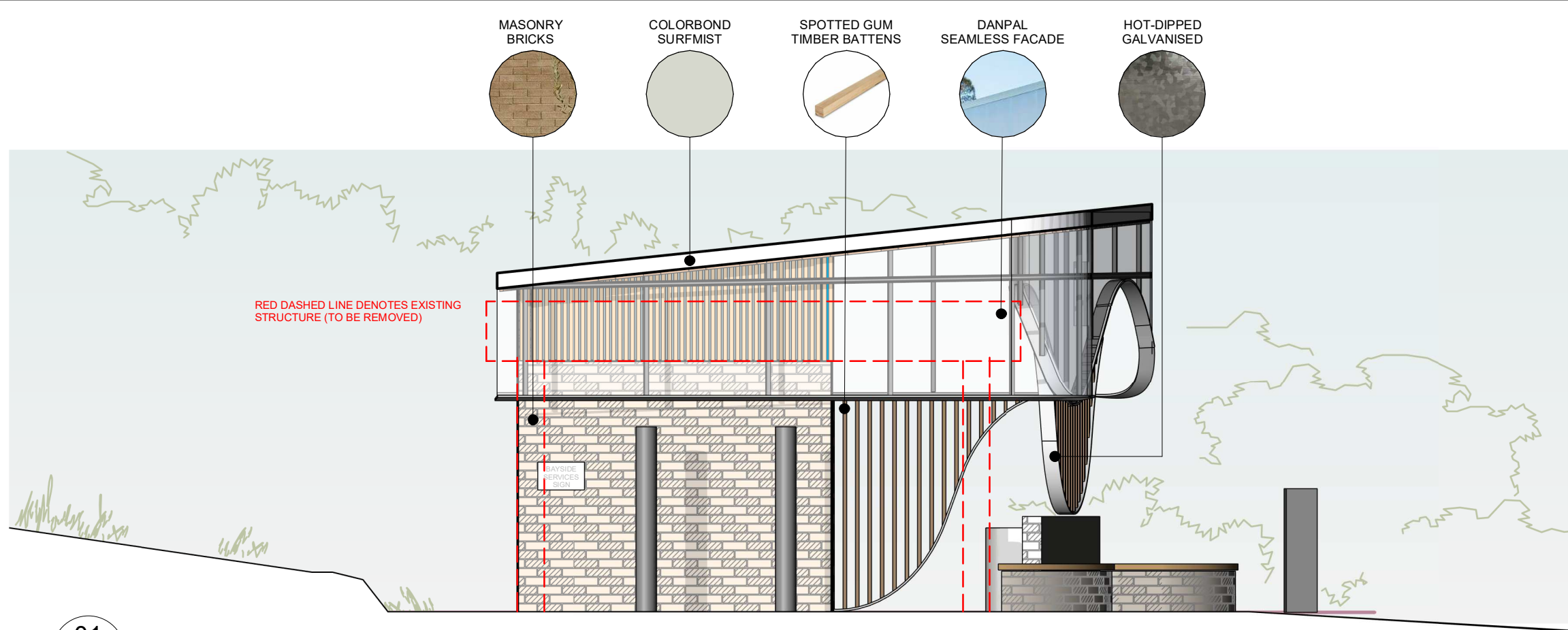
SCALE
1 : 50



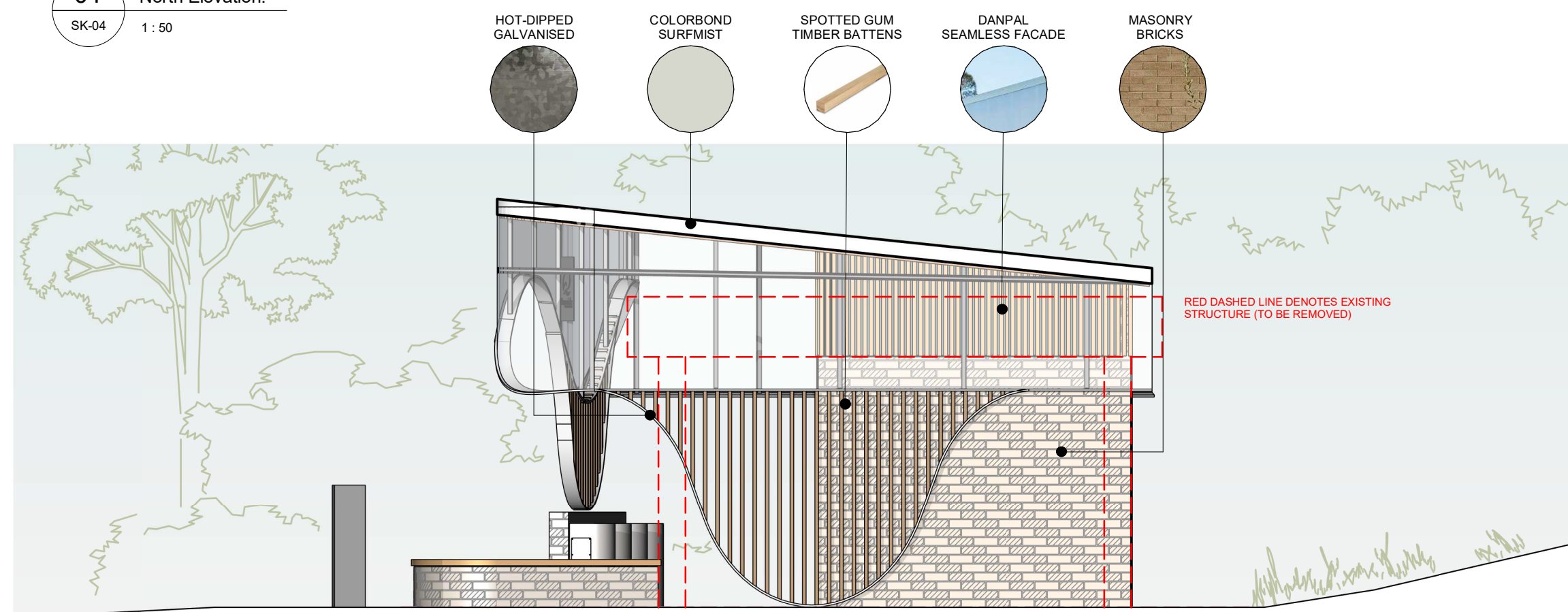
DRAWING TITLE
Plan - Proposed

DRAWING
SK-04

REV
H2



01 North Elevation.
SK-04 1:50



02 South Elevation.
SK-04 1:50

No.	Description	Date
H1	Heritage Victoria Issue	240911
H2	Heritage Victoria Issue	241010

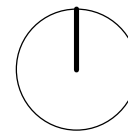
CohenLeigh Architects
 Suite 1 Level 1, 5 Melrose Street
 Sandringham, Victoria 3191
 (03) 9521 6888
 www.cohenleigh.com
 info@cohenleigh.com

PROJECT
Dendy Street Beach Amenities

CLIENT
 Bayside City Council

PROJECT
 231101

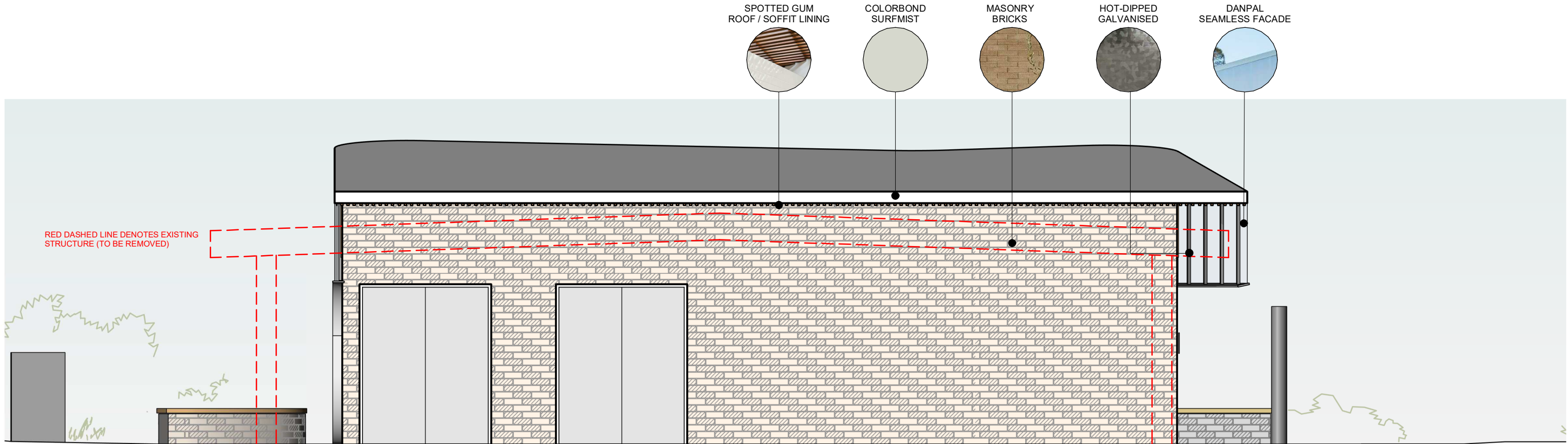
SCALE
 As indicated



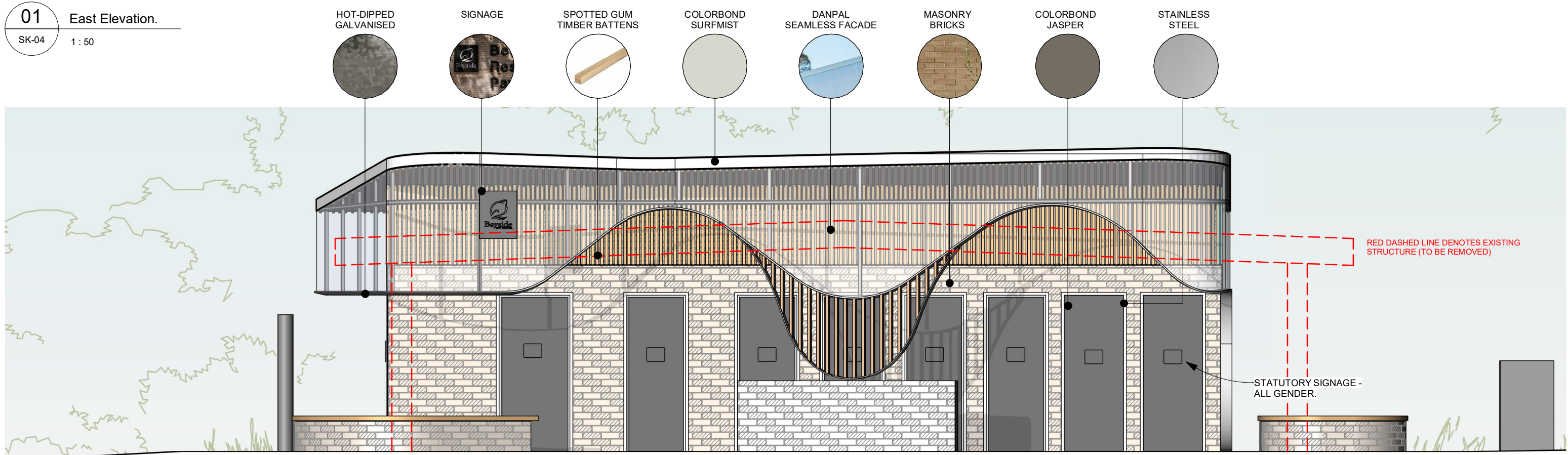
DRAWING TITLE
Elevations - North & South

DRAWING
SK-05

REV
H2



01 East Elevation.
SK-04 1 : 50



02 West Elevation.
1 : 50

No.	Description	Date
H1	Heritage Victoria Issue	240911
H2	Heritage Victoria Issue	241010

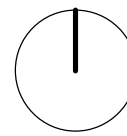
CohenLeigh Architects
 Suite 1 Level 1, 5 Melrose Street
 Sandringham, Victoria 3191
 (03) 9521 6888
 www.cohenleigh.com
 info@cohenleigh.com

PROJECT
Dendy Street Beach Amenities

CLIENT
 Bayside City Council

PROJECT
 231101

SCALE
 As indicated



DRAWING TITLE
Elevations - East & West

DRAWING
SK-06

REV
H2



NOTE: PLEASE REFER TO LANDSCAPE DRAWINGS AND VISUALISATIONS FOR FULL EXTENT OF LANDSCAPE CONCEPTS.

No.	Description	Date
H1	Heritage Victoria Issue	240911
H2	Heritage Victoria Issue	241010

**CohenLeigh
Architects**

Suite 1 Level 1, 5 Melrose Street
Sandringham, Victoria 3191

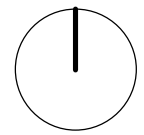
(03) 9521 6888
www.cohenleigh.com
info@cohenleigh.com

PROJECT
Dendy Street Beach Amenities

CLIENT
Bayside City Council

PROJECT
231101

SCALE



DRAWING TITLE
3D Image 01

DRAWING
SK-07

REV
H2



NOTE: PLEASE REFER TO LANDSCAPE DRAWINGS AND VISUALISATIONS FOR FULL EXTENT OF LANDSCAPE CONCEPTS.

No.	Description	Date
H1	Heritage Victoria Issue	240911
H2	Heritage Victoria Issue	241010

**CohenLeigh
Architects**

Suite 1 Level 1, 5 Melrose Street
Sandringham, Victoria 3191

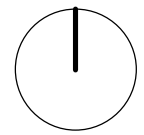
(03) 9521 6888
www.cohenleigh.com
info@cohenleigh.com

PROJECT
Dendy Street Beach Amenities

CLIENT
Bayside City Council

PROJECT
231101

SCALE



DRAWING TITLE
3D Image 02

DRAWING
SK-08

REV
H2



NOTE: PLEASE REFER TO LANDSCAPE DRAWINGS AND VISUALISATIONS FOR FULL EXTENT OF LANDSCAPE CONCEPTS.

No.	Description	Date
H1	Heritage Victoria Issue	240911
H2	Heritage Victoria Issue	241010

**CohenLeigh
Architects**

Suite 1 Level 1, 5 Melrose Street
Sandringham, Victoria 3191

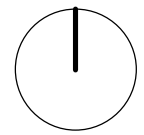
(03) 9521 6888
www.cohenleigh.com
info@cohenleigh.com

PROJECT
Dendy Street Beach Amenities

CLIENT
Bayside City Council

PROJECT
231101

SCALE



DRAWING TITLE
3D Image 03

DRAWING
SK-09

REV
H2



NOTE: PLEASE REFER TO LANDSCAPE DRAWINGS AND VISUALISATIONS FOR FULL EXTENT OF LANDSCAPE CONCEPTS.

No.	Description	Date
H1	Heritage Victoria Issue	240911
H2	Heritage Victoria Issue	241010

**CohenLeigh
Architects**

Suite 1 Level 1, 5 Melrose Street
Sandringham, Victoria 3191

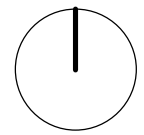
(03) 9521 6888
www.cohenleigh.com
info@cohenleigh.com

PROJECT
Dendy Street Beach Amenities

CLIENT
Bayside City Council

PROJECT
231101

SCALE



DRAWING TITLE
3D Image 04

DRAWING
SK-10

REV
H2



NOTE: PLEASE REFER TO LANDSCAPE DRAWINGS AND VISUALISATIONS FOR FULL EXTENT OF LANDSCAPE CONCEPTS.

No.	Description	Date
H1	Heritage Victoria Issue	240911
H2	Heritage Victoria Issue	241010

**CohenLeigh
Architects**

Suite 1 Level 1, 5 Melrose Street
Sandringham, Victoria 3191

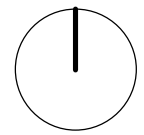
(03) 9521 6888
www.cohenleigh.com
info@cohenleigh.com

PROJECT
Dendy Street Beach Amenities

CLIENT
Bayside City Council

PROJECT
231101

SCALE



DRAWING TITLE
3D Image 05

DRAWING
SK-11

REV
H2

01



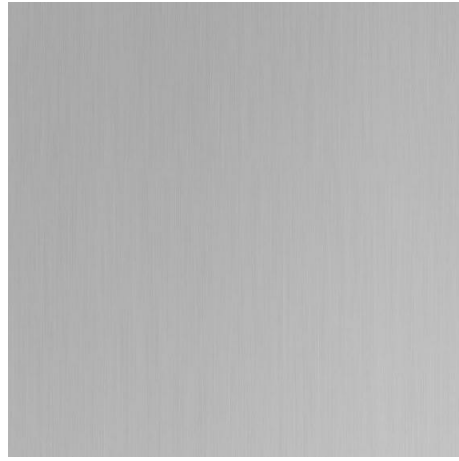
MASONARY BRICKS
ADBRI MASONARY OR SIMILAR
LIGHT SANDY TONES
230MM X 110MM X 76MM

02



DOOR LEAFS
PAINT FINISH
COLORBOND JASPER

03



DOOR FRAME
STAINLESS STEEL

04



FACADE / ROOF STEEL FRAMEWORK
HOT-DIPPED GALVANISED

05



FACADE FLASHING / CAPPINGS
COLORBOND SURFMIST

06



ROOF / SOFFIT LINING
1. SOFFIT BATTENS
LIGHT TONES TIMBER
SPOTTED GUM OR SIMILAR

2. ROOF SHEETING
DANPAL ROOF SHEETING
SYSTEM (T.B.C)

07



EXTERNAL / INTERNAL PAVING SURFACE
EXPOSED AGGREGATE CONCRETE
HANSONS EXPOSED
BETHANY

08



FACADE SHEETING
DANPAL SEAMLESS FACADE
2 SKINS INTERNAL / INTERNAL
CLEAR (T.B.A)

09



**EXTERNAL / INTERNAL
FIXTURES GENERALLY**
STAINLESS STEEL

10



TIMBER BATTENS GENERALLY
42MM X 42MM HARDWOOD
SPOTTED GUM OR SIMILAR

No.	Description	Date
H1	Heritage Victoria Issue	240911
H2	Heritage Victoria Issue	241010

**CohenLeigh
Architects**

Suite 1 Level 1, 5 Melrose Street
Sandringham, Victoria 3191

(03) 9521 6888
www.cohenleigh.com
info@cohenleigh.com

PROJECT
Dendy Street Beach Amenities

CLIENT
Bayside City Council

PROJECT SCALE
231101

DRAWING TITLE
Finishes
DRAWING
SK-12

REV
H2