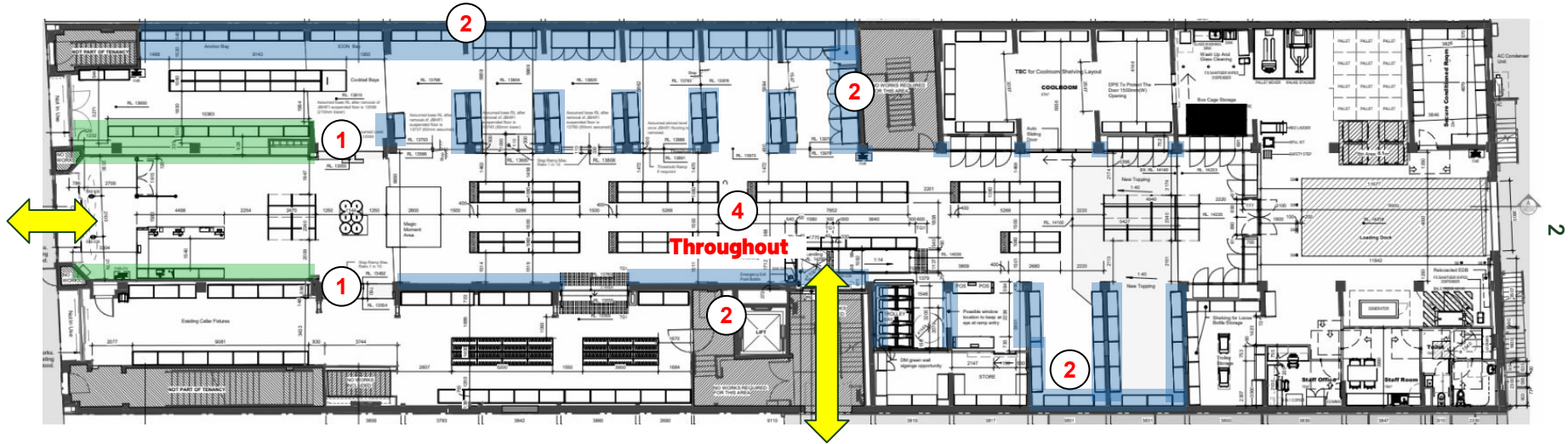
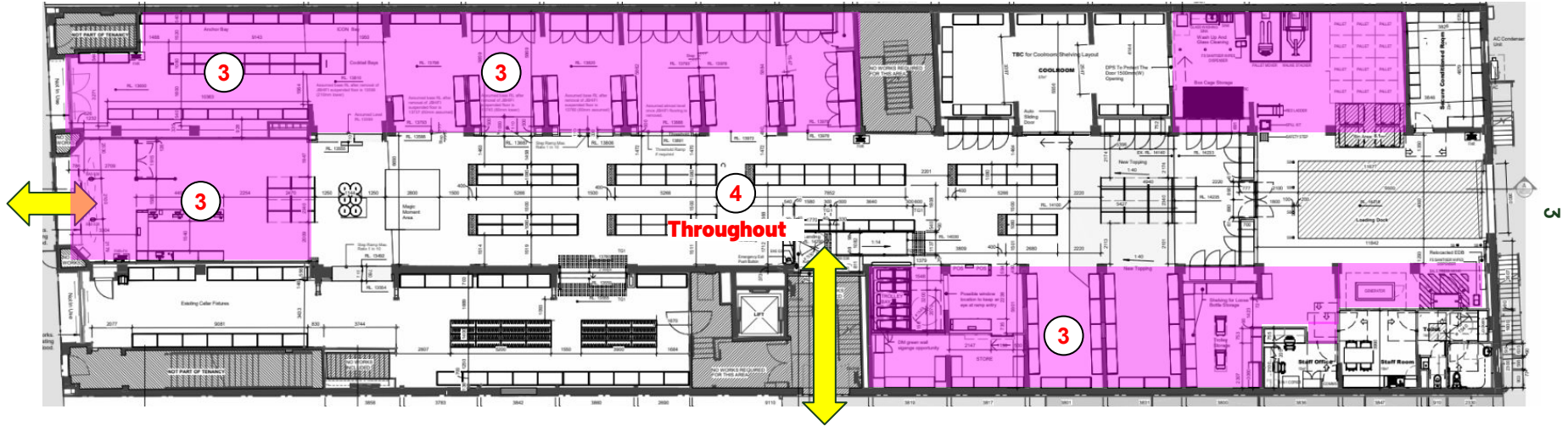

Painting/ Finishes Brief
Internal - Heritage Items

04.06.06

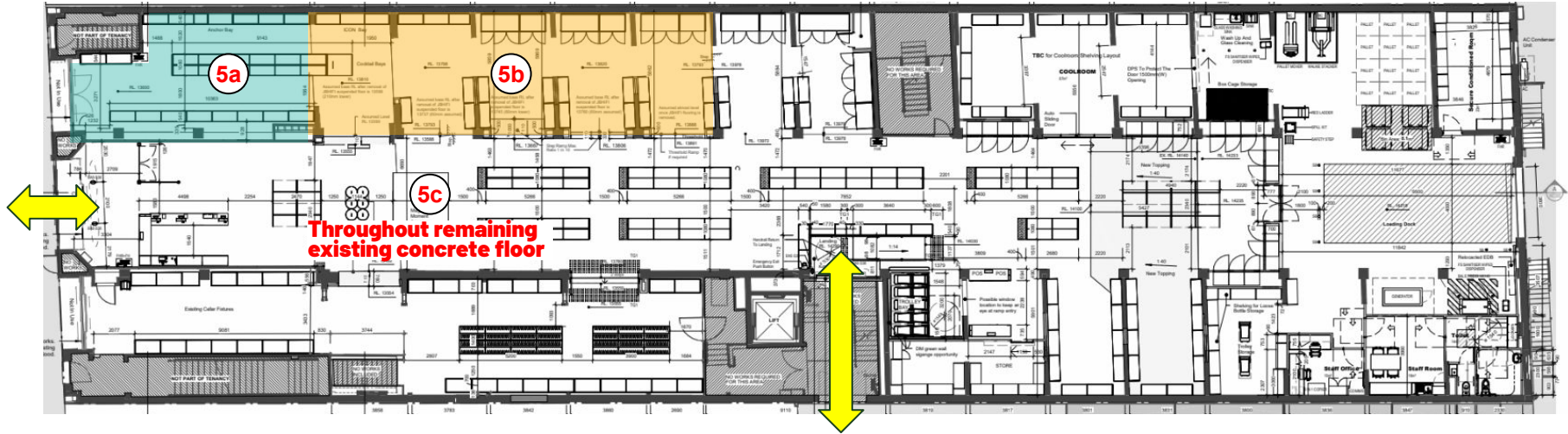
Heritage Wall Plan



Heritage RCP



Heritage Floor Finishes Plan



1 Heritage Shop Fronts

Brief: Remove the paint from the heritage shop fronts. These are made up of glazed panels, mullions, architrave and a hob wall. Removal of paint on to glazed panels in order to restore glazing to clear glass. Care to be taken on mullions. Design intent is to restore them back to the patina underneath the paint. Hob finish to be returned to visible original tile finish.

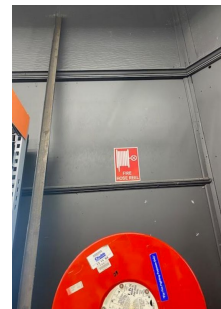
Extents: Extent of areas as highlighted. For take off quantities and additional details refer to Architects Tender drawings.

Process: Methodology to be provided by contractor prior to commencement of works alongside a sample to demonstrate methodology.

Considerations: Heritage shop fronts finish to be in line with design intent. This has been approved by Heritage Victoria and is required in order to meet Heritage guidelines and approvals. Consideration should be made in the even the mullions original patina is damaged or unrestorable. Proposal for new paint finish to may be required - in this instance the Heritage consultants would need to approve the paint prior to undertaking works.

Approvals: All finish samples to be approved by Artro & EDG Design prior to works commencement on site.

Notes: Visit required to sight required finish and existing conditions. Contractor to liaise with Artro as to location and availability of area to undertake control sample. Any unforeseen irregularities on site or deviation from approved methodology to be approved by Artro.



EX. Heritage Shop Fronts



Heritage Shop Fronts - Condition TBC on Site

2 Existing Heritage Walls

Brief: Remove the majority of existing layers of paint from heritage brick walls where nominated. The design intent is to match the existing cellar brick finish. Some variation is expected throughout given the nature of the scope. Refer to design visuals and reference images.

Extents: Extent of areas as highlighted. For take off quantities and additional details refer to Architects Tender drawings.

Process: Methodology to be provided by contractor prior to commencement of works alongside a sample to demonstrate methodology.

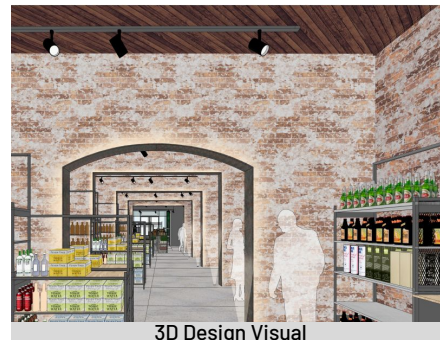
Considerations: Heritage brickwork finish to be in line with design intent. This has been approved by Heritage Victoria and is required in order to meet Heritage guidelines and approvals.

Approvals: All finish samples to be approved by Artro & EDG Design prior to works commencement on site.

Notes: Visit required to sight required finish and existing conditions. Existing brick walls have various paint colours and types. Small control sample to be prepared prior to commencement of works. Sample to be approved by Artro & EDG Design. Contractor to liaise with Artro as to location and availability of area to undertake control sample. Any unforeseen irregularities on site or deviation from approved methodology to be approved by Artro.



Cellar Brick Finish



3D Design Visual

3 Existing Heritage Ceilings

Brief: Remove the majority of existing layers of paint from heritage ceilings as nominated. The design intent is to reveal the existing timber finish that is underneath the current layers of white ceiling paint. Refer to design visuals and reference images.

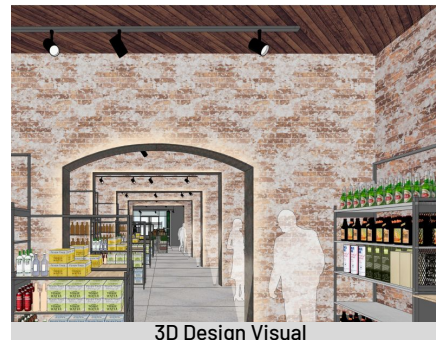
Extents: Extent of areas as highlighted. For take off quantities and additional details refer to Architects Tender drawings.

Process: Methodology to be provided by contractor prior to commencement of works alongside a sample to demonstrate methodology.

Considerations: Heritage ceiling finish to be in line with design intent. This has been approved by Heritage Victoria and is required in order to meet Heritage guidelines and approvals. In the instance that the original paint finish cannot be revealed or is damaged in some way a colour match for a new paint finish is to be provided, this will need to be approved by Heritage prior to undertaking works.

Approvals: All finish samples to be approved by Artro & EDG Design prior to works commencement on site.

Notes: Visit required to sight required finish and existing conditions. Existing ceiling in varying conditions. . Small control sample to be prepared prior to commencement of works. Sample to be approved by Artro & EDG Design. Contractor to liaise with Artro as to location and availability of area to undertake control sample. Any unforeseen irregularities on site or deviation from approved methodology to be approved by Artro.



4 Existing Heritage Columns & Nominated Architrave

Brief: Paint columns and nominated architrave to match upper existing classic architecture.

Extents: Extent of areas as highlighted. For take off quantities and additional details refer to Architects Tender drawings.

Process: Match existing upper colour.

Considerations: Final colour match to be approved by Artro & EDG Design.

Approvals: All finish samples to be approved by Artro & EDG Design prior to works commencement on site.

Notes: Visit required to sight required finish and existing conditions.



5 Existing Heritage Floor

Brief:

5a: Reveal existing heritage floorboards (Image A). Make allowance for protective sealant and small touch ups to existing stain.

5b: Reveal existing floorboards (Image b). Make allowance for stain/ paint with relevant sealant to match 5a.

5c: Existing Concrete - make good if required to match surrounding concrete (varies throughout site)

Extents: Extent of areas as highlighted. For take off quantities and additional details refer to Architects Tender drawings.

Process: As outlined in brief.

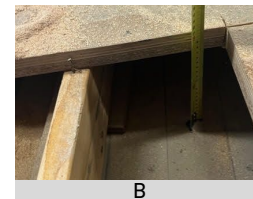
Considerations: Final colour match to be approved by Artro & EDG Design.

Approvals: All finish samples to be approved by Artro & EDG Design prior to works commencement on site.

Notes: Visit required to sight required finish and existing conditions.



A



B



C