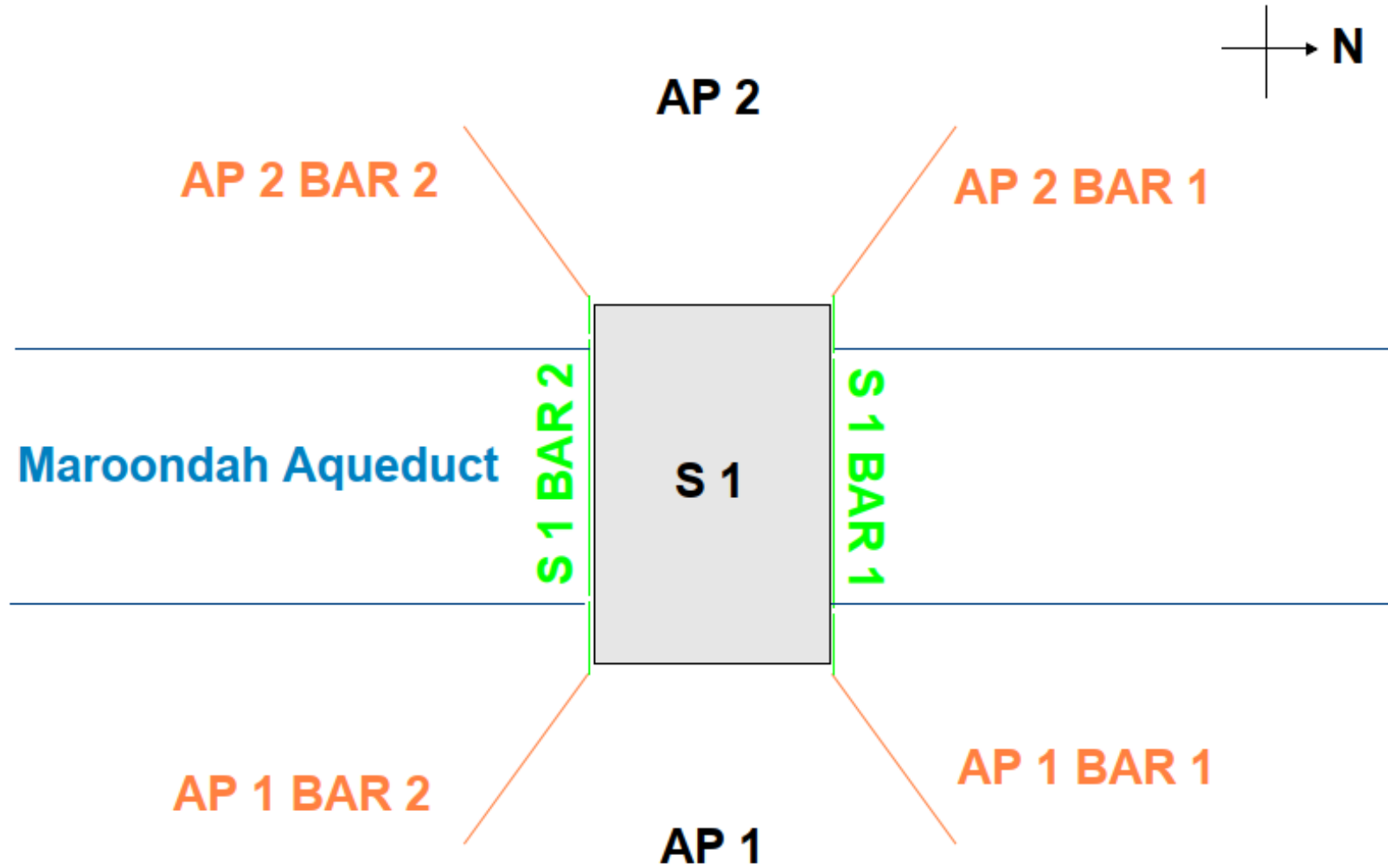


Structure ID	SN6028
Bridge Name	Eltham-Yarra Glen Rd Bridge
Crossing (road or stream)	Maroondah Aqueduct
Structure Type	Bridge
Asset Class	Road over River
Construction Material	Masonry
Date of Construction	4/14/1905
Date of Inspection	29/08/2023



Eltham-Yarra Glen Rd Bridge



Naming convention

NOT FOR CONSTRUCTION

No.	Revision	By	Chk	Appd	Date
1	1ST ISSUE	AB	AC	SS	18/6/2024



Original Scale (A1)	Design	AB	Date
Reduced Scale (A3)	Drawn	AB	18/06/2024
	Dwg Verifier	SS	
	Dwg Check	AC	



Client:	ELTHAM-YARRA GLEN ROAD BRIDGE DEFECT REPAIR WORKS
---------	---

Title:	DEFECT REPAIRS SHEET 01 OF 04
--------	-------------------------------

Discipline:	STRUCTURES
Drawing No.:	H372089 - STR - DRG - 001
Rev.:	A

COMPONENT	DEFECT	LOCATION	AFFECTED AREA (APPROX.)	REPAIR METHOD
BRIDGE PARAPET	CRACKING	<ul style="list-style-type: none"> - NORTHERN PARAPET, APPROX. 2.7M FROM EAST END - NORTHERN PARAPET, APPROX. 1.3M FROM WEST END - NORTHERN PARAPET, MIDSPAN - NORTHERN PARAPET, APPROX. 1.8M FROM WEST END - NORTHERN PARAPET, AT EAST END IMPOST - SOUTHERN PARAPET, APPROX. 3M FROM EAST END - SOUTHERN PARAPET, MIDSPAN - SOUTHERN PARAPET, APPROX. 0.7M FROM WEST END 	<ul style="list-style-type: none"> - FULL HEIGHT CRACK RANGING FROM 1.5MM TO 8MM (DEFECT 2) - CRACK WIDTH UP TO 1.4MM, PROPAGATING OVER 3-4NO. BRICKS (DEFECT 3) - FULL HEIGHT CRACK WITH UP TO 0.7MM NOTED WITH VEGETATION/MOSS GROWING WITHIN CRACKS (DEFECT 4) - CRACK WIDTH UP TO 1.4MM NOTED AT TOP FACE (DEFECT 5) - HORIZONTAL CRACK AT TOP LAYER OF BRICKS UP TO 2MM NOTED WITH LENGTH OF 1.6M LONG (DEFECT 7) - FULL HEIGHT CRACK UP TO 2MM (DEFECT 8) - FULL HEIGHT CRACK UP TO 1MM, PROPAGATES FROM TOP FACE TO BOTTOM (DEFECT 9) - CRACKS WIDTH UP TO 3MM ON TOP FACE OF PARAPET (DEFECT 10) 	REPOINT CRACKED MORTAR IN ACCORDANCE WITH RPM32 IN BRIDGE MAINTENANCE AND REPAIR MANUAL 2018
WATERWAY INVENT PROTECTION	CRACKING	<ul style="list-style-type: none"> - EAST WATERWAY - WEST FACE OF WATERWAY INVENT PROTECTION 	<ul style="list-style-type: none"> - FULL LENGTH LONGITUDINAL CRACK UP TO 0.3MM (DEFECT 13) - VERTICAL CRACKS UP TO 1MM (DEFECT 27) 	REPAIR THE CRACK WITH GROUT/EPOXY IN ACCORDANCE WITH RPM02 IN BRIDGE MAINTENANCE AND REPAIR MANUAL 2018
	SPALLING	<ul style="list-style-type: none"> - WEST FACE OF WATERWAY INVENT PROTECTION 	<ul style="list-style-type: none"> - SPALLING OF CONCRETE APPROX. 1300MM X 500MM IN SIZE (DEFECT 26) 	PATCH REPAIR OF CONCRETE IN ACCORDANCE WITH RPM09 IN BRIDGE MAINTENANCE AND REPAIR MANUAL 2018
BRIDGE ARCH	MORTAR LOSS	<ul style="list-style-type: none"> - NORTHERN FACE, WEST ABUTMENT - BOTH FACES, ABOVE WATERWAY INVENT PROTECTION - SOUTH FACE, BELOW WEST PARAPET 	<ul style="list-style-type: none"> - MORTAR LOSS ON ARCH RING (DEFECT 16) - MORTAR LOSS NOTED UP TO THREE LAYERS OF BRICKS (DEFECT 20) - MORTAR LOSS OF ARCH BRIDGE (DEFECT 23) 	REPOINT MORTAR IN ACCORDANCE WITH RPM32 IN BRIDGE MAINTENANCE AND REPAIR MANUAL 2018
	CRACKING	<ul style="list-style-type: none"> - CROWN OF ARCH - MIDSPAN, CLOSE TO SWALLOW NEST - WEST FACE, SOUTHERN ELEVATION -NORTHERN SPANDREL WALL, EAST ABUTMENT - SOUTHERN SPANDREL WALL, EAST ABUTMENT 	<ul style="list-style-type: none"> - FULL LENGTH TRANSVERSE CRACK RANGES FROM HAIRLINE TO 0.4MM FOR ENTIRE LEGTH, MAINLY RUNS ALONG MORTAR (DEFECT 19) - LONGITUDINAL CRACK RANGING FROM HAIRLINE TO 0.8MM ACROSS ENTIRE LENGTH (DEFECT 21) - LONGITUDINAL CRACK RANGING FROM HAIRLINE TO 1.2MM FOR APPROX. 2.5M LONG ON ARCH (DEFECT 22) - FULL HEIGHT VERTICAL CRACK RANGING FROM 0.5MM TO 8MM ON SPANDREL WALL (DEFECT 24) - FULL HEIGHT VERTICAL CRACK RANGING FROM 0.5MM TO 2MM ON SPANDREL WALL (DEFECT 25) 	REPOINT CRACKED MORTAR IN ACCORDANCE WITH RPM32 IN BRIDGE MAINTENANCE AND REPAIR MANUAL 2018

* PLEASE REFER TO INSPECTION REPORT AND DEFECT REGISTER FOR FURTHER DETAIL

NOT FOR CONSTRUCTION

No.	Revision	By	Chk	Appd	Date
1ST ISSUE		AB	AC	SS	18/6/2024

Drawing Originator:		Original Scale (A1)		Design		AB		18/06/2024	
HATCH		Reduced Scale (A3)		Drawn		AB			
				Dwg Verifier		SS			
				Dwg Check		AC			



Client:	Department of Transport and Planning
Project:	ELTHAM-YARRA GLEN ROAD BRIDGE DEFECT REPAIR WORKS

Title:	DEFECT REPAIRS SHEET 02 OF 04
--------	-------------------------------

Discipline:	STRUCTURES
Drawing No.:	H372089 - STR - DRG - 002
Rev.:	A



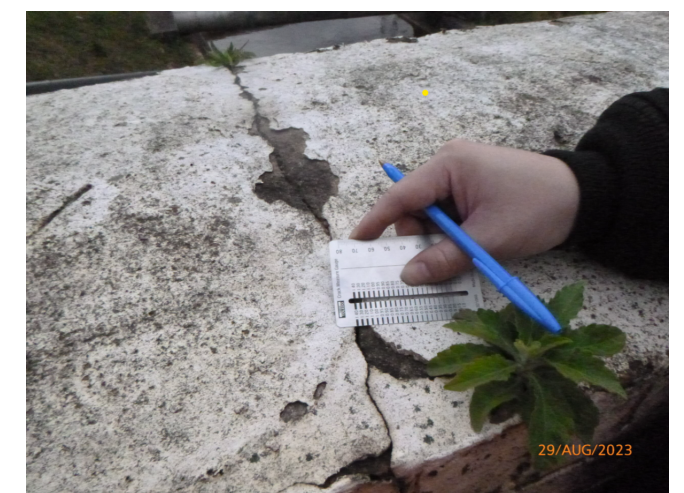
DEFECT 2: FULL HEIGHT CRACK CLOSE TO EAST END OF NORTHERN PARAPET



DEFECT 3: CRACKS PROPAGATING OVER 4NO. BRICKS AT WEST END OF NORTHERN PARAPET



DEFECT 4: FULL HEIGHT CRACK AT MIDSPAN OF NORTHERN PARAPET



DEFECT 5: CRACKS ON TOP SURFACE OF WEST END NORTHERN PARAPET



DEFECT 7: HORIZONTAL CRACK ALONG TOP LAYER OF BRICK AT NORTHERN PARAPET



DEFECT 8: FULL HEIGHT CRACK CLOSE TO EAST END OF SOUTHERN PARAPET



DEFECT 9: FULL HEIGHT CRACK AT MIDSPAN OF SOUTHERN PARAPET



DEFECT 10: CRACKS ON TOP FACE OF WEST END SOUTHERN PARAPET



DEFECT 13: FULL LENGTH LONGITUDINAL CRACK ACROSS EAST WATERWAY INVERT PROTECTION FACE



DEFECT 16: MORTAR LOSS ON NORTHERN FACE OF ARCH RING



DEFECT 19: FULL LENGTH TRANSVERSE CRACK ACROSS ENTIRE LENGTH OF ARCH CROWN



DEFECT 20: MORTAR LOSS ON TWO LAYERS OF BRICKS ABOVE EAST WATERWAY INVERT PROTECTION

NOT FOR CONSTRUCTION

No.	Revision	By	Chk	Appd	Date
1	1ST ISSUE	AB	AC	SS	18/6/2024

Drawing Originator:	HATCH	Original Scale (A1)	Design	AB	18/06/2024
		Reduced Scale (A3)	Drawn	AB	
			Dwg Verifier	SS	
			Dwg Check	AC	

Client:	VICTORIA State Government	Department of Transport and Planning
---------	-------------------------------------	--------------------------------------

Project:	ELTHAM-YARRA GLEN ROAD BRIDGE DEFECT REPAIR WORKS
----------	---

Title:	DEFECT REPAIRS SHEET 03 OF 04
--------	-------------------------------

Discipline:	STRUCTURES
Drawing No.:	H372089 - STR - DRG - 003
Rev.:	A