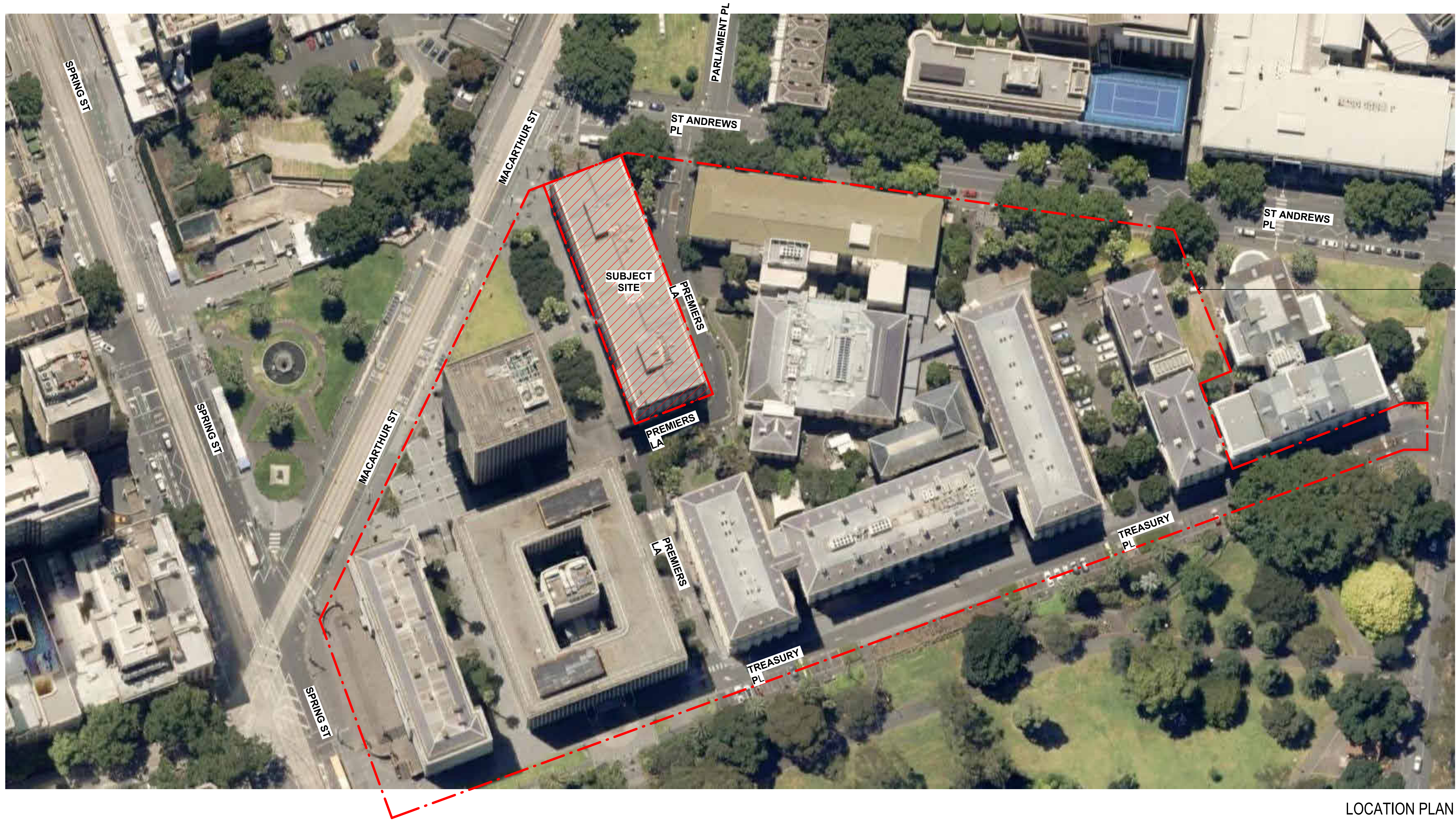


DRAWING LIST	
DRAWING NO	DRAWING NAME
HV00.00	COVER SHEET
HV00.01	GROUND FLOOR LEVEL - EXISTING / DEMOLITION PLAN
HV00.02	GROUND FLOOR LEVEL - PROPOSED WORKS PLAN
HV00.03	EXISTING / DEMOLITION ELEVATION
HV00.04	PROPOSED ELEVATION
HV00.05	ARTISTS IMPRESSION - EXISTING / DEMOLITION
HV00.06	ARTISTS IMPRESSION - PROPOSED WORKS
HV00.07	ARTISTS IMPRESSION - PROPOSED WORKS (SOUTHERN VIEW)



LOCATION PLAN
NTS

GRAY UKSAND

HERITAGE
VICTORIA ISSUE

COVER SHEET

DWG # **HV00.00** REV **HV01**
SCALE @ A1 1 : 1

DISCLAIMER

This document may not be secure, may be corrupted in transmission or due to software incompatibility and/or may be amended or altered by third parties after leaving Gray PukSand's possession.

Gray PukSand is not responsible for and accepts no liability for such matters. Subject only to any conflicting provision within any prior binding agreement by Gray PukSand (which agreement may also contain additional conditions relating to this document and its use).

- The content of this document is confidential and copyright in it belongs to Gray PukSand. They are permitted only to be opened, read and used by the addressee.
- All users of this document must carry out all relevant investigations and must examine, take advice as required and satisfy themselves concerning the contents, correctness and sufficiency of the attachment and its contents for their purposes.

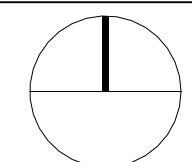
- To the extent permitted by law, all conditions and warranties concerning this document or any use to which they may be put (whether as to quality, outcome, fitness, care, skill or otherwise) whether express or implied by statute, common law, equity, trade custom or usage or otherwise are expressly excluded.
- Any person using or relying on this document releases indemnifies, and will keep indemnified, Gray PukSand against all claims, liabilities, loss, costs and expenses arising directly or indirectly out of or in connection with such use or reliance including without limitation any misrepresentation, error or defect in this document.

Contractors to use Architectural drawings for set out. Contractors to check & verify all Dimensions on Site prior to Construction/Fabrication. Figured Dimensions take precedence over Scaled Dimensions. Any Discrepancies should be immediately referred to the Architect. All work to comply with N.C.C. Statutory Authorities & Relevant Australian Standards. NSW Nominated Architects Scott Moylan 7147 Craig Saltmarsh 6569

Parliament
of Victoria

REV	DESCRIPTION	DATE
HV01	ISSUE FOR REVIEW	11.09.2024

PROJECT NO 124060
DRAWN SV
CHECKED PG
APPROVED EL



COMMITTEE HEARING
ROOMS
55 ST ANDREWS PLACE



VIEW 1 - WESTERN VIEW FROM MACARTHUR ST (EXISTING)



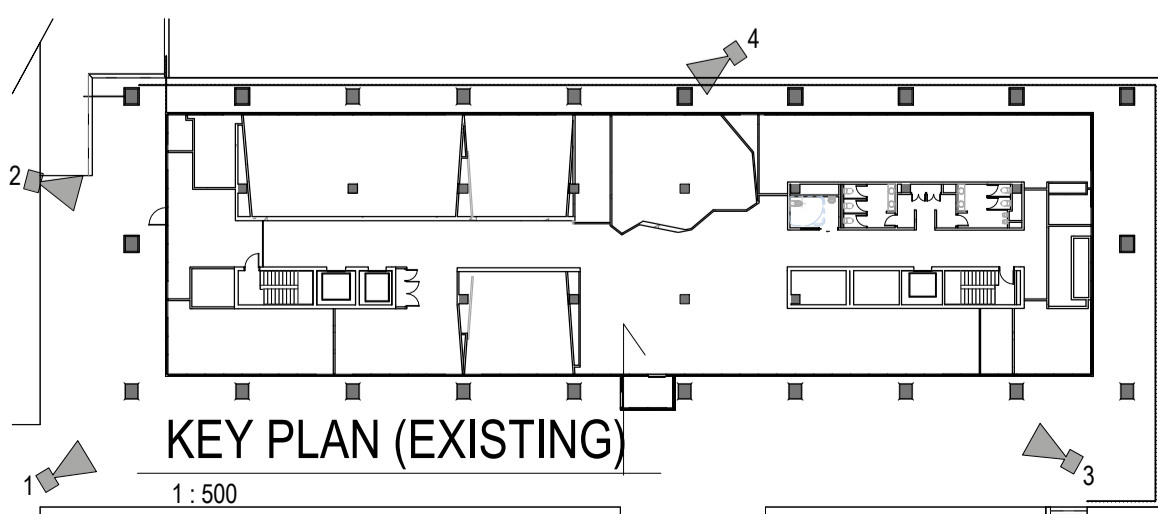
VIEW 2 - SOUTHERN VIEW FROM ST ANDREWS PL (EXISTING)



VIEW 3 - NORTHERN VIEW (EXISTING)



VIEW 4 - EASTERN VIEW FROM PREMIERS LA (EXISTING)



DISCLAIMER

This document may not be secure, may be corrupted in transmission or due to software incompatibility and/or may be amended or altered by third parties after leaving Gray Pukсанд's possession.

Gray Pukсанд is not responsible for and accepts no liability for such matters. Subject only to any conflicting provision within any prior binding agreement by Gray Pukсанд (which agreement may also contain additional conditions relating to this document and its use).

1. The content of this document is confidential and copyright in it belongs to Gray Pukсанд. They are permitted only to be opened, read and used by the addressee.
2. All users of this document must carry out all relevant investigations and must examine, take advice as required and satisfy themselves concerning the contents, correctness and sufficiency of the attachment and its contents for their purposes.

3. To the extent permitted by law, all conditions and warranties concerning this document or any use to which they may be put (whether as to quality, outcome, fitness, care, skill or otherwise) whether express or implied by statute, common law, equity, trade custom or usage or otherwise are expressly excluded.

4. Any person using or relying on this document releases indemnifies, and will keep indemnified, Gray Pukсанд against all claims, liabilities, loss, costs and expenses arising directly or indirectly out of or in connection with such use or reliance including without limitation any misrepresentation, error or defect in this document.

Contractors to use Architectural drawings for set out.
Contractors to check & verify all Dimensions on Site prior to Construction/Fabrication. Figured Dimensions take precedence over Scaled Dimensions.
Any Discrepancies should be immediately referred to the Architect.
All work to comply with N.C.C. Statutory Authorities & Relevant Australian Standards.
NSW Nominated Architects Scott Moylan 7147 Craig Saltmarsh 6569

Parliament
of Victoria

REV	DESCRIPTION	DATE
HV01	ISSUE FOR REVIEW	11.09.2024

PROJECT NO	124060
DRAWN	SV
CHECKED	PG
APPROVED	EL

COMMITTEE HEARING ROOMS
55 ST ANDREWS PLACE

GRAY UKSAND

HERITAGE VICTORIA ISSUE

ARTISTS IMPRESSION - EXISTING / DEMOLITION

DWG #	HV00.05	REV	HV01
SCALE @ A1	1 : 500		

Autodesk Docs://124060 - Parliament of Victoria/124060_CHR Project_C23.rvt



VIEW 1 - WESTERN VIEW FROM MACARTHUR ST (PROPOSED WORKS)



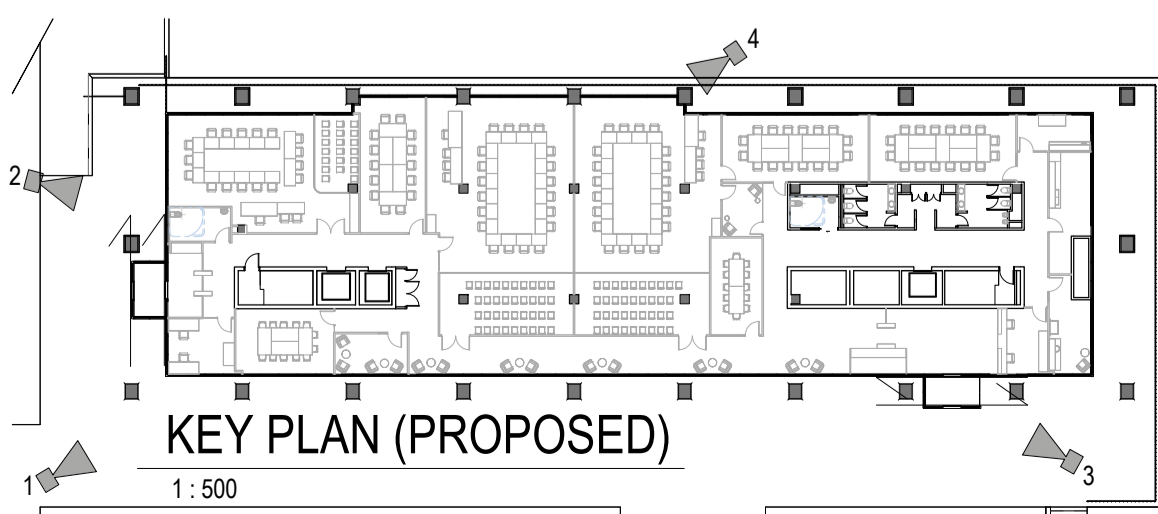
VIEW 2 - SOUTHERN VIEW FROM ST ANDREWS PL (PROPOSED WORKS)



VIEW 3 - NORTHERN VIEW (PROPOSED WORKS)



VIEW 4 - EASTERN VIEW FROM PREMIERS LA (PROPOSED WORKS)



DISCLAIMER

This document may not be secure, may be compiled in transmission or due to software incompatibility and/or may be amended or altered by third parties after leaving Gray Pukсанд's possession.

Gray Pukсанд is not responsible for and accepts no liability for such matters. Subject only to any conflicting provision within any prior binding agreement by Gray Pukсанд (which agreement may also contain additional conditions relating to this document and its use).

1. The content of this document is confidential and copyright in it belongs to Gray Pukсанд. They are permitted only to be opened, read and used by the addressee.
2. All users of this document must carry out all relevant investigations and must examine, take advice as required and satisfy themselves concerning the contents, correctness and sufficiency of the attachment and its contents for their purposes.

3. To the extent permitted by law, all conditions and warranties concerning this document or any use to which they may be put (whether as to quality, outcome, fitness, care, skill or otherwise) whether express or implied by statute, common law, equity, trade custom or usage or otherwise are expressly excluded.

4. Any person using or relying on this document releases indemnifies, and will keep indemnified, Gray Pukсанд against all claims, liabilities, loss, costs and expenses arising directly or indirectly out of or in connection with such use or reliance including without limitation any misrepresentation, error or defect in this document.

Contractors to use Architectural drawings for set out.
Contractors to check & verify all Dimensions on Site prior to Construction/Fabrication. Figured Dimensions take precedence over Scaled Dimensions.
Any Discrepancies should be immediately referred to the Architect.
All work to comply with N.C.C. Statutory Authorities & Relevant Australian Standards.
NSW Nominated Architects Scott Moylan 7147 Craig Saltmarsh 6569

Parliament
of Victoria

REV	DESCRIPTION	DATE
HV01	ISSUE FOR REVIEW	11.09.2024

PROJECT NO 124060
DRAWN SV
CHECKED PG
APPROVED EL

COMMITTEE HEARING ROOMS
55 ST ANDREWS PLACE

GRAY UKSAND

HERITAGE VICTORIA ISSUE

ARTISTS IMPRESSION - PROPOSED WORKS

DWG # **HV00.06** REV **HV01**
SCALE @ A1 1 : 500

Autodesk Docs://124060 - Parliament of Victoria/124060_CHR Project_C23.rvt

