

Design Development Report
Prepared by MGS Architects and SBLA Studio
May 2024

Footscray Community Arts Urban Realm

Design Development Report - RFI Response
Heritage Victoria



Above image The current scope of works for the urban realm and riverside landscape of the Master Plan.

Urban Realm / Performance Space
Existing view looking West



Urban Realm / Performance Space

Existing view looking East



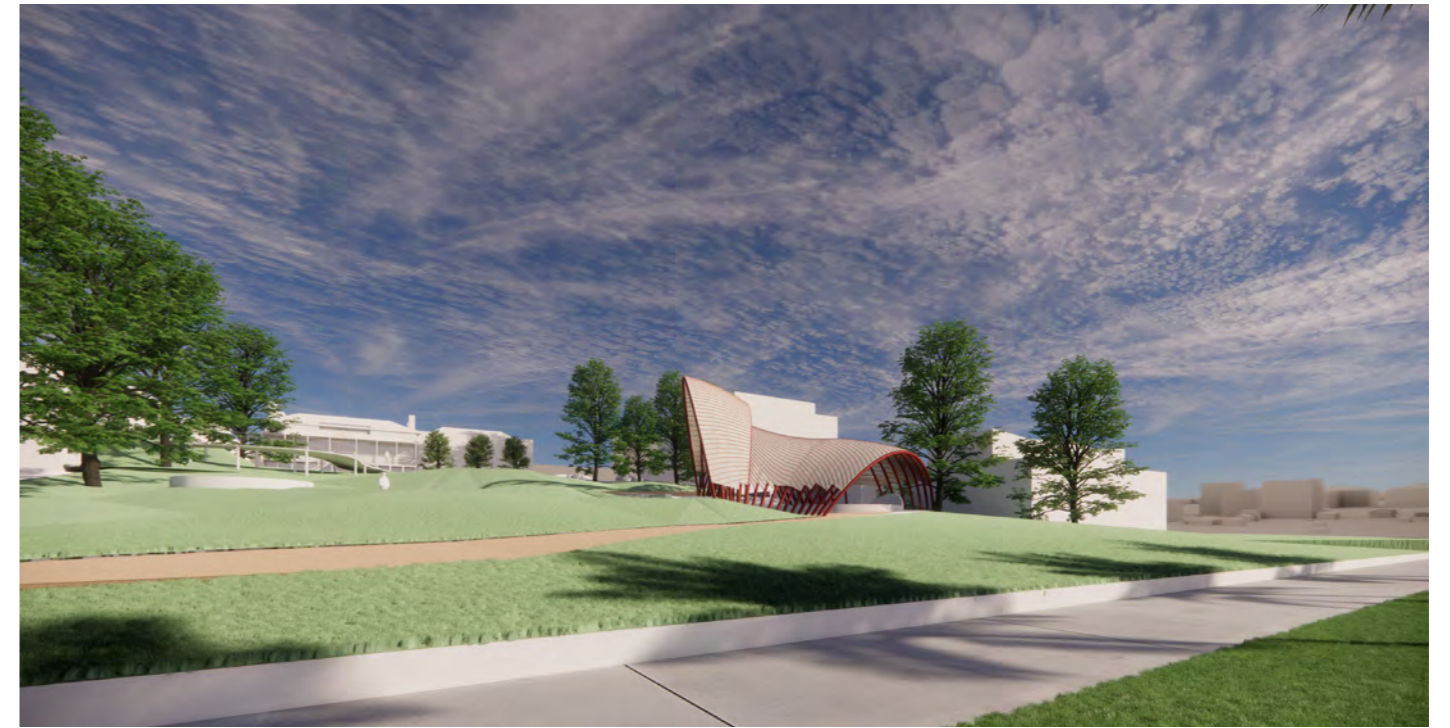
Urban Realm / Performance Space

Views from the riverside path looking West

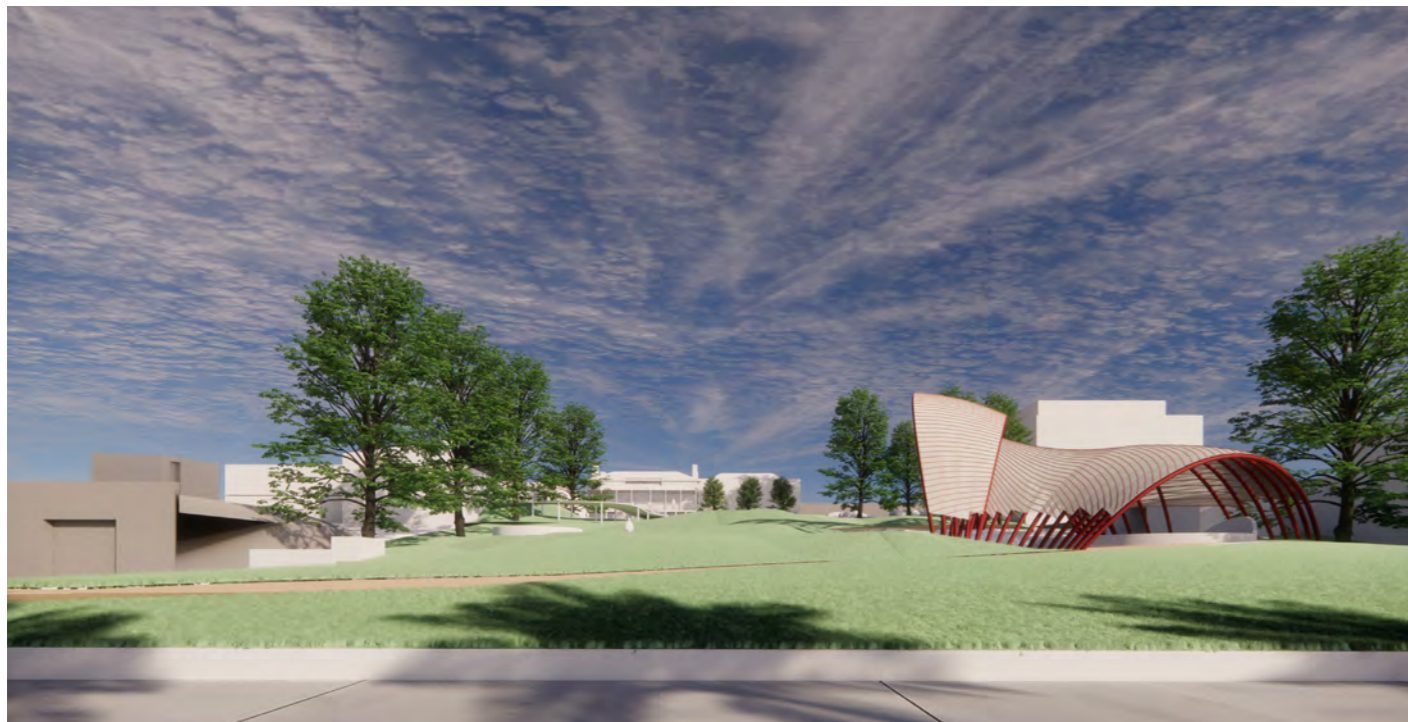
The siting of the amphitheatre to the far north-east of the site means that the chief east-west view line between Henderson House and the river will not be impacted. Henderson House will also remain a prominent element in views from the south-east.



View One



View Two

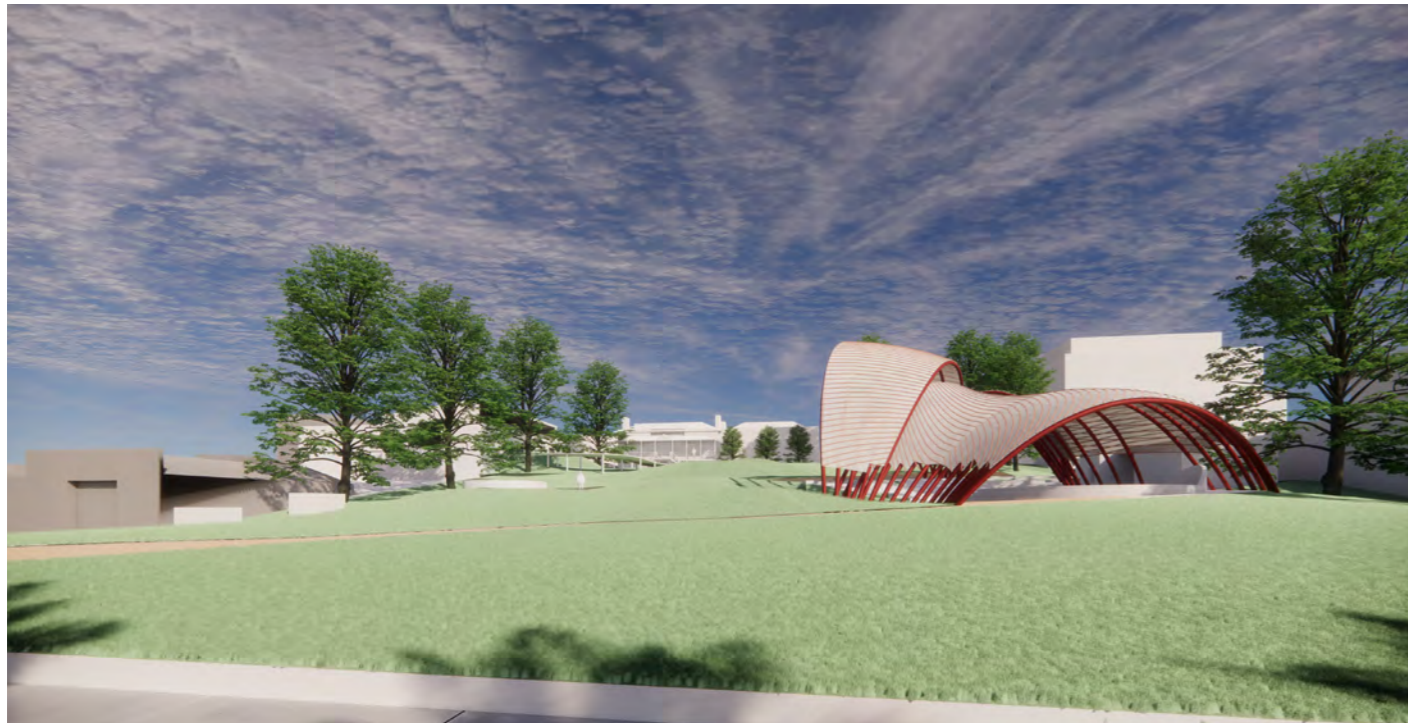


View Three

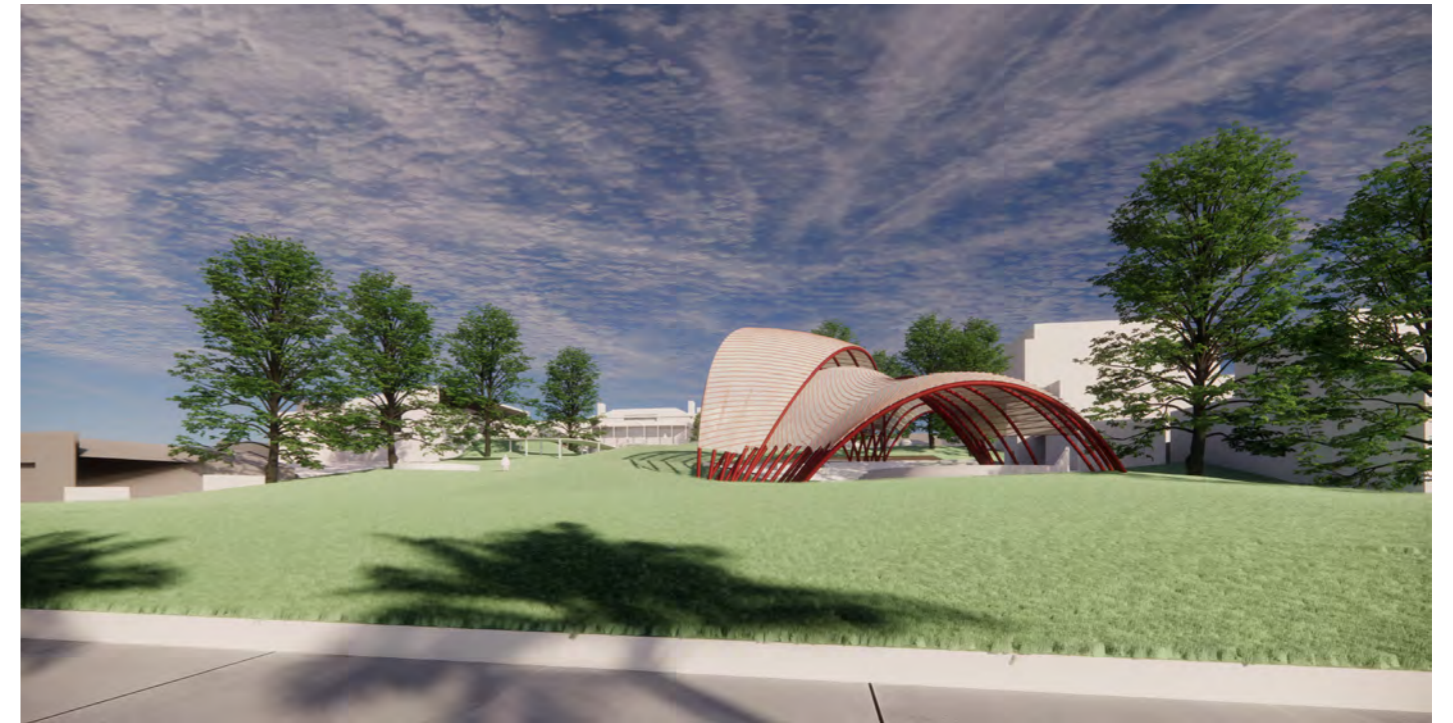
Urban Realm / Performance Space

Views from the riverside path looking West

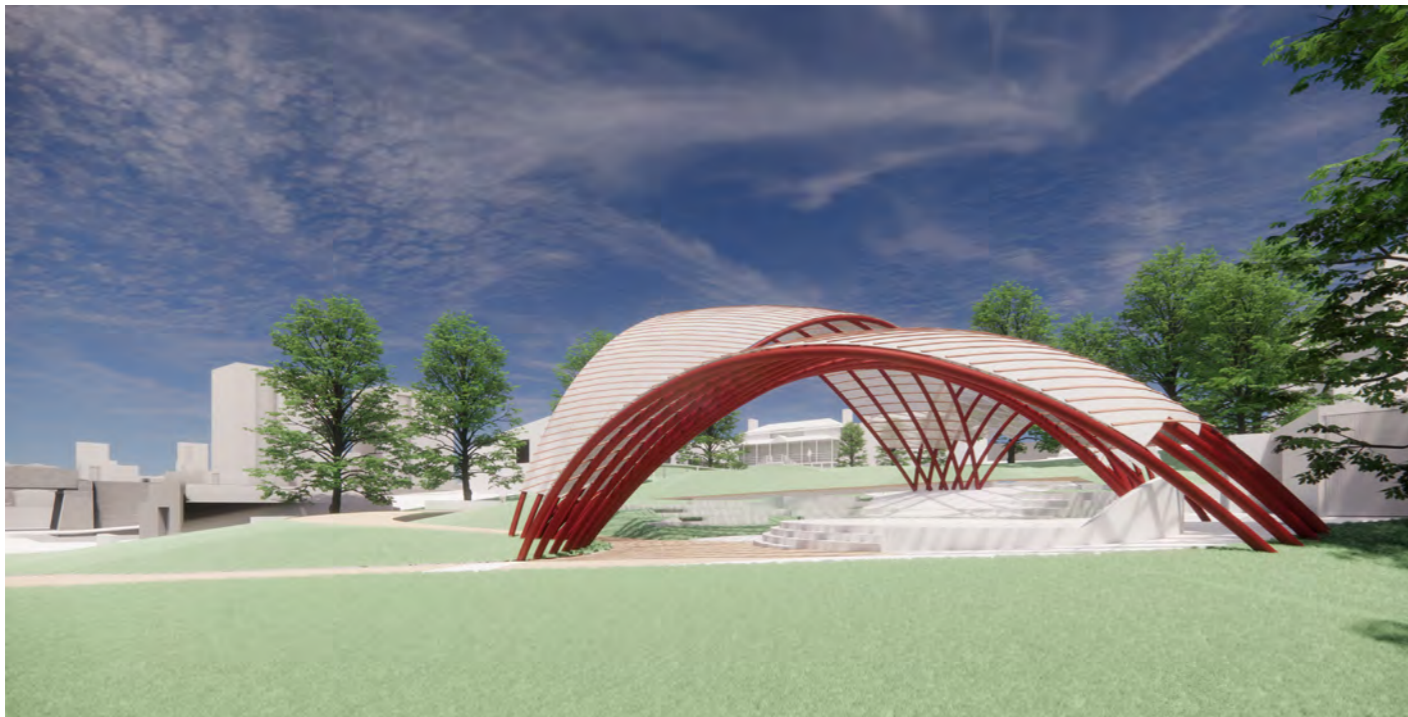
There is limited impact on some view lines from the north-east, however the impacts are mitigated by the considerable distance between the heritage building and the new works, and the visual permeability offered by the considered design and materiality of the canopy.



View Four



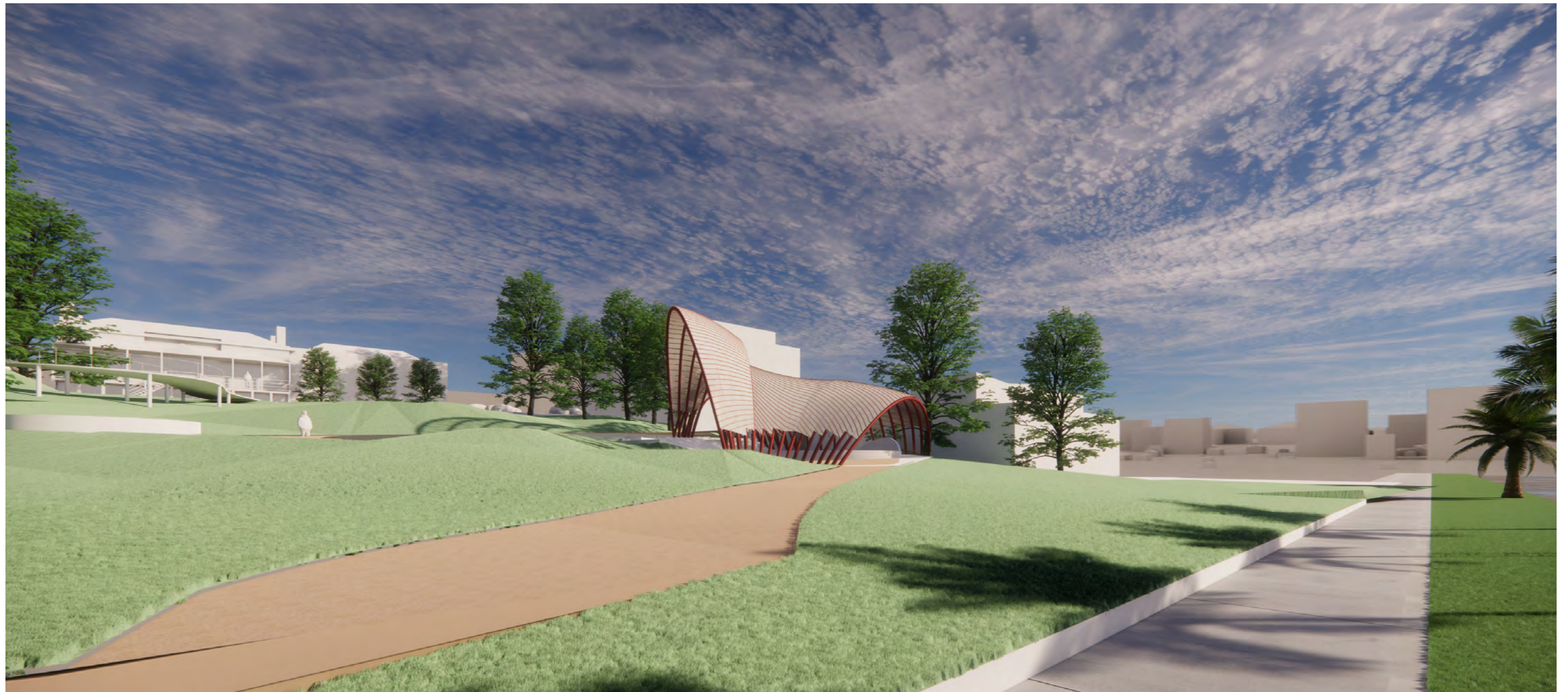
View Five



View Six

Urban Realm / Performance Space

Concept view looking West

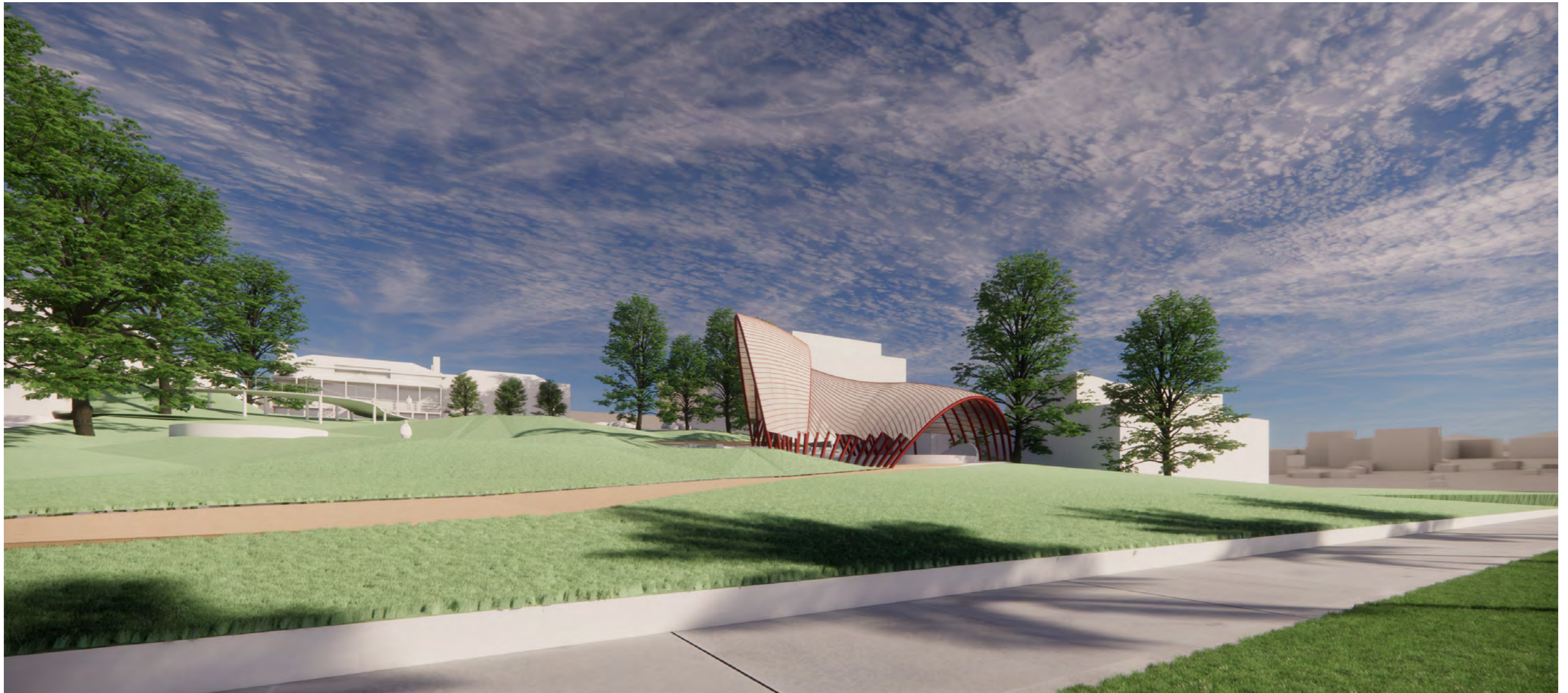


View One



Urban Realm / Performance Space

Concept view looking West

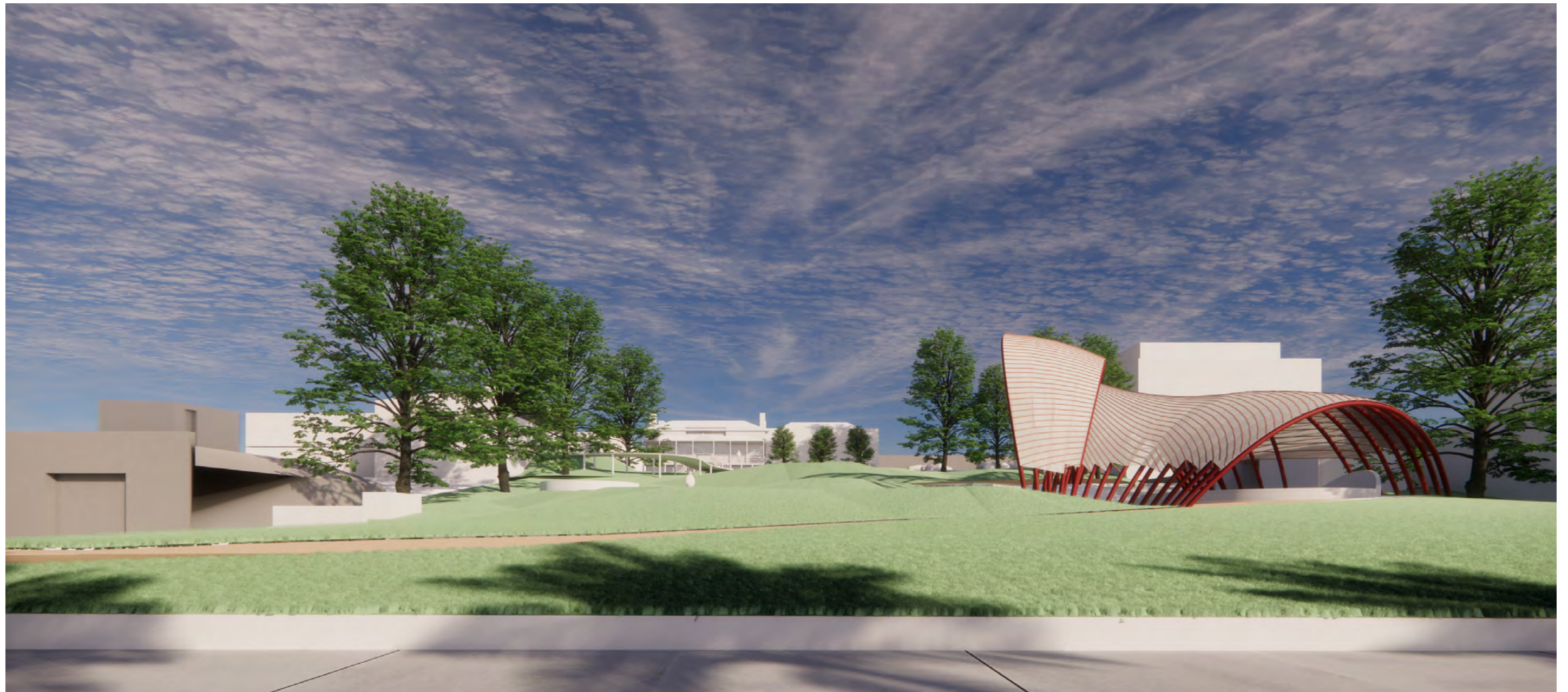


View Two



Urban Realm / Performance Space

Concept view looking West

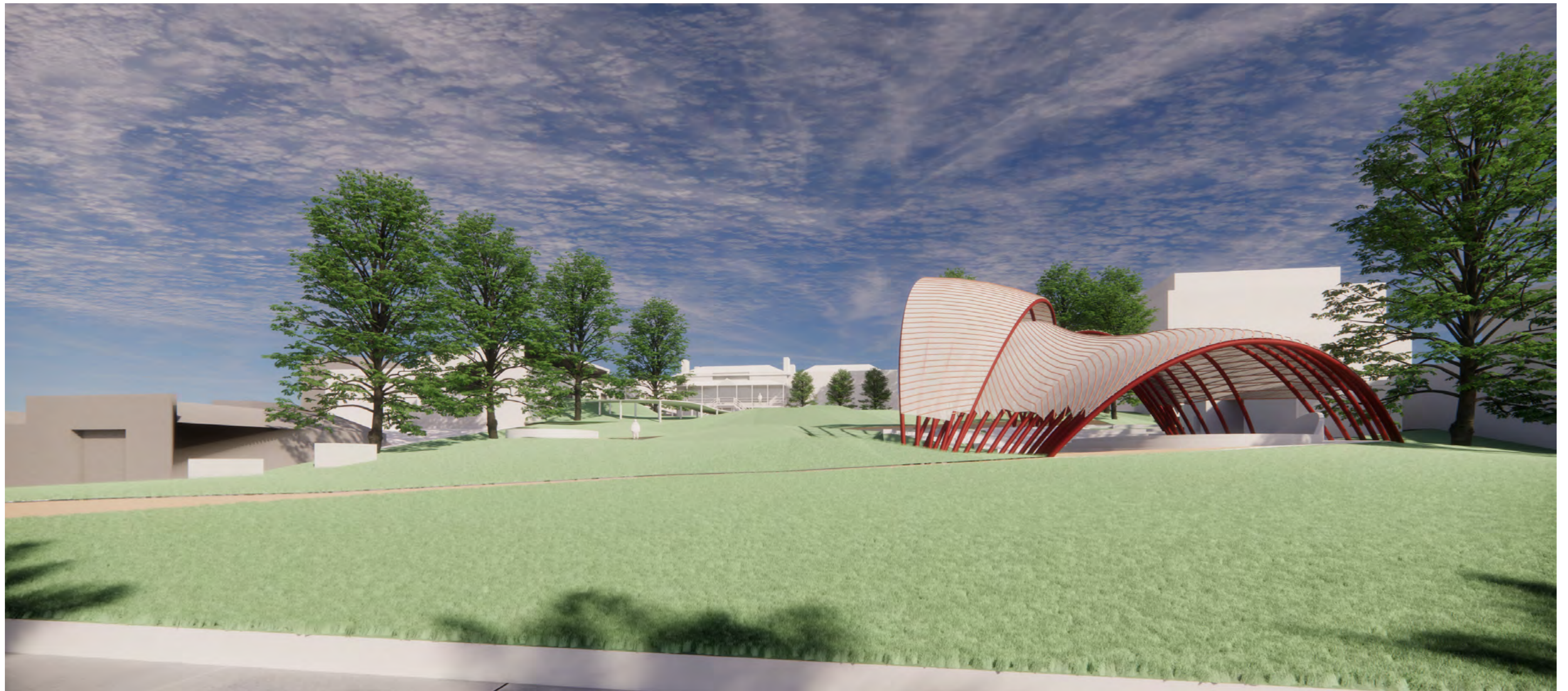


View Four



Urban Realm / Performance Space

Concept view looking West

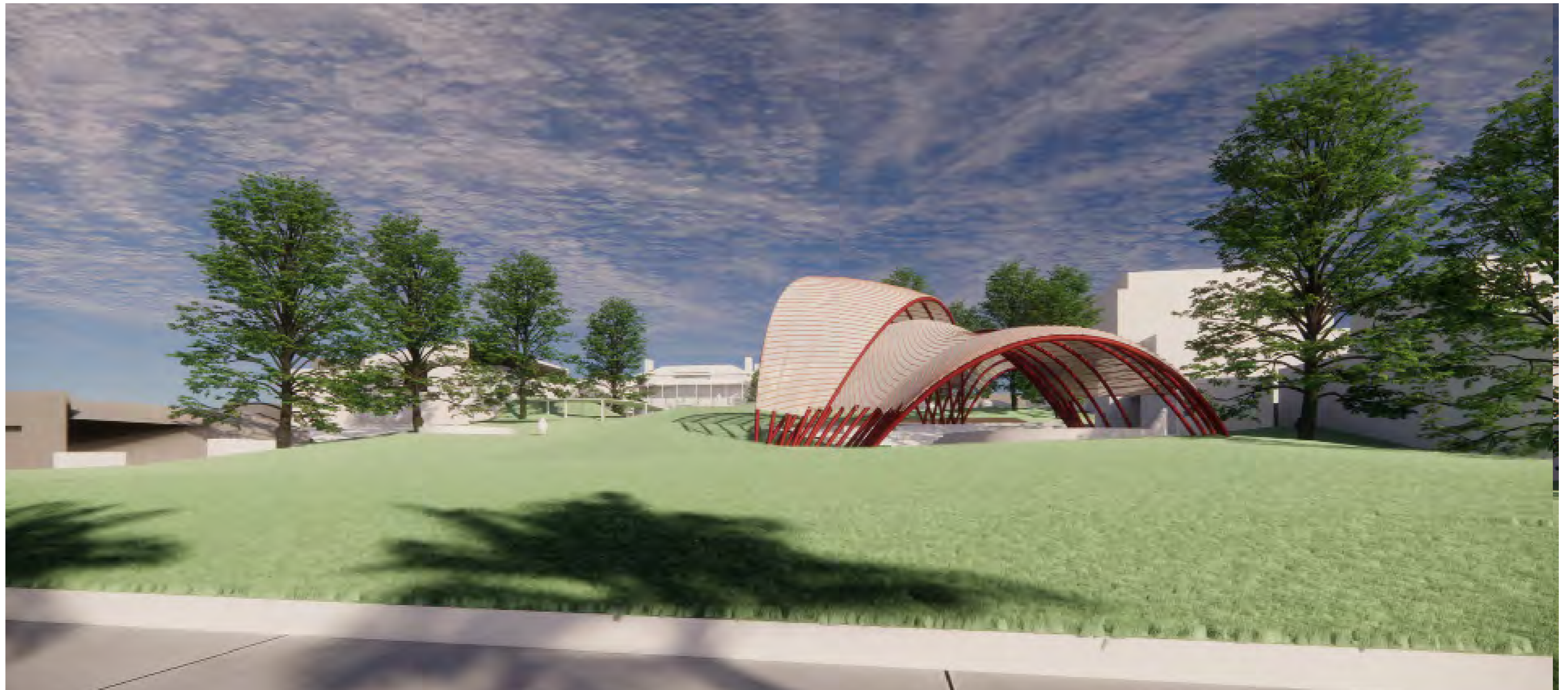


View Five



Urban Realm / Performance Space

Concept view looking Northwest

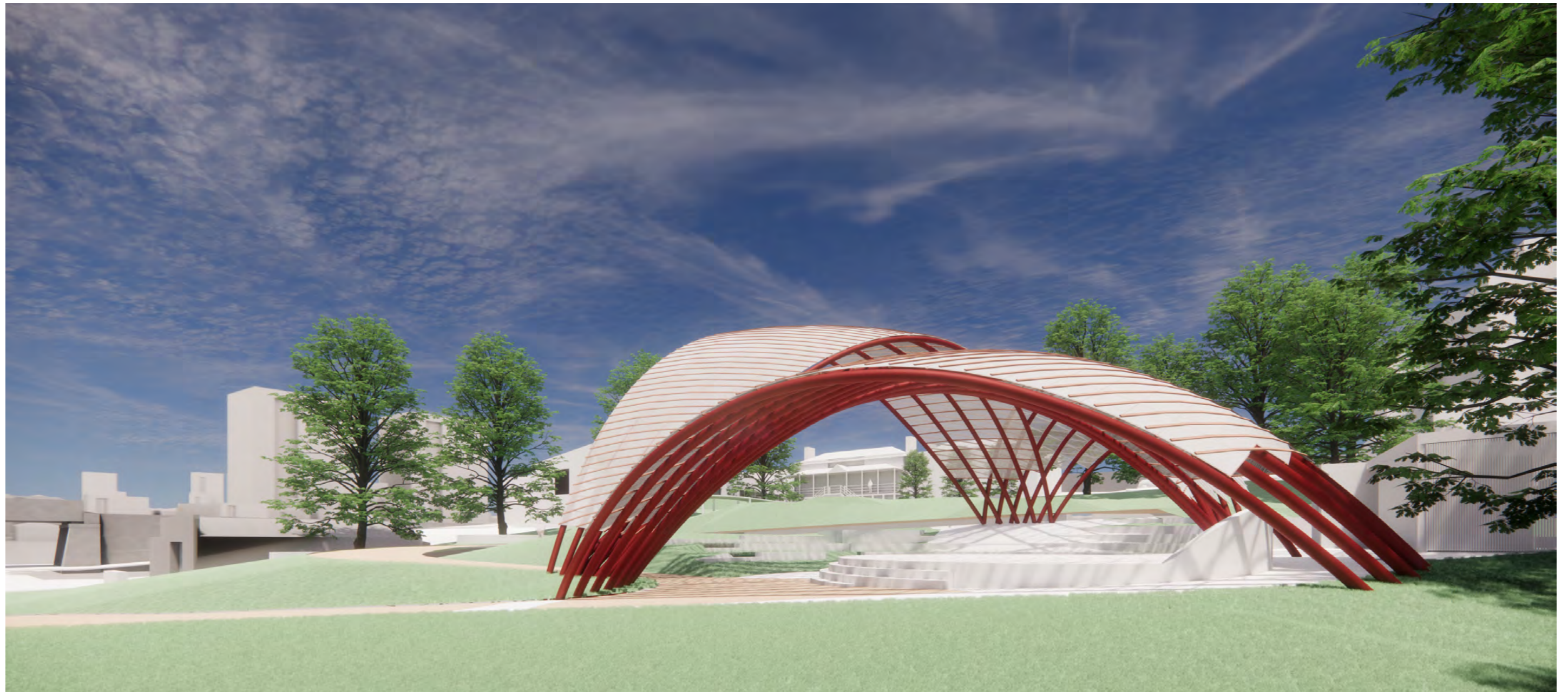


View Six



Urban Realm / Performance Space

Concept view looking Southwest



View Eight



Urban Realm / Performance Space

Material Palette - Canopy, Amenity Building and Performance Area

The exterior palette draws both on the tones, textures and patterns of the surrounding environment. The focus is on materials that are gentle to the eye, humanly scaled, durable and muted in colour.

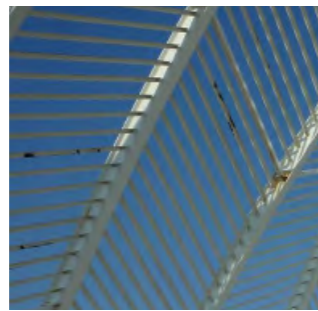
They have been selected for qualities that include sustainability, longevity, durability, ease of maintenance, procurement and cost.

Two types of cladding are proposed for the canopy structure. It is intended that the final choice be determined as a condition of permit, as the detail design is to be undertaken by others (fabricator and artist yet to be appointed).

Canopy Structure



ST-1 Tubular Steel Primary Supports

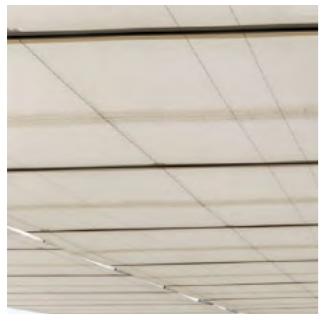


ST-1 Tubular Steel Supports

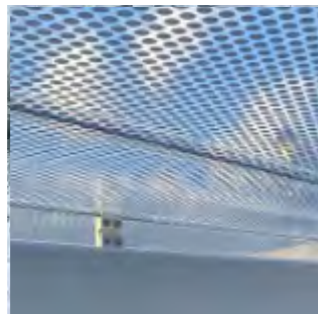


Applied paint finish - Earth tones (Exact Colour TBD)

Canopy Cladding - Primary waterproof*



CC-01 Polycarbonate or Polyethylene Cladding



CC-01 ETFE with frit pattern



CC-01 Printed Image on Panel



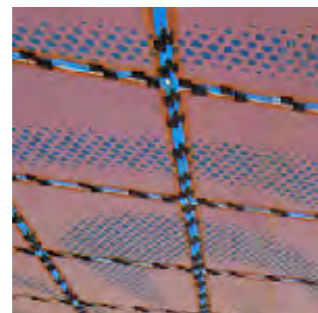
CC-01 Printed ETFE

*Exact Specification TBD. The main cladding layer will be a watertight polycarbonate/polyethylene cladding with the potential for a printed pattern. The design will be developed with a select fabricator.

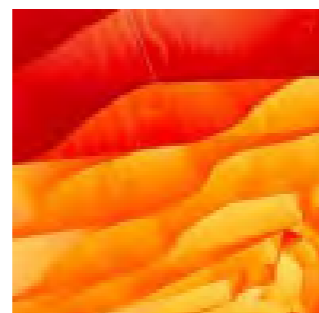
Canopy Cladding - Secondary shading*



CC-02 Woven Timber Layer



CC-02 Printed Mesh Fabric



CC-02 Stretched Fabric

*Exact Specification TBD. A secondary layer of cladding through artist integration, with woven or fabric materials.

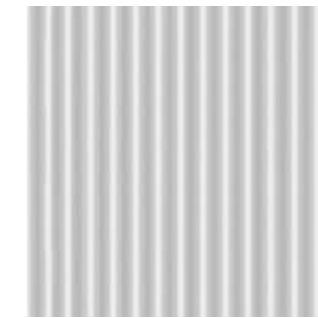
Amenity Building



CWB-01 Concrete Block with rendered finish



MC-01 Metal Paneling

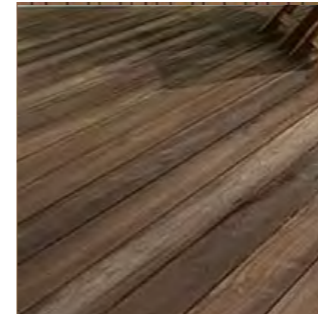


RF-01 Colour bond metal roofing



RF-01 Colourbond Metal Roofing (Exact Colour TBD)

Performance Stage and Surrounds



SF-01 Exterior timber decking

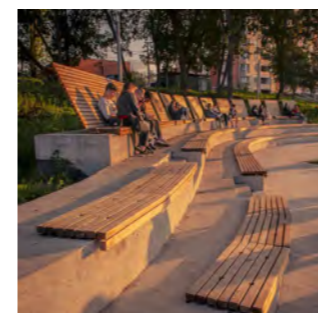


POV-02 Exposed aggregate seeded with contrasting



POV-05 Compacted Gravel

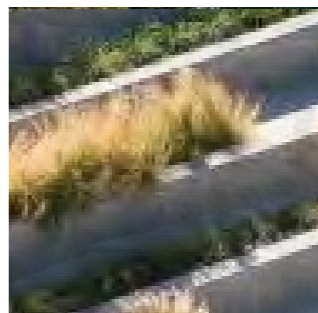
Performance Seating



FN-00 Timber Seating Applied to Concrete tiers



CON-01 Concrete Tiered Seating



CON-01 Planted tiers within concrete

Urban Realm / Performance Space

Material Palette - Landscape and Pathway

The exterior palette draws both on the tones, textures and patterns of the surrounding environment.

Main Pathway



POV-01 Exposed Aggregate



POV-02 Exposed Aggregate seeded with contrasting colour

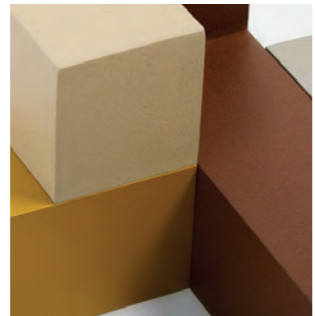


POV-03 Feature Path Edging - re-purposed bluestone

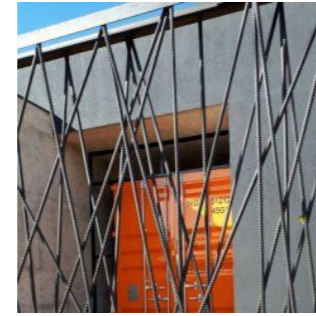
Entry Deck and Raised Pathway



SF-01 Timber Board surface

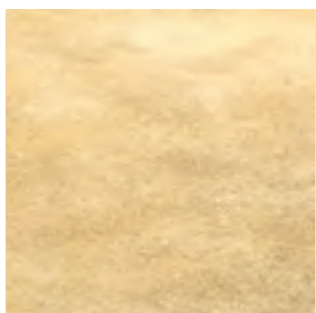


ST-02 Painted Steel Structure Earthy Tones (Exact Colour TBD)



ST-03 Timber Balustrade

Other Surface Materials



POV-05 Granicrete or Stabilised Gravel



POV-06 Bluestone Billet Pavers

Seating Areas



FN-01 Timber Seating Applied to Concrete

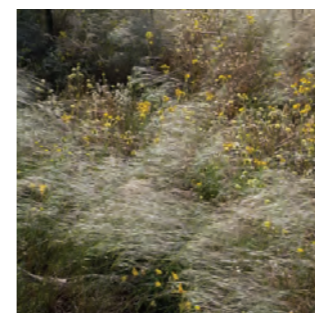


FN-02 Cut top boulders

Planting



Planting Character



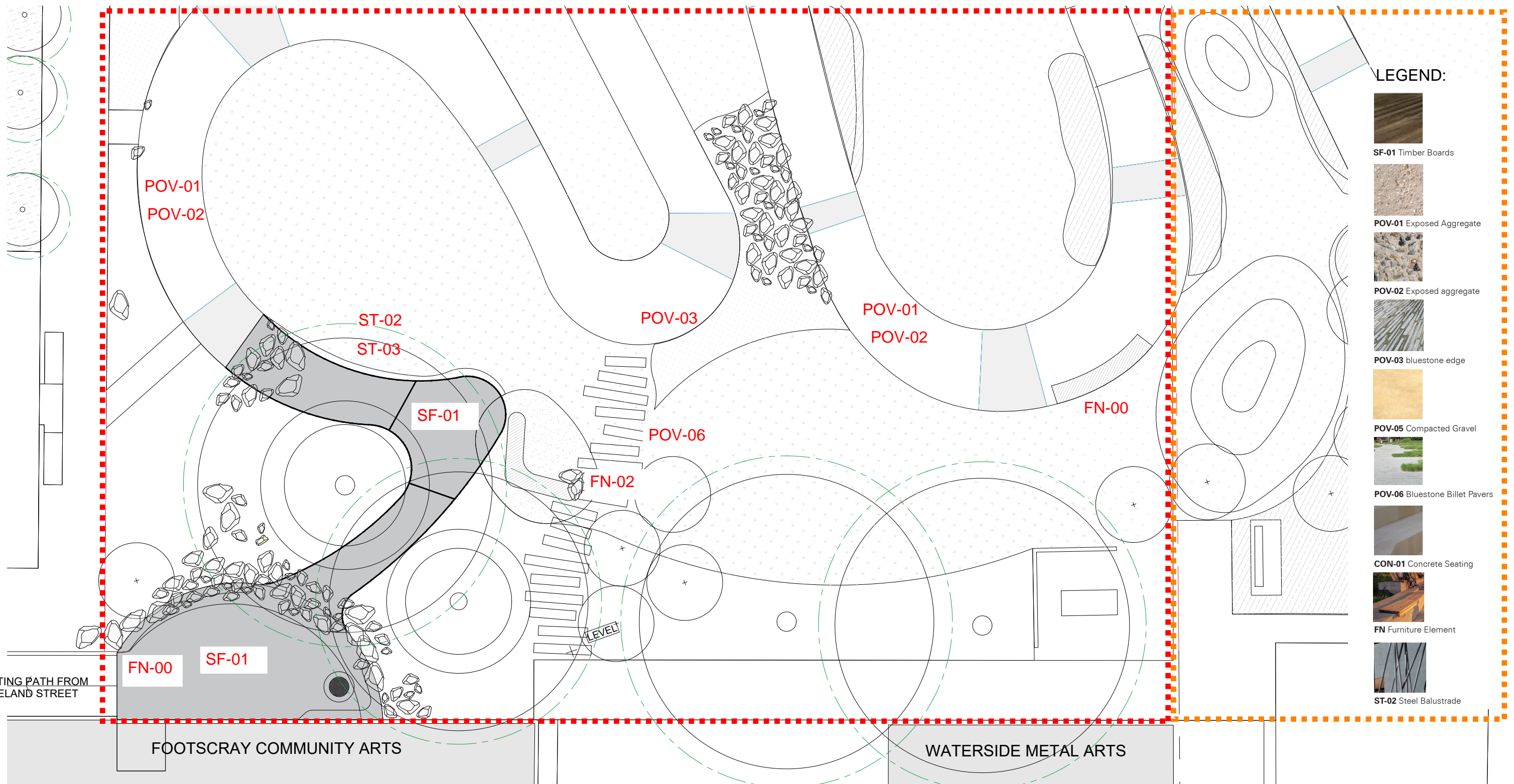
Planting Character





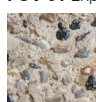
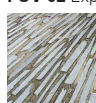
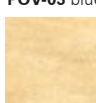

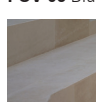
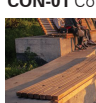
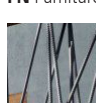
Planting Character

ZONE OF WORKS

COUNCIL LAND



LEGEND:

-  **SF-01** Timber Boards
-  **POV-01** Exposed Aggregate
-  **POV-02** Exposed aggregate
-  **POV-03** bluestone edge
-  **POV-05** Compacted Gravel
-  **POV-06** Bluestone Billet Pavers
-  **CON-01** Concrete Seating
-  **FN** Furniture Element
-  **ST-02** Steel Balustrade

ENLARGED PLAN AT PLATFORM MATERIALS
1:200

REVISIONS		
P1	XX.XX.XX	PRELIMINARY
		XX

PROJECT
FOOTSCRAY COMMUNITY ARTS
URBAN REALM

PROJECT NUMBER
23022

CLIENT
FCA

DRAWING TITLE
FLOOR PLAN
AT PLATFORM

DRAWN BY
MR

CHECKED BY
JW

DATE
MARCH 05, 2024

SCALE
1:200 @ A3



DRAWING NUMBER
TP 212

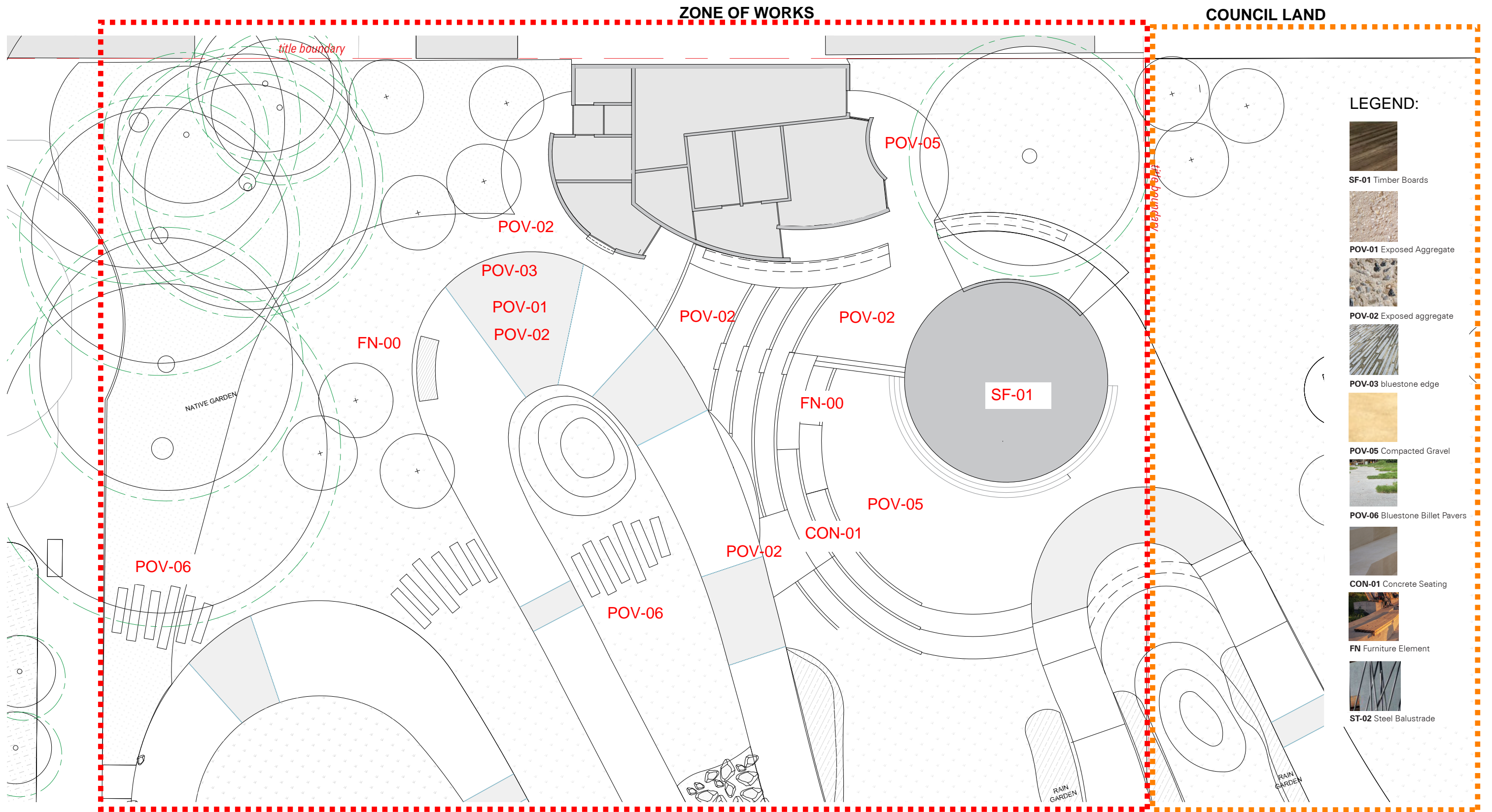
REVISION
--

TOWN PLANNING ISSUE

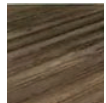

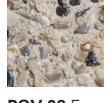



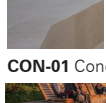
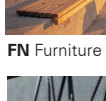

REPRODUCTION OF THE WHOLE OR PART OF THIS DOCUMENT CONSTITUTES AN INFRINGEMENT OF COPYRIGHT. THE INFORMATION, IDEAS AND CONCEPTS CONTAINED IN THIS DOCUMENT ARE CONFIDENTIAL. THE RECIPIENT(S) OF THIS DOCUMENT IS PROHIBITED FROM DISCLOSING SUCH INFORMATION, IDEAS AND CONCEPTS TO ANY PERSON WITHOUT THE PRIOR WRITTEN CONSENT OF MGS ARCHITECTS PTY LTD.

MGS ARCHITECTS PTY LTD ABN 13 006 488 302 | MGSARCHITECTS.COM.AU
10-22 MANTON LANE MELBOURNE 3000 AUSTRALIA | T +61 3 9670 1800





LEGEND:

-  **SF-01** Timber Boards
-  **POV-01** Exposed Aggregate
-  **POV-02** Exposed aggregate
-  **POV-03** bluestone edge
-  **POV-05** Compacted Gravel
-  **POV-06** Bluestone Billet Pavers
-  **CON-01** Concrete Seating
-  **FN** Furniture Element
-  **ST-02** Steel Balustrade

PROPOSED GROUND FLOOR PLAN - MATERIALS
1:200

REVISIONS	
P1 XX.XX.XX PRELIMINARY	XX

PROJECT FOOTSCRAY COMMUNITY ARTS URBAN REALM
--

PROJECT NUMBER 23022

CLIENT FCA

DRAWING TITLE FLOOR PLAN PERFORMANCE SPACE
--

DRAWN BY MR

CHECKED BY JW

DATE MARCH 05, 2024

SCALE 1:200 @ A3



DRAWING NUMBER TP 213

REVISION --

TOWN PLANNING ISSUE

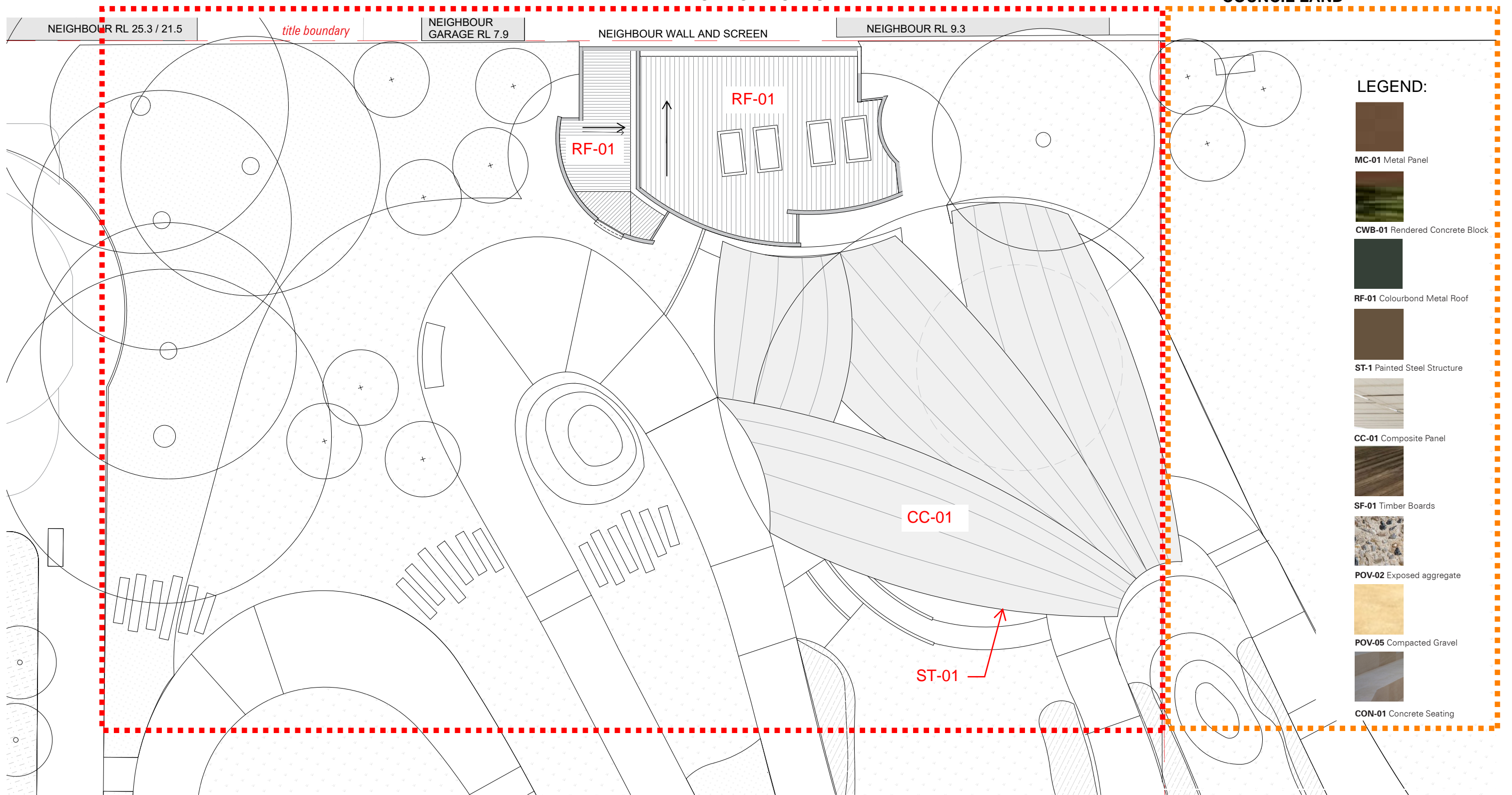
REPRODUCTION OF THE WHOLE OR PART OF THIS DOCUMENT CONSTITUTES AN INFRINGEMENT OF COPYRIGHT. THE INFORMATION, IDEAS AND CONCEPTS CONTAINED IN THIS DOCUMENT ARE CONFIDENTIAL. THE RECIPIENT(S) OF THIS DOCUMENT IS PROHIBITED FROM DISCLOSING SUCH INFORMATION, IDEAS AND CONCEPTS TO ANY PERSON WITHOUT THE PRIOR WRITTEN CONSENT OF MGS ARCHITECTS PTY LTD.

MGS ARCHITECTS PTY LTD ABN 13 006 488 302 | MGSARCHITECTS.COM.AU
10-22 MANTON LANE MELBOURNE 3000 AUSTRALIA | T +61 3 9670 1800





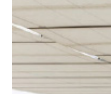
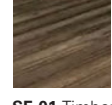
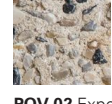

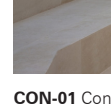


ZONE OF WORKS

COUNCIL LAND



LEGEND:

-  **MC-01** Metal Panel
-  **CWB-01** Rendered Concrete Block
-  **RF-01** Colourbond Metal Roof
-  **ST-1** Painted Steel Structure
-  **CC-01** Composite Panel
-  **SF-01** Timber Boards
-  **POV-02** Exposed aggregate
-  **POV-05** Compacted Gravel
-  **CON-01** Concrete Seating

NOTE: Two types of cladding are proposed for the canopy structure. It is intended that the final choice be determined as a condition of permit, as the detail design is to be undertaken by others (fabricator and artist yet to be appointed).

PROPOSED ROOF PLAN - MATERIALS
1:200

REVISIONS	
P1 XX.XX.XX PRELIMINARY	XX

PROJECT	FOOTSCRAY COMMUNITY ARTS URBAN REALM
---------	--------------------------------------

PROJECT NUMBER	23022
----------------	-------

CLIENT	FCA
--------	-----

DRAWING TITLE	ROOF PLAN
---------------	-----------

DRAWN BY	MR
----------	----

CHECKED BY	JW
------------	----

DATE	MARCH 05, 2024
------	----------------

SCALE	1:200 @ A3
-------	------------



DRAWING NUMBER	TP 214
----------------	--------

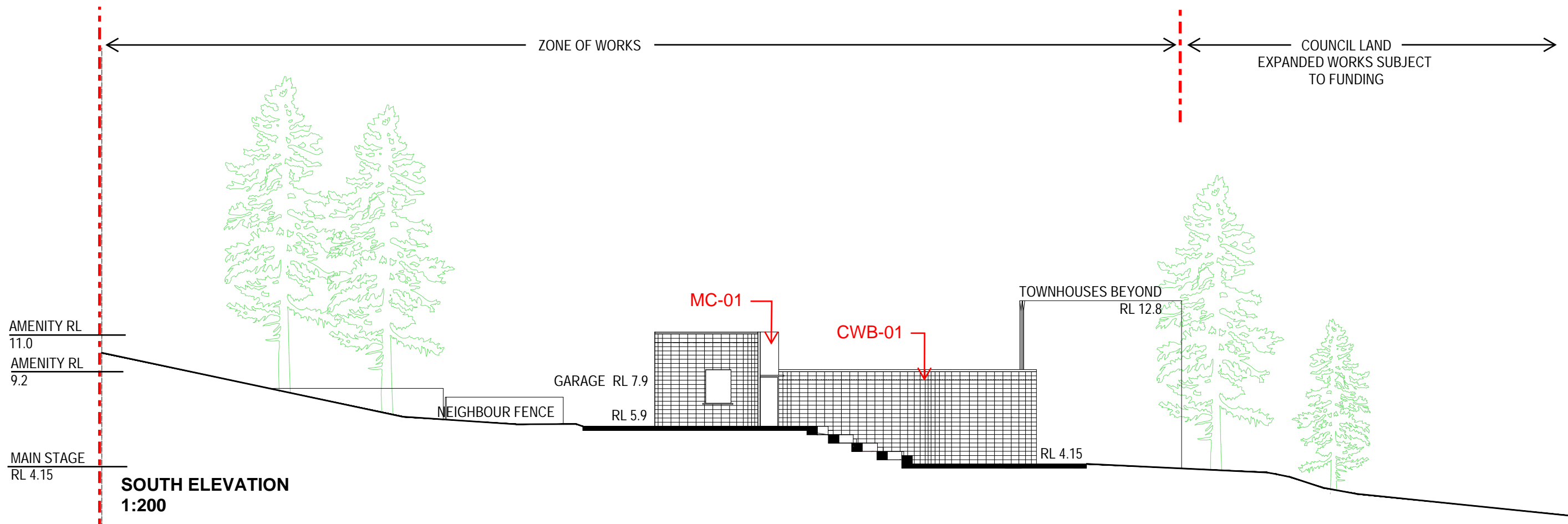
REVISION	--
----------	----

TOWN PLANNING ISSUE

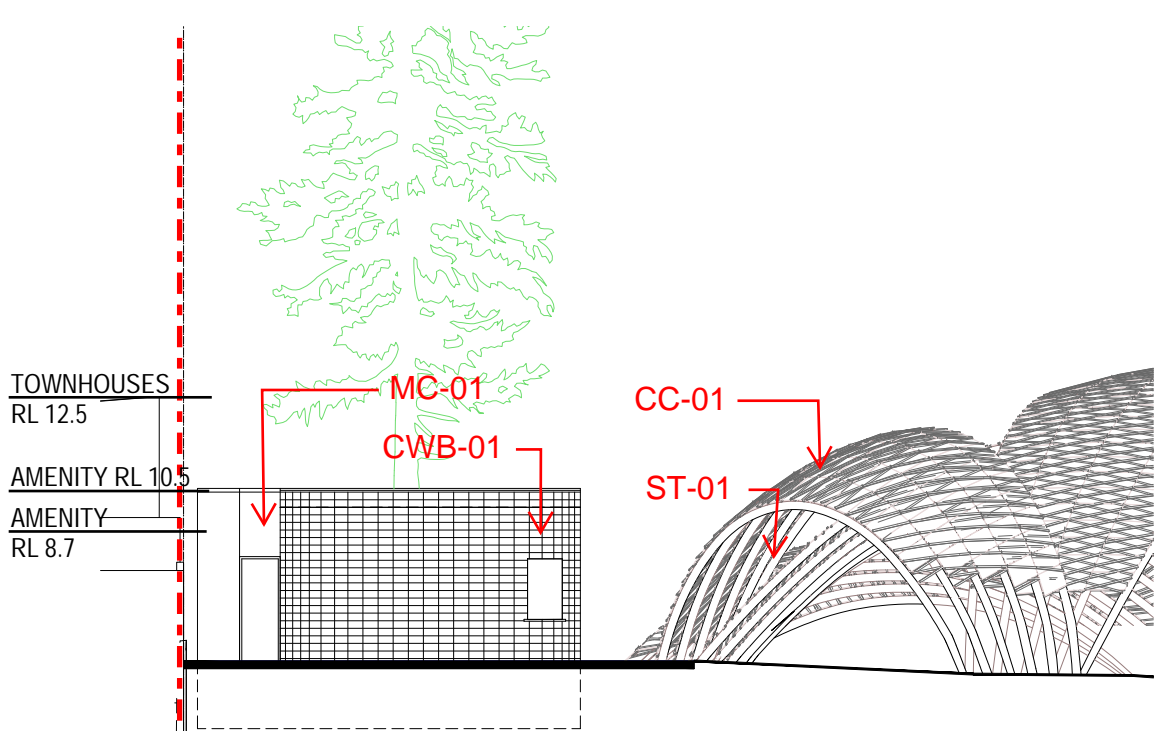
REPRODUCTION OF THE WHOLE OR PART OF THIS DOCUMENT CONSTITUTES AN INFRINGEMENT OF COPYRIGHT. THE INFORMATION, IDEAS AND CONCEPTS CONTAINED IN THIS DOCUMENT ARE CONFIDENTIAL. THE RECIPIENT(S) OF THIS DOCUMENT IS PROHIBITED FROM DISCLOSING SUCH INFORMATION, IDEAS AND CONCEPTS TO ANY PERSON WITHOUT THE PRIOR WRITTEN CONSENT OF MGS ARCHITECTS PTY LTD.

MGS ARCHITECTS PTY LTD ABN 13 006 488 302 | MGSARCHITECTS.COM.AU
10-22 MANTON LANE MELBOURNE 3000 AUSTRALIA | T +61 3 9670 1800

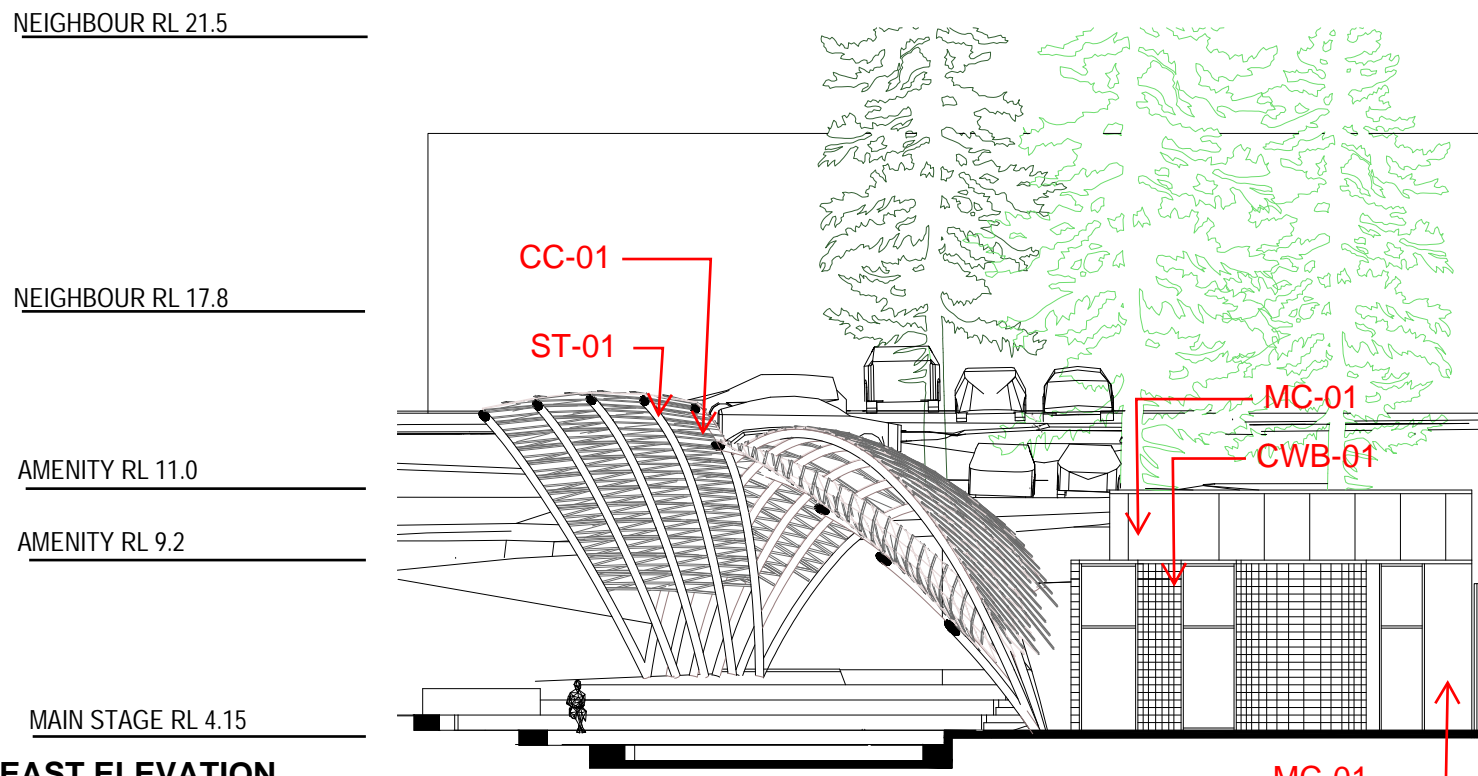




SOUTH ELEVATION
1:200





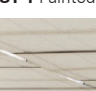






WEST ELEVATION
1:200



EAST ELEVATION
1:200

LEGEND:

-  MC-01 Metal Panel
-  CWB-01 Rendered Concrete Block
-  RF-01 Colourbond Metal Roof
-  ST-1 Painted Steel Structure
-  CC-01 Composite Panel
-  SF-01 Timber Boards
-  POV-02 Exposed aggregate
-  POV-05 Compacted Gravel
-  CON-01 Concrete Seating

REVISIONS	PROJECT
P1 XX.XX.XX PRELIMINARY XX	FOOTSCRAY COMMUNITY ARTS URBAN REALM

PROJECT
FOOTSCRAY COMMUNITY ARTS
URBAN REALM

PROJECT NUMBER
23022

CLIENT
FCA

DRAWING TITLE
AMENITY ELEVATIONS

DRAWN BY
MR

CHECKED BY
JW

DATE
MARCH 05, 2024

SCALE
1:200 @ A3

DRAWING NUMBER
TP 411

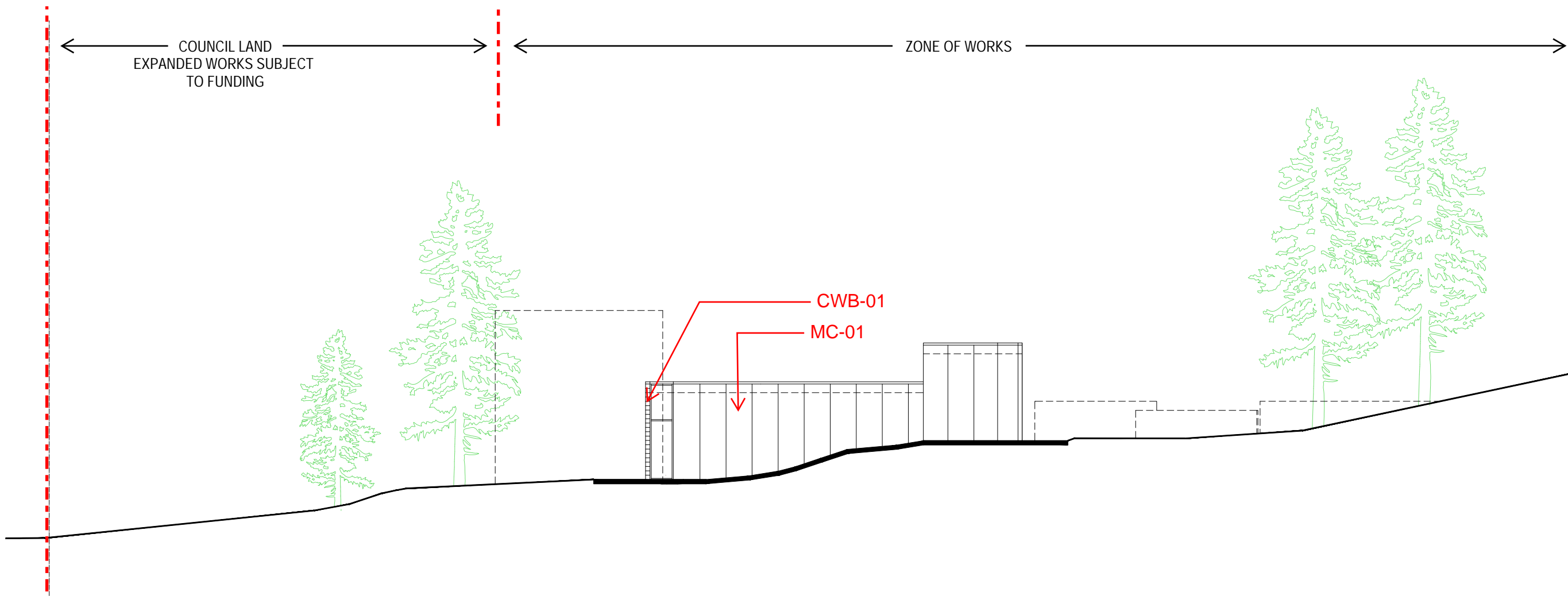
REVISION
--

TOWN PLANNING ISSUE



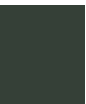






REPRODUCTION OF THE WHOLE OR PART OF THIS DOCUMENT CONSTITUTES AN INFRINGEMENT OF COPYRIGHT. THE INFORMATION, IDEAS AND CONCEPTS CONTAINED IN THIS DOCUMENT ARE CONFIDENTIAL. THE RECIPIENT(S) OF THIS DOCUMENT IS PROHIBITED FROM DISCLOSING SUCH INFORMATION, IDEAS AND CONCEPTS TO ANY PERSON WITHOUT THE PRIOR WRITTEN CONSENT OF MGS ARCHITECTS PTY LTD.

MGS ARCHITECTS PTY LTD ABN 13 006 488 302 | MGSARCHITECTS.COM.AU
10-22 MANTON LANE MELBOURNE 3000 AUSTRALIA | T +61 3 9670 1800





LEGEND:

-  **MC-01** Metal Panel
-  **CWB-01** Rendered Concrete Block
-  **RF-01** Colourbond Metal Roof
-  **ST-1** Painted Steel Structure
-  **CC-01** Composite Panel
-  **SF-01** Timber Boards
-  **POV-02** Exposed aggregate
-  **POV-05** Compacted Gravel
-  **CON-01** Concrete Seating

REVISIONS		
P1	XX.XX.XX	PRELIMINARY
		XX

PROJECT
**FOOTSCRAY COMMUNITY ARTS
 URBAN REALM**

PROJECT NUMBER
23022

CLIENT
FCA

DRAWING TITLE
AMENITY ELEVATIONS

DRAWN BY
MR

CHECKED BY
JW

DATE
MARCH 05, 2024

SCALE
1:200 @ A3

DRAWING NUMBER
TP 412

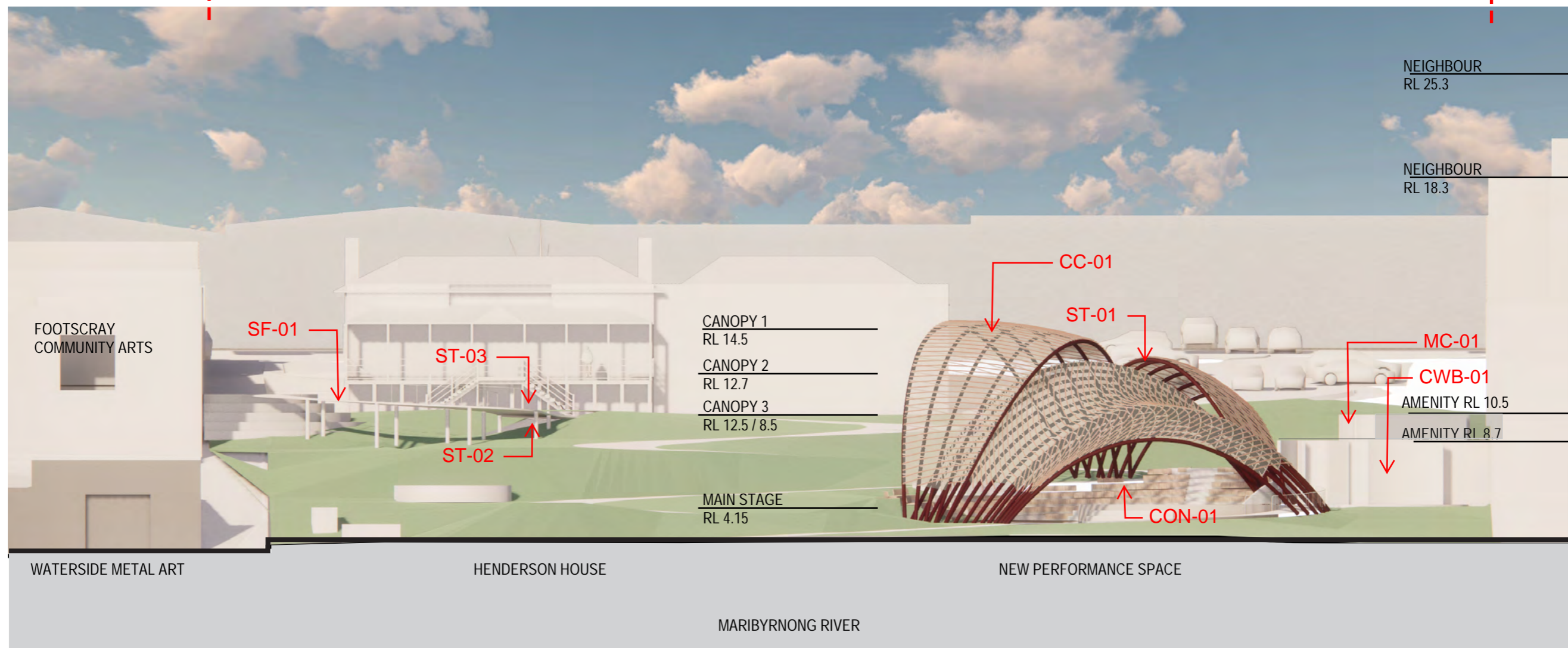
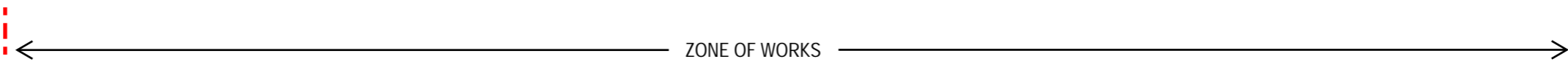
REVISION
--

TOWN PLANNING ISSUE








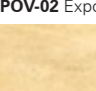

REPRODUCTION OF THE WHOLE OR PART OF THIS DOCUMENT CONSTITUTES AN INFRINGEMENT OF COPYRIGHT. THE INFORMATION, IDEAS AND CONCEPTS CONTAINED IN THIS DOCUMENT ARE CONFIDENTIAL. THE RECIPIENT(S) OF THIS DOCUMENT IS PROHIBITED FROM DISCLOSING SUCH INFORMATION, IDEAS AND CONCEPTS TO ANY PERSON WITHOUT THE PRIOR WRITTEN CONSENT OF MGS ARCHITECTS PTY LTD.

MGS ARCHITECTS PTY LTD ABN 13 006 488 302 | MGSARCHITECTS.COM.AU
 10-22 MANTON LANE MELBOURNE 3000 AUSTRALIA | T +61 3 9670 1800





LEGEND:

-  **MC-01** Metal Panel
-  **CWB-01** Rendered Concrete Block
-  **RF-01** Colourbond Metal Roof
-  **ST-1** Painted Steel Structure
-  **CC-01** Composite Panel
-  **SF-01** Timber Boards
-  **POV-02** Exposed aggregate
-  **POV-05** Compacted Gravel
-  **CON-01** Concrete Seating

SITE SECTION LOOKING WEST

NOTE: Two types of cladding are proposed for the canopy structure. It is intended that the final choice be determined as a condition of permit, as the detail design is to be undertaken by others (fabricator and artist yet to be appointed).

REVISIONS

PROJECT FOOTSCRAY COMMUNITY ARTS URBAN REALM	PROJECT NUMBER 23022	CLIENT FCA	DRAWING TITLE ELEVATIONS	DRAWN BY MR	CHECKED BY JW	DATE MAR 04 2024	SCALE 1:200 @ A3	DRAWING NUMBER TP 413	REVISION --
--	-------------------------	---------------	-----------------------------	----------------	------------------	---------------------	---------------------	--------------------------	----------------

TOWN PLANNING ISSUE

REPRODUCTION OF THE WHOLE OR PART OF THIS DOCUMENT CONSTITUTES AN INFRINGEMENT OF COPYRIGHT. THE INFORMATION, IDEAS AND CONCEPTS CONTAINED IN THIS DOCUMENT ARE CONFIDENTIAL. THE RECIPIENT(S) OF THIS DOCUMENT IS PROHIBITED FROM DISCLOSING SUCH INFORMATION, IDEAS AND CONCEPTS TO ANY PERSON WITHOUT THE PRIOR WRITTEN CONSENT OF MGS ARCHITECTS PTY L

MGS ARCHITECTS PTY LTD ABN 13 006 488 302 | MGSARCHITECTS.COM.AU
10-22 MANTON LANE MELBOURNE 3000 AUSTRALIA | T +61 3 9670 1800

