

MOUNT MACEDON MEMORIAL CROSS
URGENT WORKS
DRAWING REGISTER

DRAWING	TITLE
22060.00	COVER SHEET, NOTES, AERIAL IMAGE AND SITE PLAN
22060.01	DEMOLITION SITE PLAN
22060.02	DEMOLITION WORKS MEMORIAL CROSS, PLAN AND SECTIONS
22060.03	PROPOSED SITE PLAN
22060.04	PROPOSED PATHWAY DETAILS
22060.05	PROPOSED PATHWAY TERMINATION DETAILS AND MAJOR MITCHELL'S LOOKOUT DETAILS
22060.06	PROPOSED MEMORIAL CROSS BALUSTRADE PLAN AND SECTIONS
22060.07	PROPOSED WORKS TYPICAL BALUSTRADE DETAILS 1 OF 2 - PANEL TYPE A, B & C
22060.08	PROPOSED WORKS TYPICAL BALUSTRADE DETAILS 2 OF 2 - PANEL TYPE D

GENERAL NOTES:

1. THIS DRAWING PACKAGE HAS BEEN PREPARED BY CONSERVATION STUDIO FOR TENDER ONLY, NOT FOR CONSTRUCTION
2. ALL DRAWING SCALES, DIMENSIONS, INVERT AND RELATIVE LEVELS OR HEIGHTS, AND OTHER QUANTIFIED CHARACTERISTICS ARE INDICATIVE ONLY
3. SITE ESTABLISHMENT TO BE COORDINATED BETWEEN CONTRACTOR AND PROPRIETOR
4. CONTRACTOR IS TO CONFIRM ALL DIMENSIONS AND QUANTIFIED CHARACTERISTICS ON SITE PRIOR TO COMMENCEMENT OF WORKS
5. ALL SERVICES LOCATIONS ARE INDICATIVE ONLY AND LOCATIONS SHOULD BE CONFIRMED ON SITE PRIOR TO THE COMMENCEMENT OF WORKS
6. CONTRACTOR IS TO PROVIDE PROTECTION TO ALL EXISTING ADJACENT SURFACES FOR THE DURATION OF WORKS. INCLUDING BUT NOT LIMITED TO: EXISTING FIXTURES, FITTINGS, EXISTING SERVICES SUCH AS FIRE SERVICES AND MURALS, PLAQUES AND MONUMENTS.
7. CONTRACTOR IS TO REMOVE ALL RUBBLE, DUST AND DEBRIS FROM THE SITE AND DISPOSE OF IN ACCORDANCE WITH RELEVANT AUTHORITIES REGULATIONS AND GUIDELINES

WORK NOTES:

FOOTPATHS

1. REMOVE AND RETAIN EXISTING BENCHES FOR REINSTALLATION AT COMPLETION OF WORKS.
2. DEMOLISH EXISTING ASPHALT PATH.
3. DEMOLISH EXISTING LIGHTING IN AREAS OF NEW ASPHALT PATH. REFER TO ELECTRICAL ENGINEER'S DOCUMENTATION.
4. TO PREPARE NEW TRENCHES FOR NEW FOOTPATH, SERVICES AND DRAINAGE, HYDRO EXCAVATE WITHIN THE FOOTPRINT OF THE EXISTING ASPHALT PATH TAKING CARE OF EXISTING TREE ROOTS.
8. EXISTING STRIP DRAINS ARE TO BE REPLACED WITH ACO POWER SK100 STRIP DRAIN UNLESS OTHERWISE NOTED.
9. NEW PIT DRAIN TO BE ACO POLYCRETE TYPE 45 PIT WITH HOT DIP GALVANISED, HEEL SAFE, GRATED, CLASS C COVER, AND ALL INSTALLED TO MANUFACTURERS RECOMMENDATIONS.
10. LAY NEW ASPHALT PATH IN ACCORDANCE WITH CIVIL ENGINEER'S DETAILS AT 1:200 FALLS DRAINING TO PERIMETER SPOON DRAIN. FFL OF NEW PATH TO SIT MINIMUM 50MM HIGHER THAN EXISTING LEVEL OF PATH TO MINIMISE DAMAGE TO TREE ROOTS.
11. ASPHALT PATH BUILD UP: SUBGRADE COMPACTED TO 100% STANDARD DENSITY TO A.S 1289; 70MM THICK CLASS 2A CRUSHED ROCK COMPACTED TO 100% STANDARD DENSITY TO A.S 1289; 100MM THICK CLASS 2A CRUSHED ROCK COMPACTED TO 100% STANDARD DENSITY TO A.S 1289; PRIME AND TACK COAT SURFACE; 30MM THICK ASPHALT WITH 10MM AGGREGATE SIZE.
12. PRECAST CONCRETE SPOON DRAINS INSTALLED TO EITHER SIDE OF PATH TO DISCHARGE EVERY 5 METERS TO ROCK FILLED SUMP AT LOWER POINT IN PATHS GRADIENT. REFER TO CIVIL ENGINEER'S DETAILS.
13. REINSTATE RETAINED BENCHES AT COMPLETION OF FOOTPATH WORKS.

BALUSTRADES

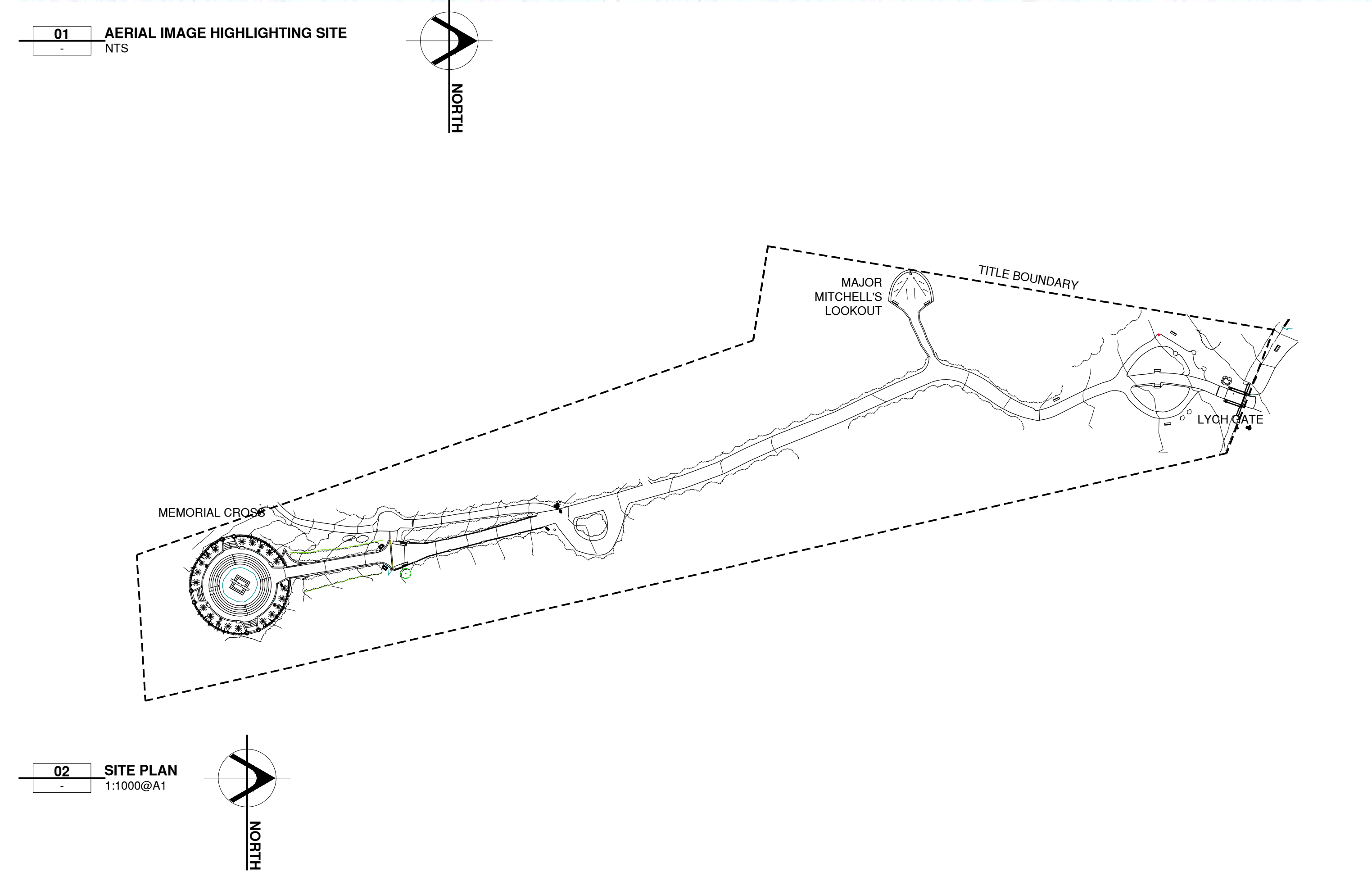
15. CHECK MEASURE SITE CONDITIONS TO CONFIRM REQUIRED PANEL SIZING AND PROVIDE BALUSTRADE SHOP DRAWINGS FOR REVIEW AND APPROVAL.
16. FABRICATE, HOT DIP GALVANISE AND PAINT FINISH NEW BALUSTRADE PANELS OFF SITE. REFER TO PAINT SPECIFICATION.
17. DEMOLISH EXISTING BALUSTRADES AROUND THE MEMORIAL CROSS.
18. EXCAVATE TOP SOIL 200MM FROM PERIMETER WALL APPROXIMATELY 200MM DEEP TO EXPOSE CONCRETE SUBSTRATE, AND LOCALLY CUT OUT CONCRETE PAVING AND ASSOCIATED SUBSTRATE ON LOWER LANDINGS TO EXPOSE CONCRETE SUBSTRATE FOR FIXING NEW BALUSTRADES INTO.
19. ASSESS INTEGRITY OF CONCRETE SUBSTRATE WHERE NEW BALUSTRADES ARE TO BE INSTALLED AND REPAIR AS REQUIRED.
20. INSTALL NEW BALUSTRADE PANELS. LOCALLY WELD AND PAINT WHERE REQUIRED.
21. REINSTATE PAVING WHERE REMOVED FOR INSTALLATION OF BALUSTRADES.
21. REFILL AND GRADE TOP SOIL FOLLOWING COMPLETION OF WORKS.
21. TOUCH UP BALUSTRADE PAINT FINISH WHERE REQUIRED.

KEY:

- DEMOLITION
- REMOVE, RETAIN AND REINSTATE
- NEW ASPHALT
- EXB EXISTING BENCH
- EXL EXISTING LIGHT
- EXC EXISTING CAMERA
- EXMP EXISTING MEMORIAL PLAQUE
- NLP NEW LIGHT POLE
- SIGN NEW SIGN

MATERIAL TAGS:

- ASPH ASPHALT
- CONP CONCRETE PAVING
- CONS CONCRETE STAIR
- CMC CONCRETE MEMORIAL CROSS
- CSG CEMENT STABILISED GRAVEL
- MPLQ MEMORIAL PLAQUE
- PLA PLANTER
- GRA GRASS



REVISION	DATE	DESCRIPTION
00	13.02.2025	ISSUE TO HERITAGE VICTORIA
-	-	-
-	-	-
-	-	-
-	-	-
-	-	-

FOR INFORMATION ONLY

CLIENT: Mount Macedon Memorial Cross Committee of Management

ARCHITECT: conservation studio

PROJECT: MMMC UR URGENT WORKS

ADDRESS: MOUNT MACEDON VIC 3441

PROJECT NO.: 22060

DRAWN: JR, LG

checked: DB

The Block Arcade - Level 4 - Suite 421  
282-284 Collins Street Melbourne VIC 3000  
contact@conservationstudio.com.au

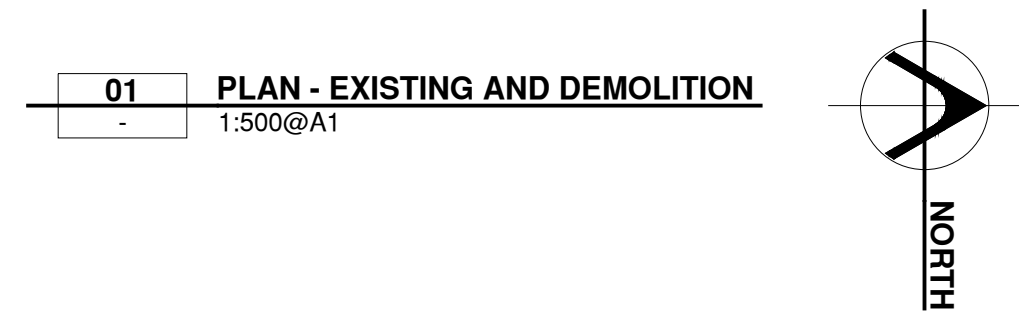
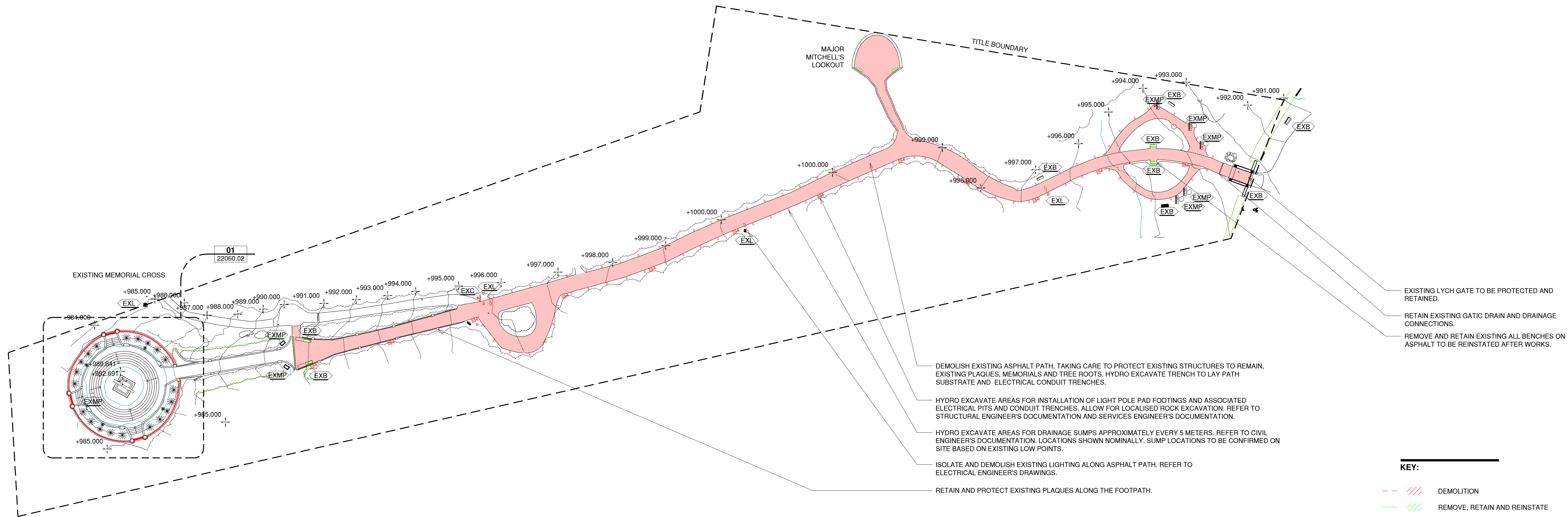
REVISION: 00

SCALE: 1:1000 @ A1

DRAWING NO.: 22060.00

DRAWING TITLE: COVER PAGE, NOTES AND AERIAL IMAGE





DISCLAIMER:	REVISION	DATE	DESCRIPTION
Check and verify all dimensions prior to commencement of work. Seek clarification of inconsistencies / conflicts. Do not scale from the drawing. Any form of reproduction of this drawing in full or in part, without written permission of Conservation Studio Australia Pty Ltd constitutes an infringement of copyright. © This drawing is copyright and shall remain the property of Conservation Studio Australia Pty Ltd.	00	13.02.2025	ISSUE TO HERITAGE VICTORIA
	-		
	-		
	-		
	-		
	-		
	-		

FOR INFORMATION ONLY

CLIENT: Mount Macedon Memorial Cross Committee of Management

ARCHITECT: conservation studio

PROJECT: MMMCR URGENT WORKS  
ADDRESS: MOUNT MACEDON VIC 3441

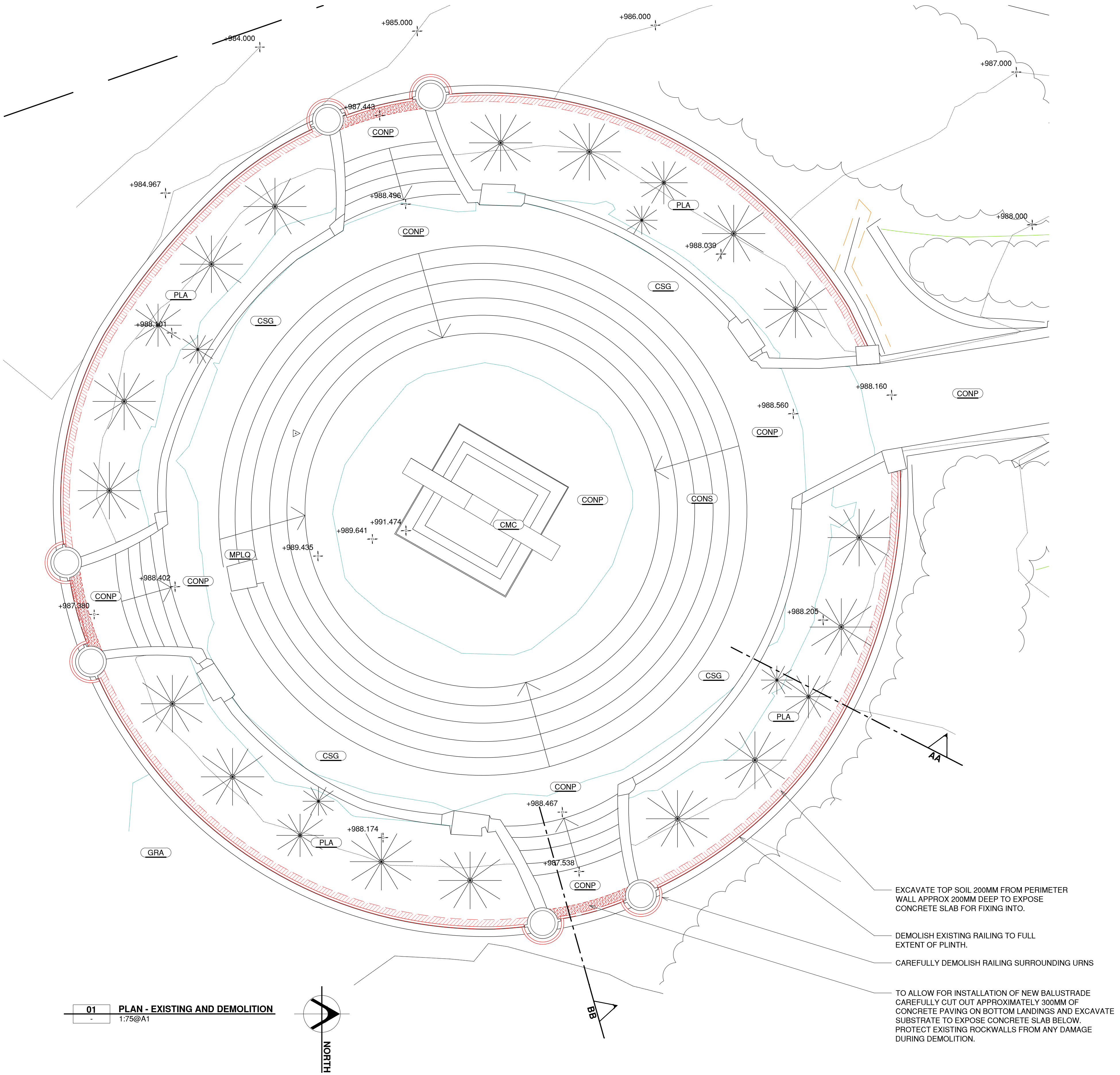
PROJECT NO.: 22060  
DRAWN: JR, LG  
CHECKED: DB

REVISION: 00  
SCALE: 1:500 @ A1

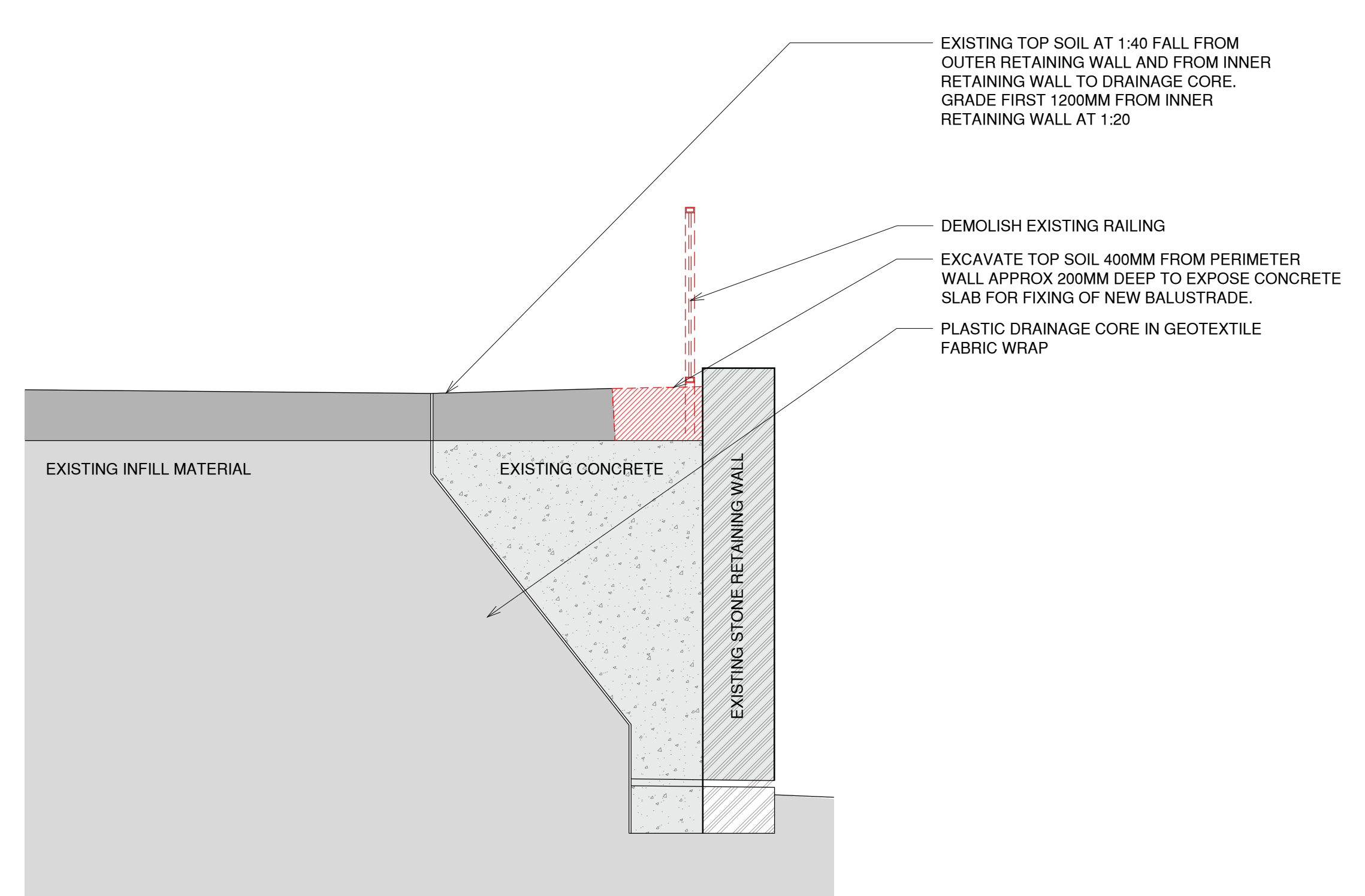
DRAWING TITLE: DEMOLITION SITE PLAN ASPHALT PATH

DRAWING NO.: 22060.01

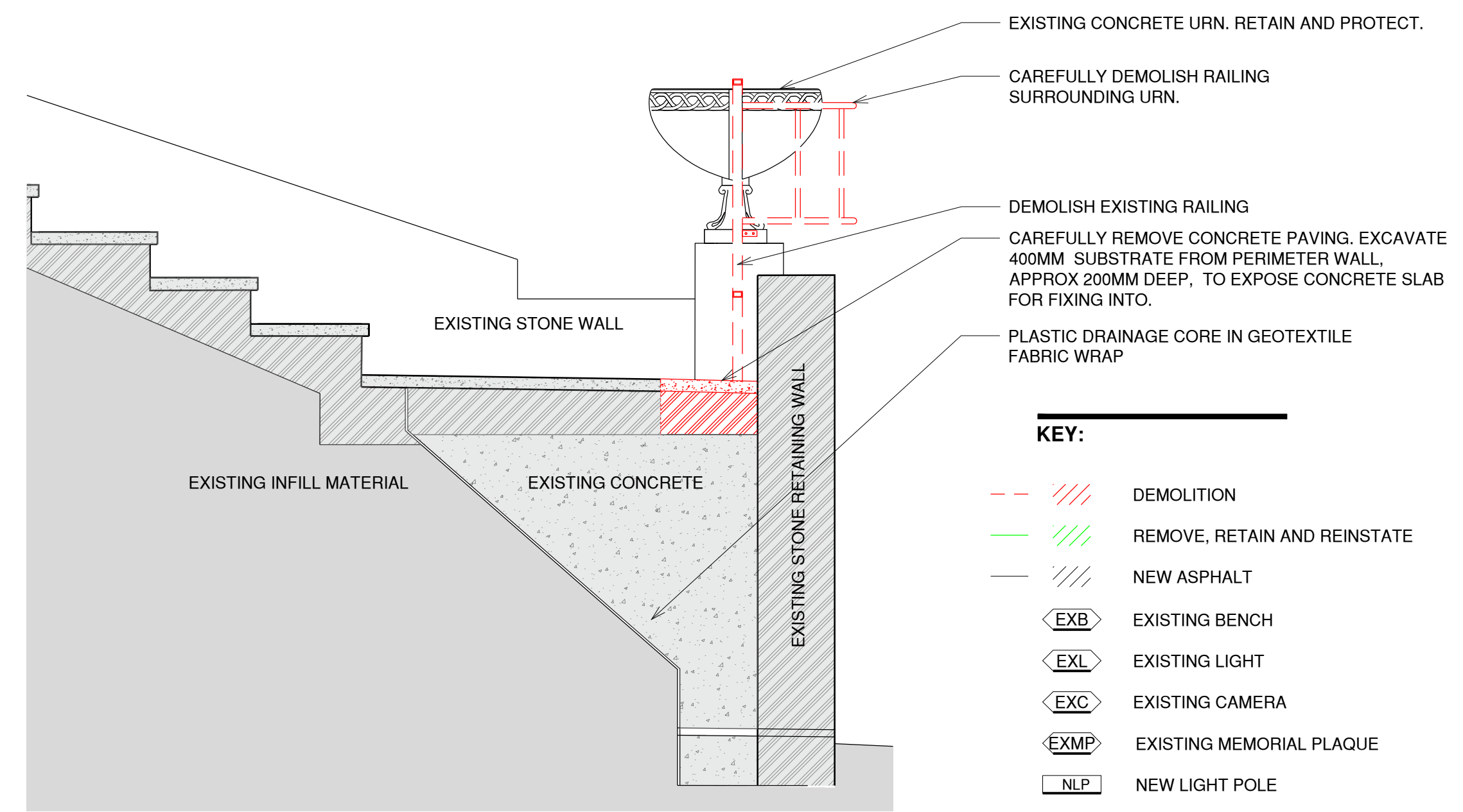




**01 PLAN - EXISTING AND DEMOLITION**  
1:75@A1



**02 SECTION AA EXISTING AND DEMOLITION**  
1:20@A1



**03 SECTION BB EXISTING AND DEMOLITION**  
1:20@A1

- KEY:**
- DEMOLITION
  - REMOVE, RETAIN AND REINSTATE
  - NEW ASPHALT
  - EXISTING BENCH
  - EXISTING LIGHT
  - EXISTING CAMERA
  - EXISTING MEMORIAL PLAQUE
  - NEW LIGHT POLE
  - NEW SIGN

- MATERIAL TAGS:**
- ASPH ASPHALT
  - CONP CONCRETE PAVING
  - CONS CONCRETE STAIR
  - CMC CONCRETE MEMORIAL CROSS
  - CSG CEMENT STABILISED GRAVEL
  - MPLQ MEMORIAL PLAQUE
  - PLA PLANTER
  - GRA GRASS

**DISCLAIMER:** Check and verify all dimensions prior to commencement of work. Seek clarification of inconsistencies / conflicts. Do not scale from the drawing. Any form of reproduction of this drawing in full or in part, without written permission of Conservation Studio Australia Pty Ltd constitutes an infringement of copyright. © This drawing is copyright and shall remain the property of Conservation Studio Australia Pty Ltd.

REVISION	DATE	DESCRIPTION
00	13.02.2025	ISSUE TO HERITAGE VICTORIA
-	-	-
-	-	-
-	-	-
-	-	-
-	-	-

FOR INFORMATION ONLY

**CLIENT:** Mount Macedon Memorial Cross Committee of Management

**ARCHITECT:**

**conservation studio**

The Block Arcade - Level 4 - Suite 421  
282-284 Collins Street Melbourne VIC 3000  
contact@conservationstudio.com.au

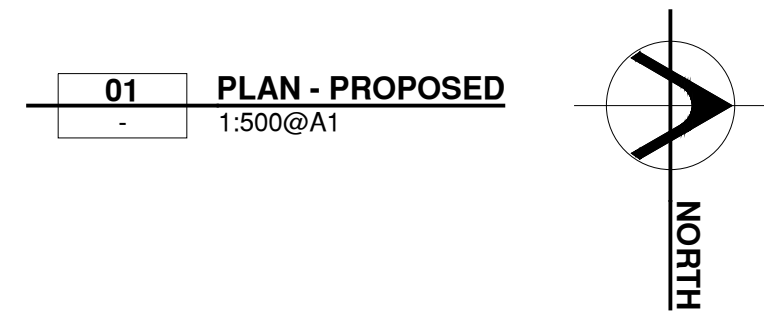
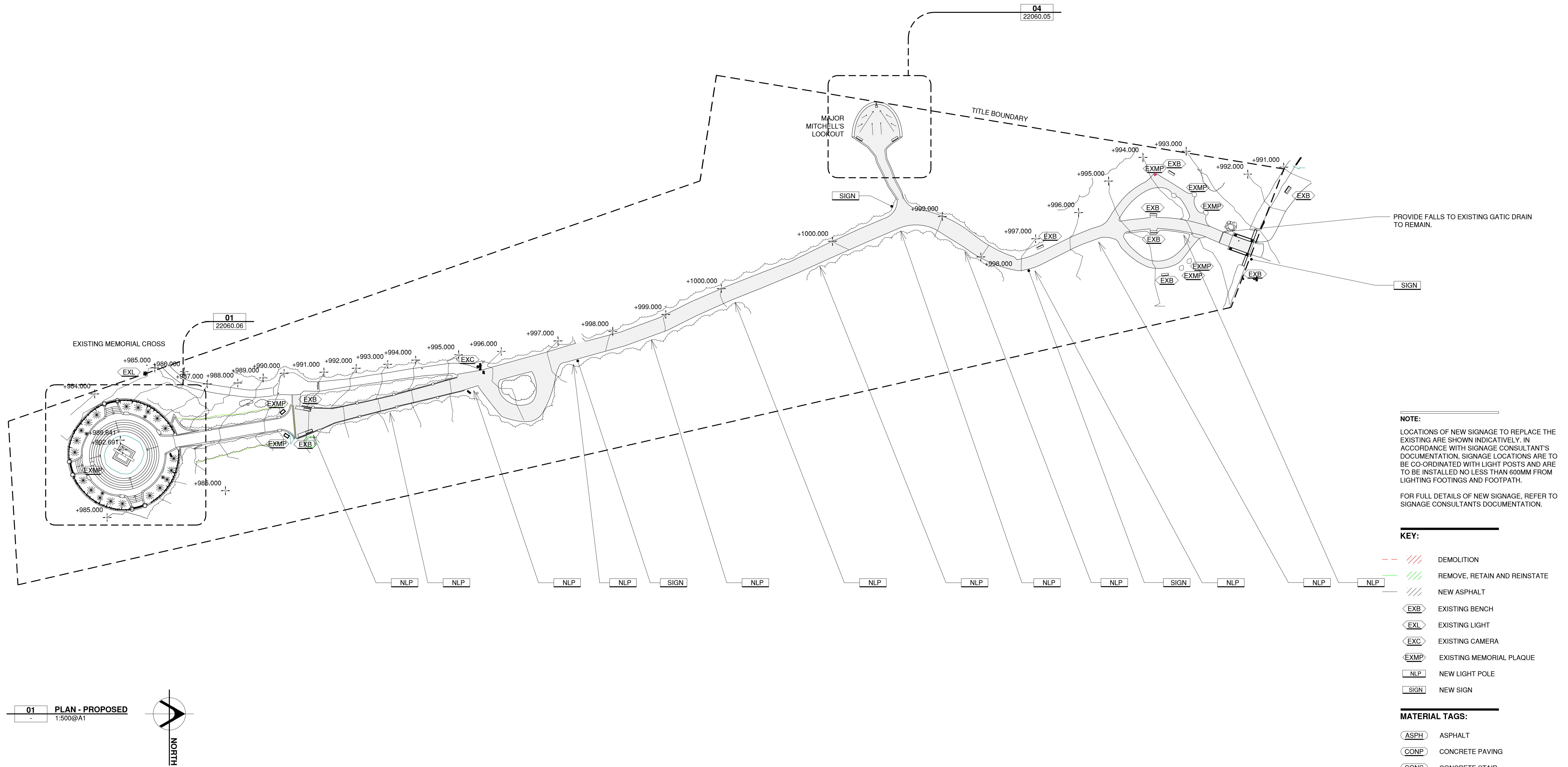
**PROJECT:** MMMCR URGENT WORKS  
**ADDRESS:** MOUNT MACEDON VIC 3441

**PROJECT NO.:** 22060  
**DRAWN:** JR, LG **CHECKED:** DB

**DRAWING TITLE:** DEMOLITION WORKS MEMORIAL CROSS PLAN AND SECTIONS

**REVISION:** 00 **DRAWING NO.:** 22060.02  
**SCALE:** 1:20/1:75 @ A1





DISCLAIMER:	REVISION	DATE	DESCRIPTION
Check and verify all dimensions prior to commencement of work. Seek clarification of inconsistencies / conflicts. Do not scale from the drawing. Any form of reproduction of this drawing in full or in part, without written permission of Conservation Studio Australia Pty Ltd constitutes an infringement of copyright. © This drawing is copyright and shall remain the property of Conservation Studio Australia Pty Ltd.	00	13.02.2025	ISSUE TO HERITAGE VICTORIA
	-	-	-
	-	-	-
	-	-	-
	-	-	-
	-	-	-

FOR INFORMATION ONLY

CLIENT: Mount Macedon Memorial Cross Committee of Management

ARCHITECT:

conservation  
studio

The Block Arcade - Level 4 - Suite 421  
282-284 Collins Street Melbourne VIC 3000  
contact@conservationstudio.com.au

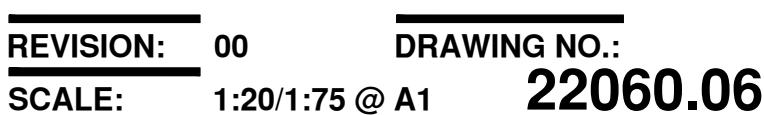
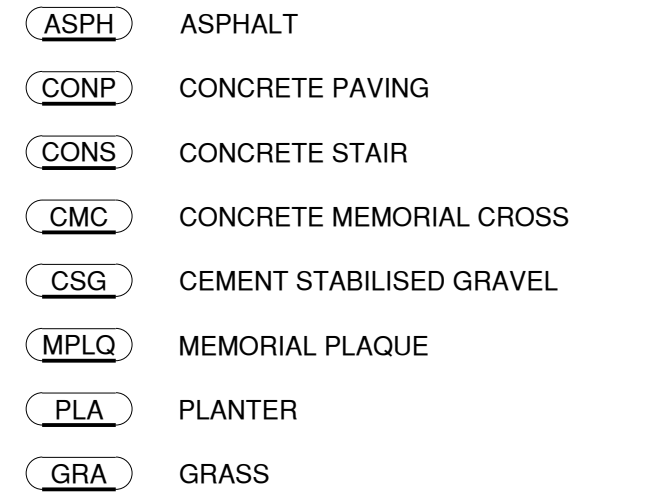
PROJECT: MMMC URGENT WORKS  
ADDRESS: MOUNT MACEDON VIC 3441

PROJECT NO.: 22060  
DRAWN: JR, LG  
CHECKED: DB

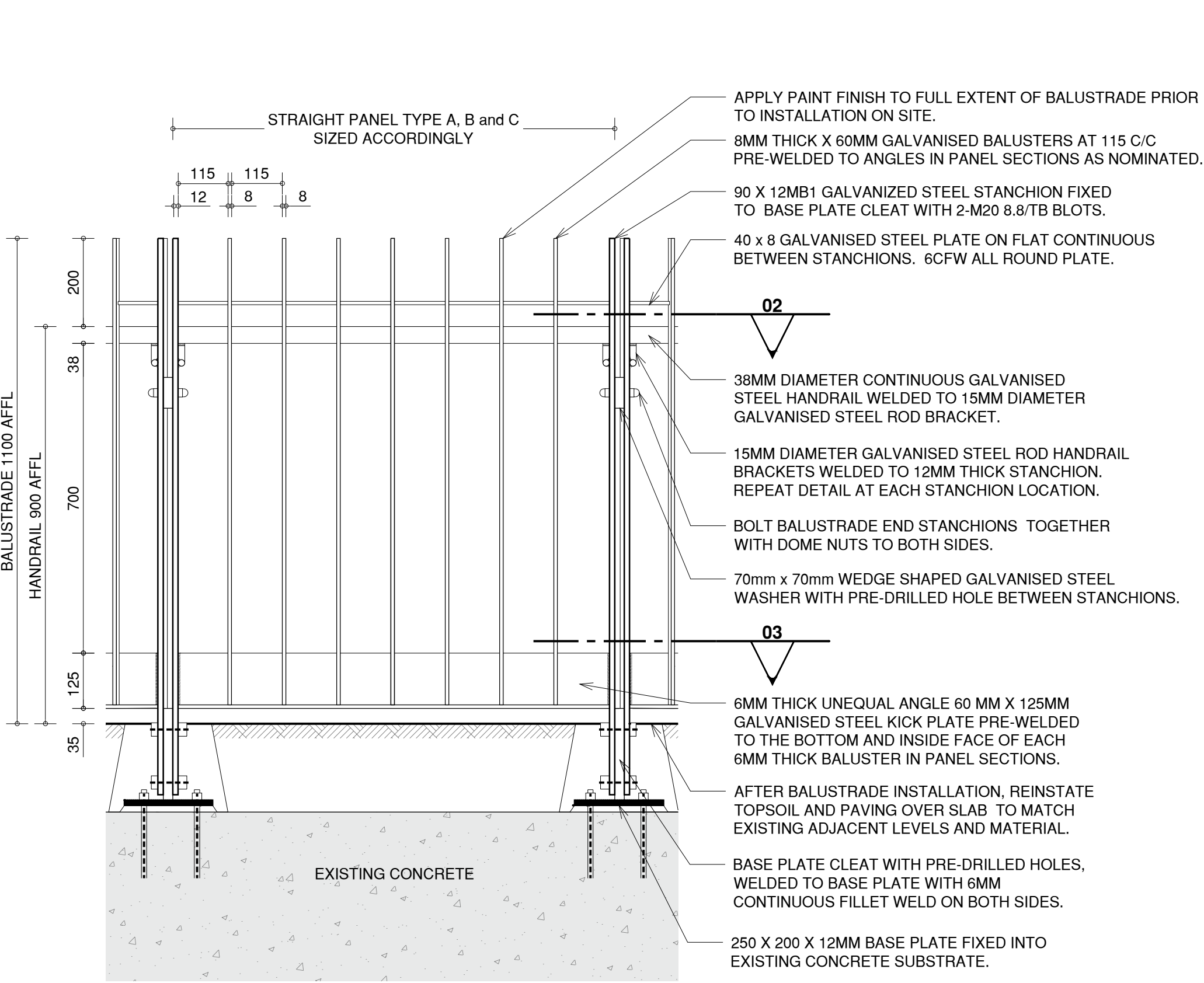
DRAWING TITLE: PROPOSED SITE PLAN

REVISION: 00  
SCALE: 1:500 @ A1  
DRAWING NO.: 22060.03

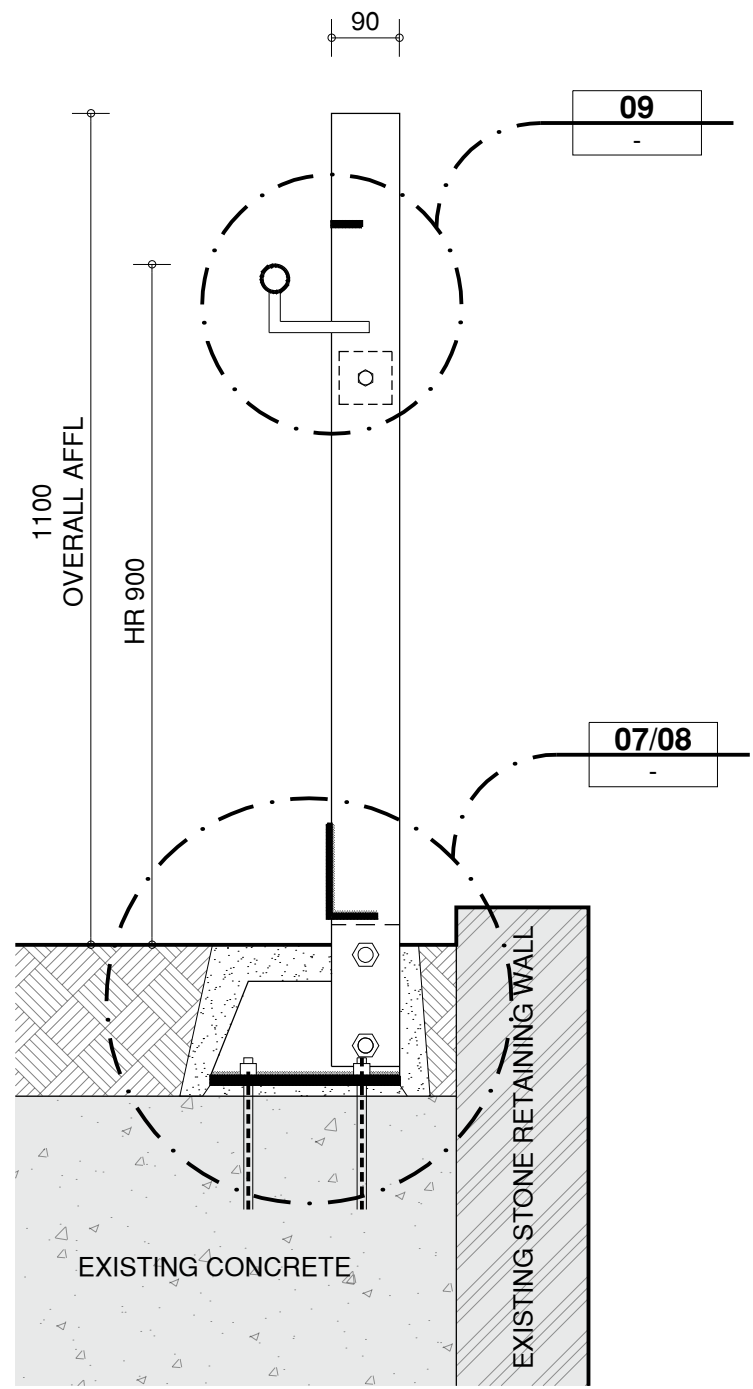




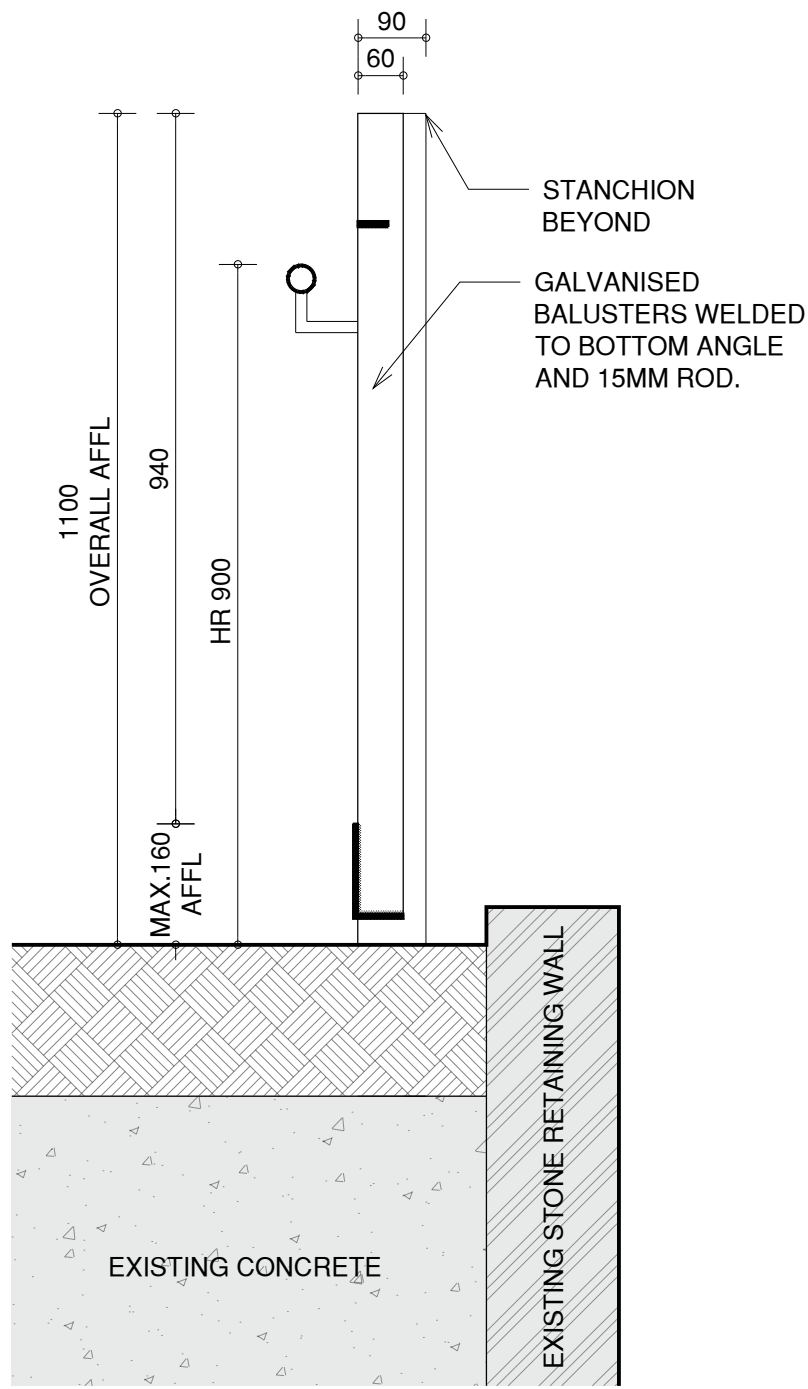




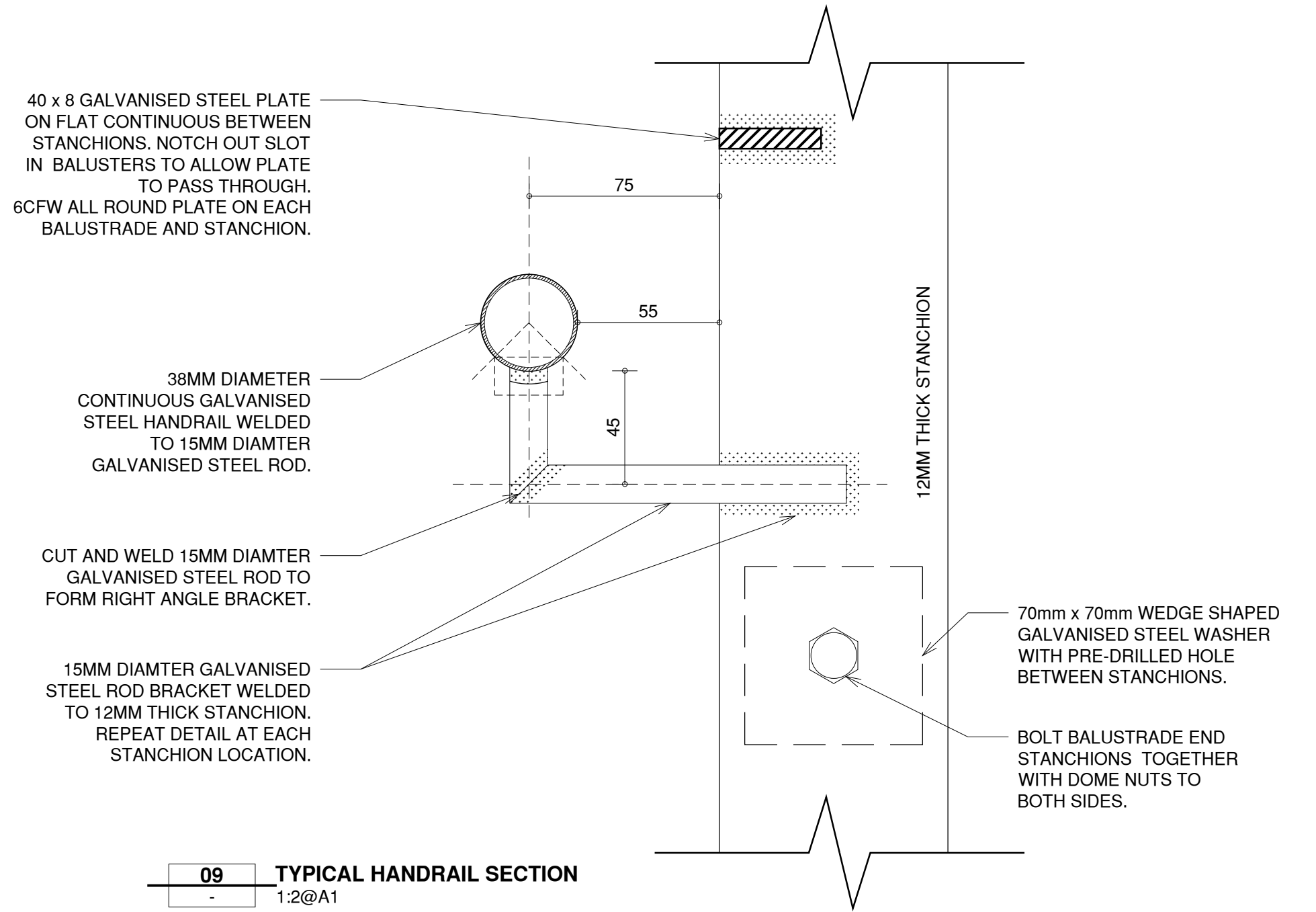
01 TYPICAL BALUSTRADE ELEVATION  
1:10@A1



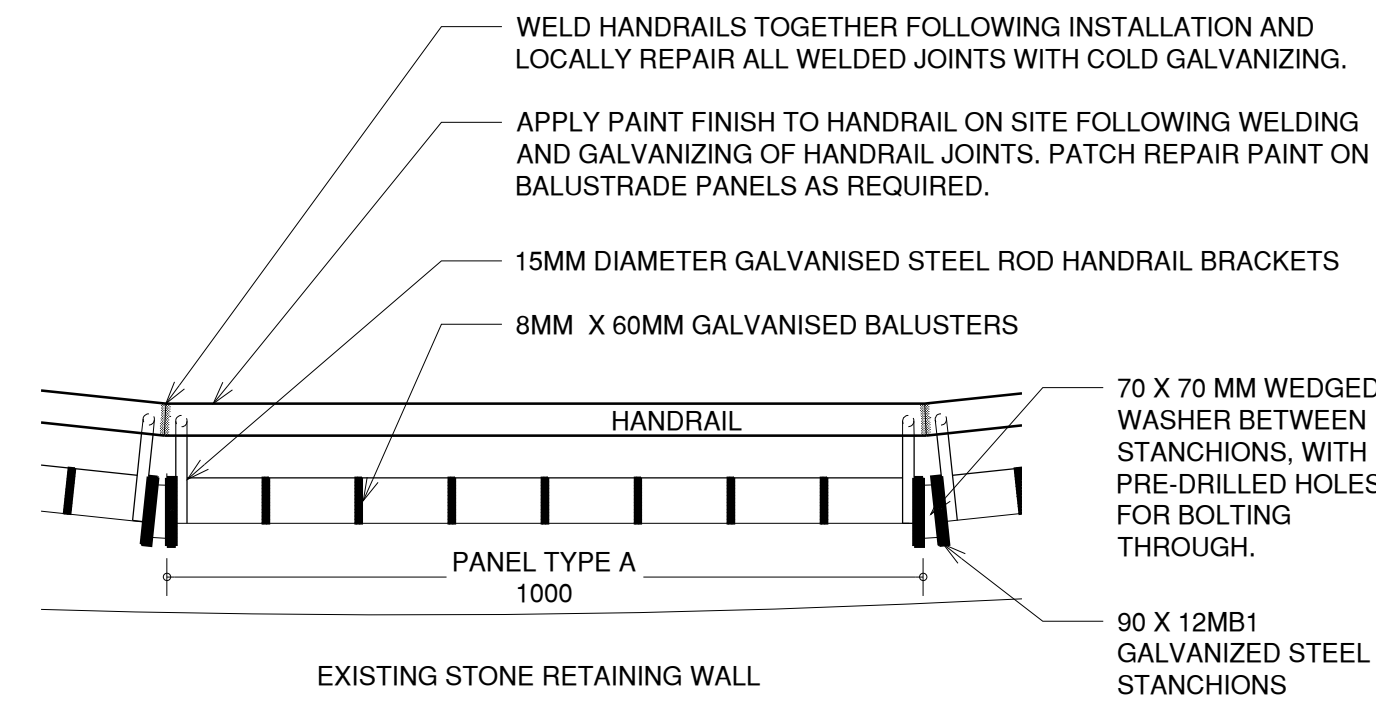
04 TYPICAL STANCHION ELEVATION  
1:10@A1



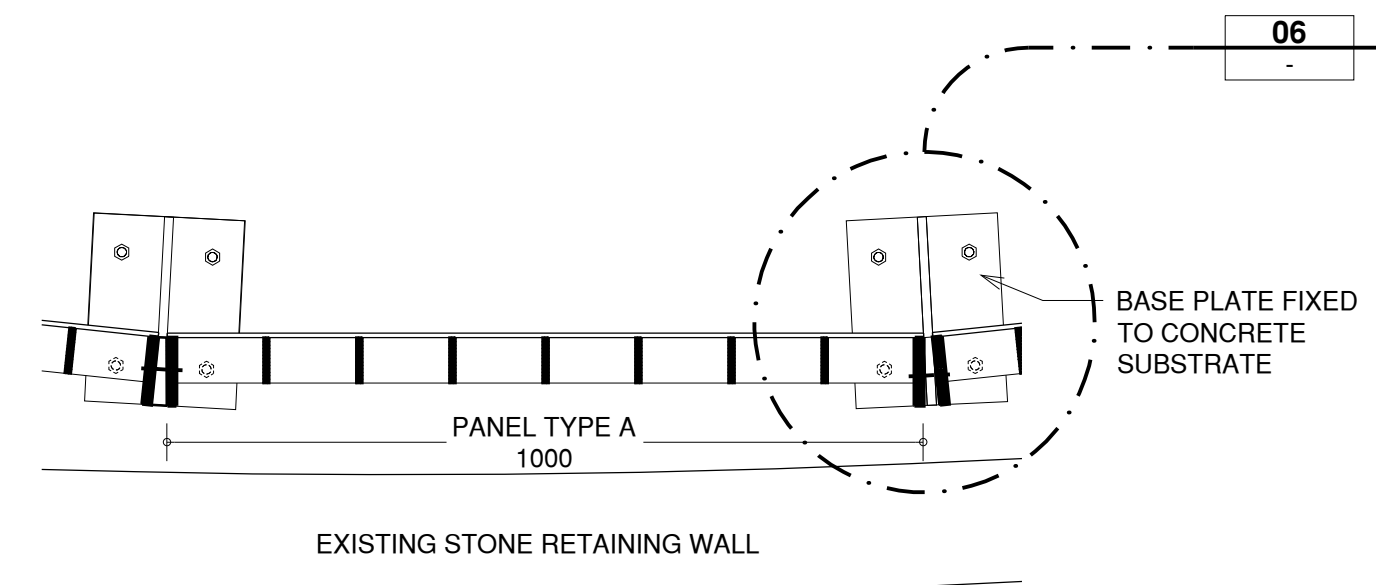
05 TYPICAL BALUSTRADE SECTION  
1:10@A1



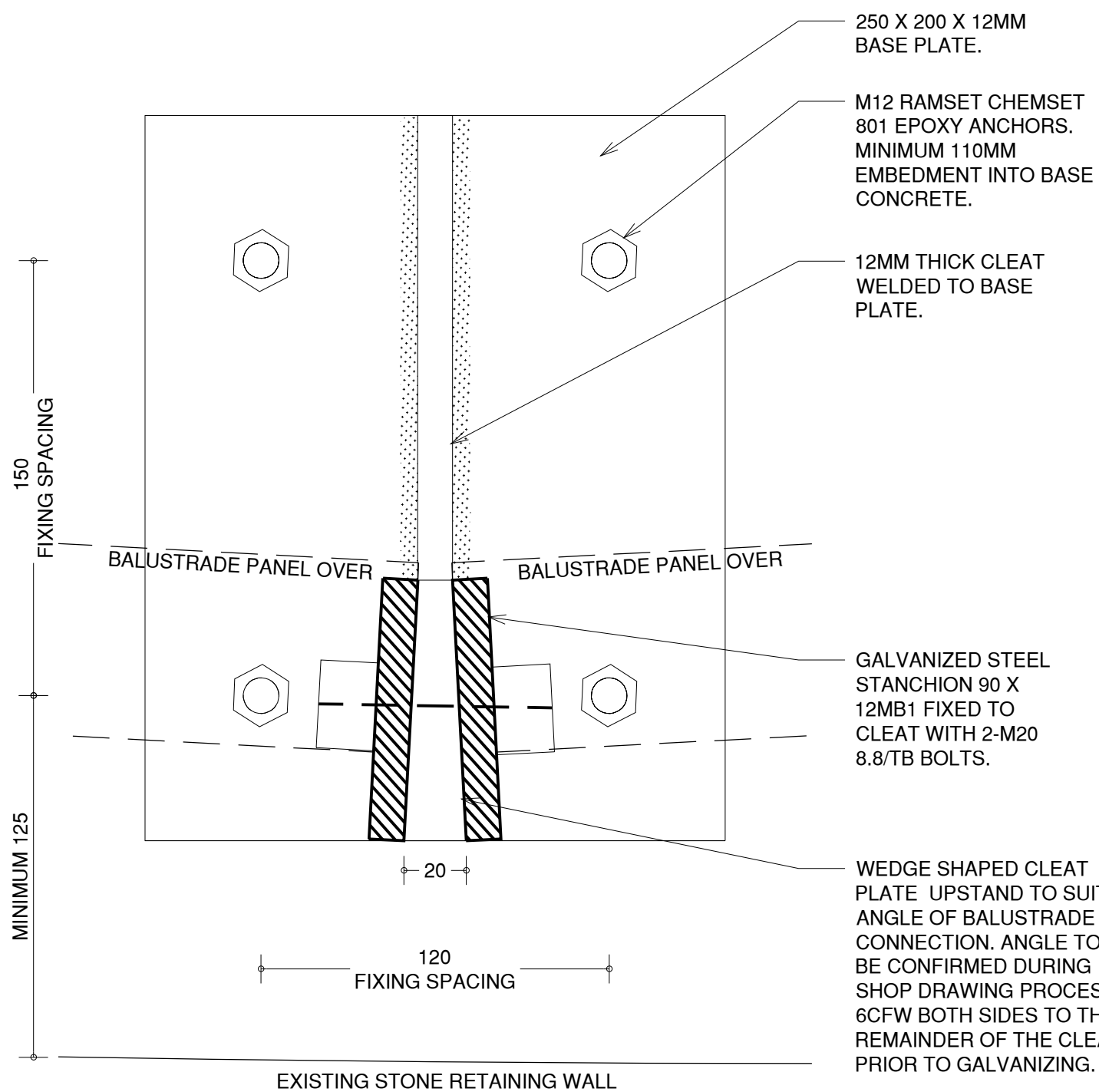
09 TYPICAL HANDRAIL SECTION  
1:2@A1



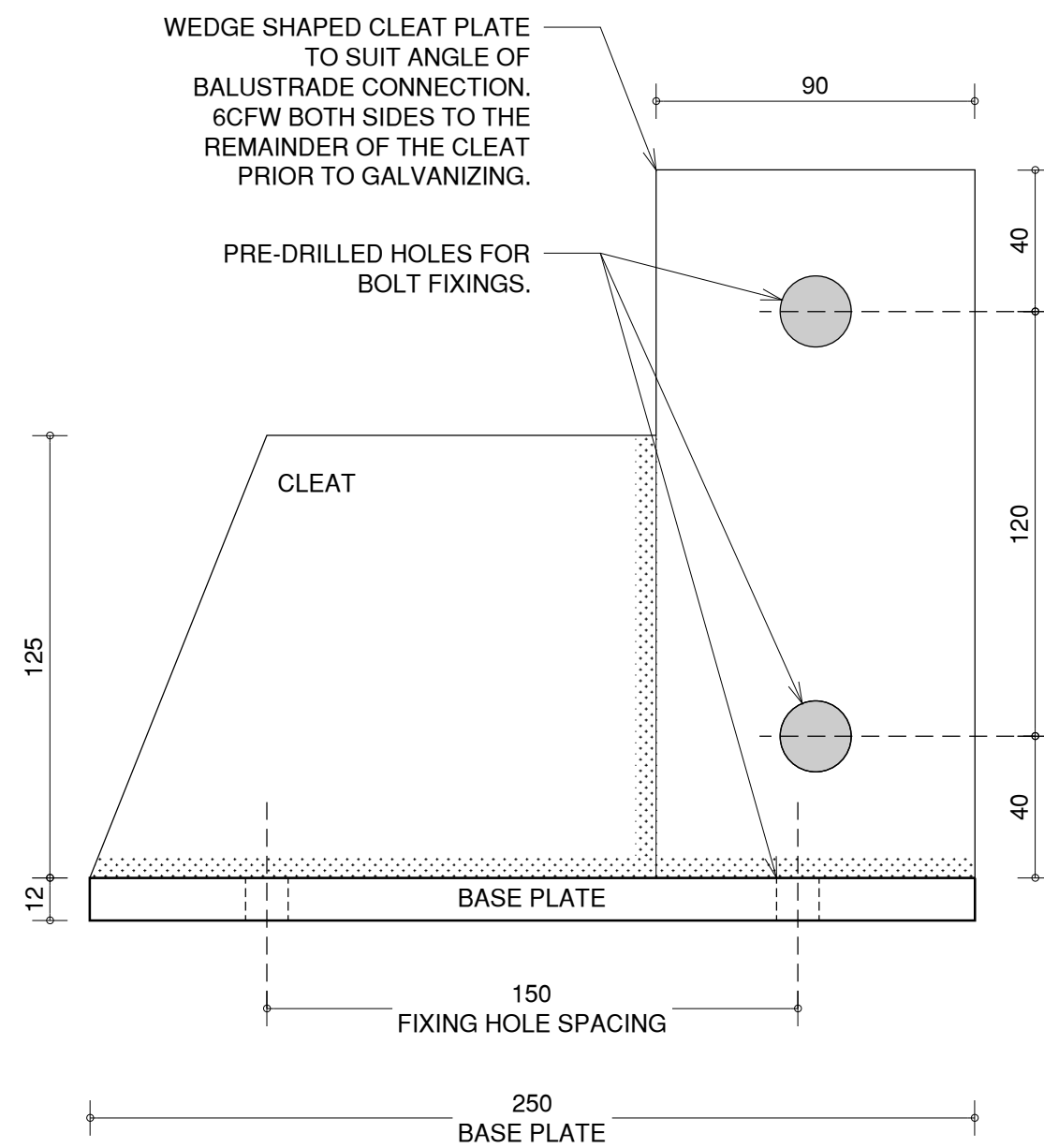
02 HIGH LEVEL BALUSTRADE PLAN  
1:10@A1



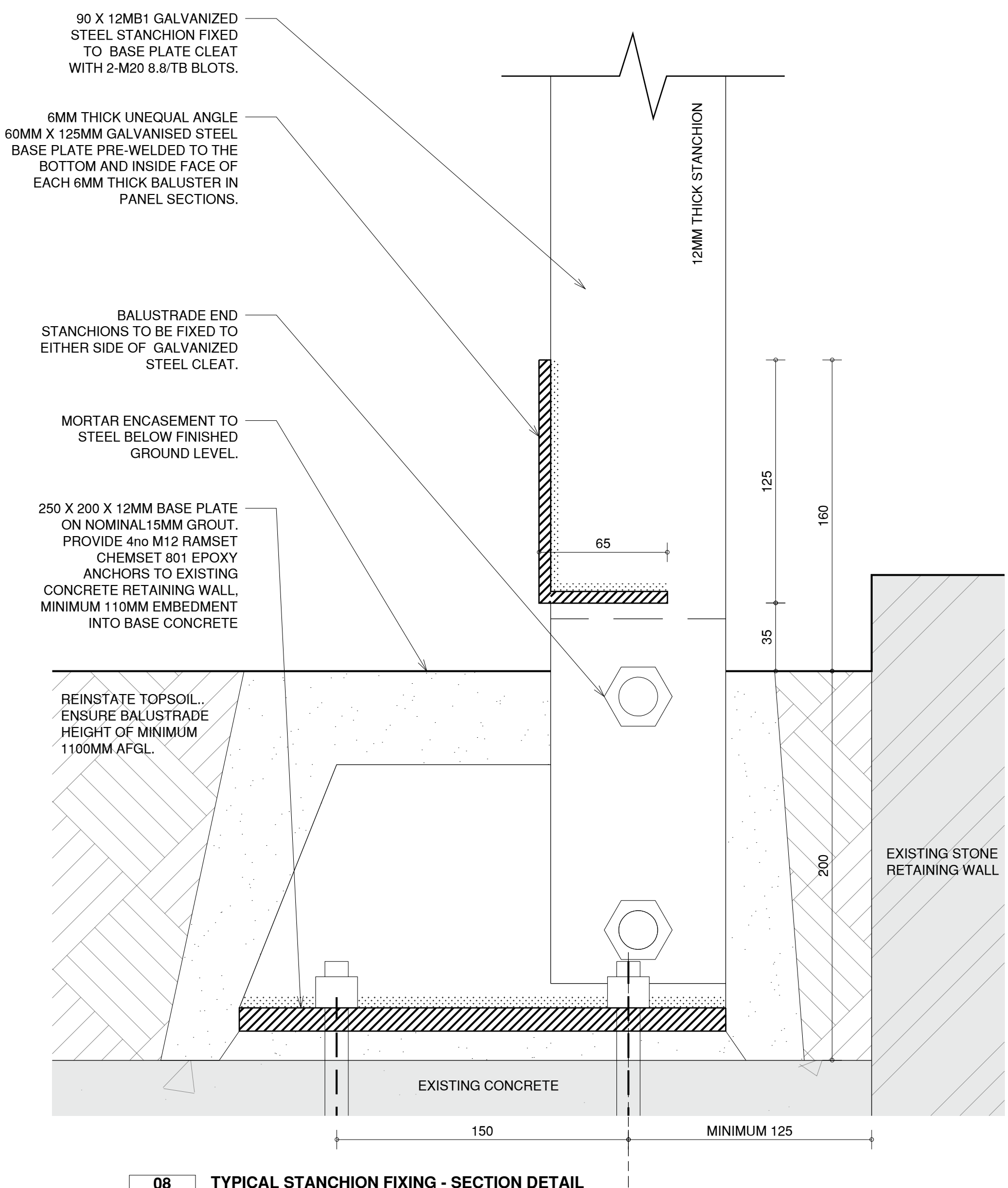
03 LOW LEVEL BALUSTRADE PLAN  
1:10@A1



06 TYPICAL BALUSTRADE FIXING PLAN DETAIL  
1:2@A1



07 TYPICAL BASE PLATE AND CLEAT - ELEVATION DETAIL  
1:2@A1



08 TYPICAL STANCHION FIXING - SECTION DETAIL  
1:2@A1

**DISCLAIMER:** Check and verify all dimensions prior to commencement of work. Seek clarification of inconsistencies / conflicts. Do not scale from the drawing. Any form of reproduction of this drawing in full or in part, without written permission of Conservation Studio Australia Pty Ltd constitutes an infringement of copyright. © This drawing is copyright and shall remain the property of Conservation Studio Australia Pty Ltd.

REVISION	DATE	DESCRIPTION
00	13.02.2025	ISSUE TO HERITAGE VICTORIA
-	-	-
-	-	-
-	-	-
-	-	-
-	-	-

FOR INFORMATION ONLY

**CLIENT:** Mount Macedon Memorial Cross Committee of Management

**ARCHITECT:**

**conservation studio**

The Block Arcade - Level 4 - Suite 421  
282-284 Collins Street Melbourne VIC 3000  
contact@conservationstudio.com.au

**PROJECT:** MMMC URGENT WORKS  
**ADDRESS:** MOUNT MACEDON VIC 3441

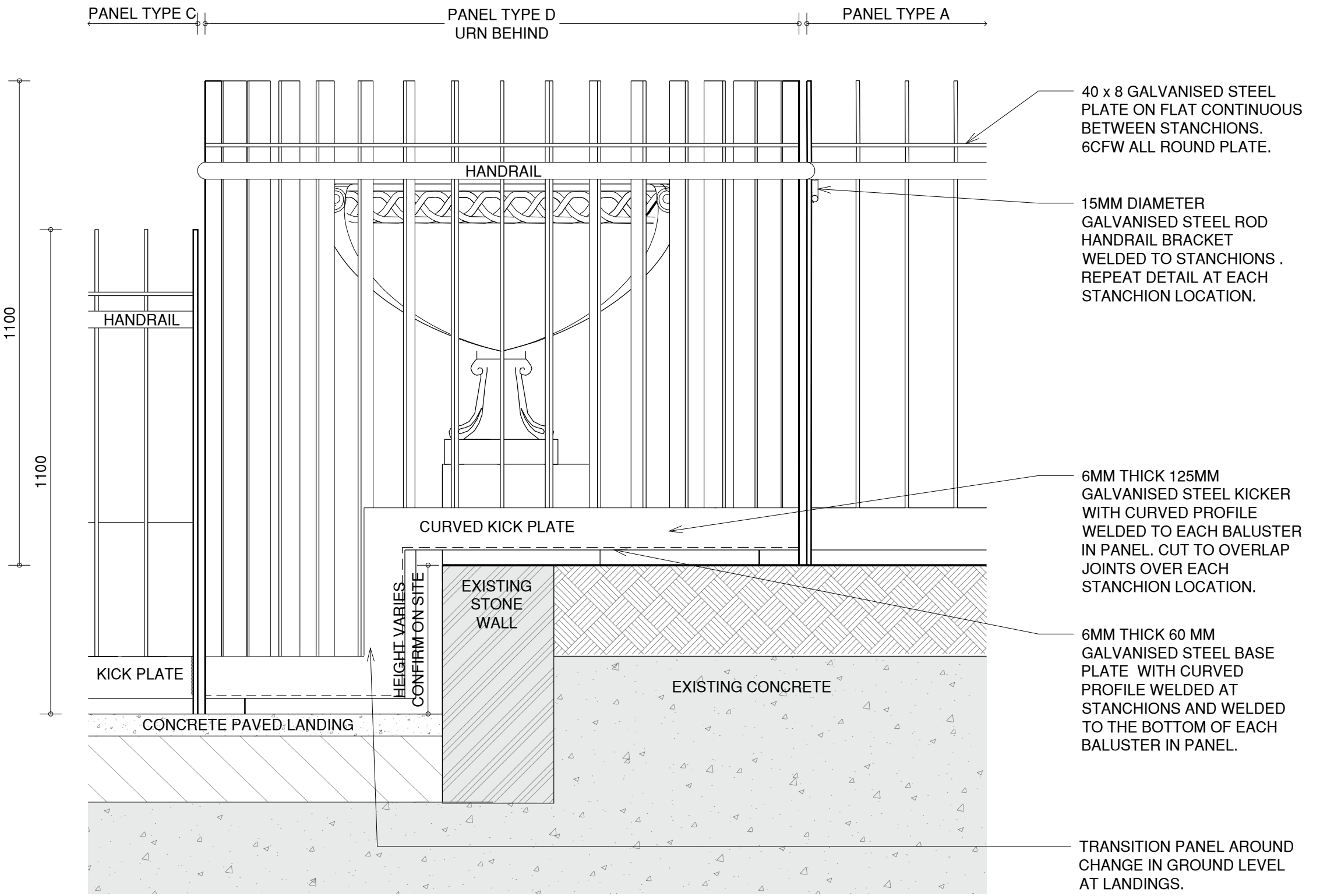
**PROJECT NO.:** 22060  
**DRAWN:** JR, LG  
**CHECKED:** DB

**DRAWING TITLE:** PROPOSED WORKS  
TYPICAL BALUSTRADE DETAILS  
1 OF 2 - PANEL TYPE A, B & C

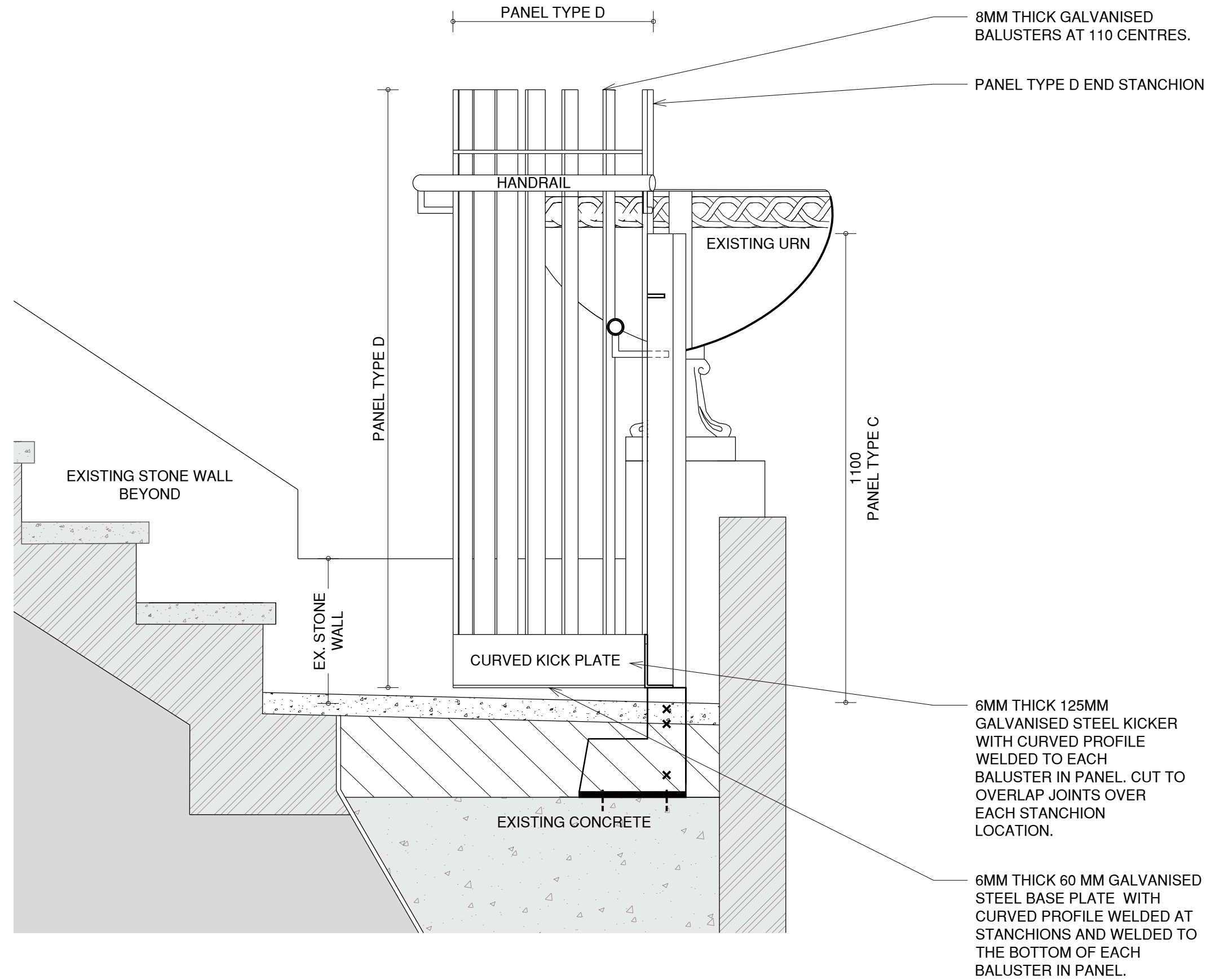
**REVISION:** 00  
**SCALE:** VAR. @ A1

**DRAWING NO.:** 22060.07

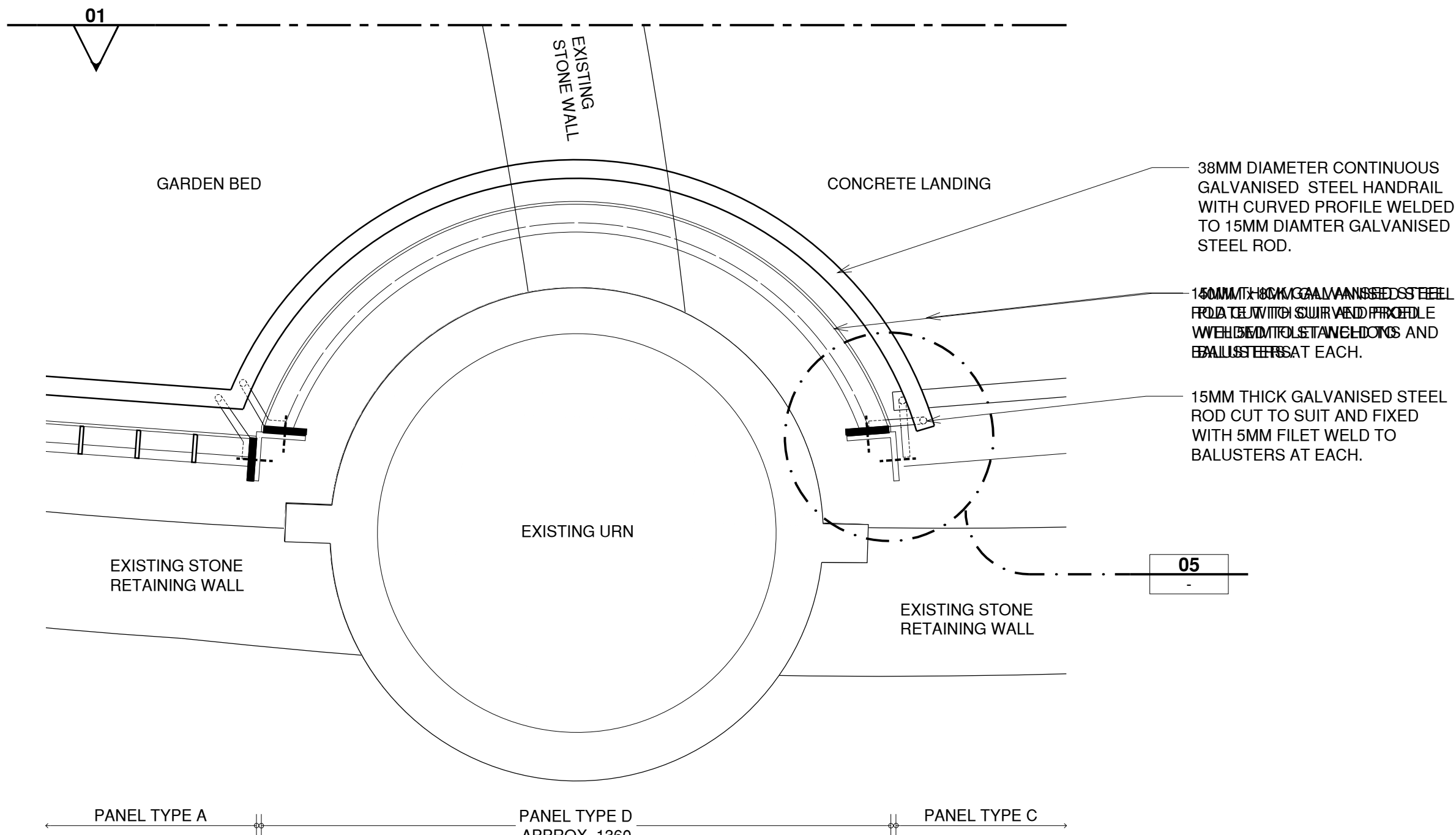




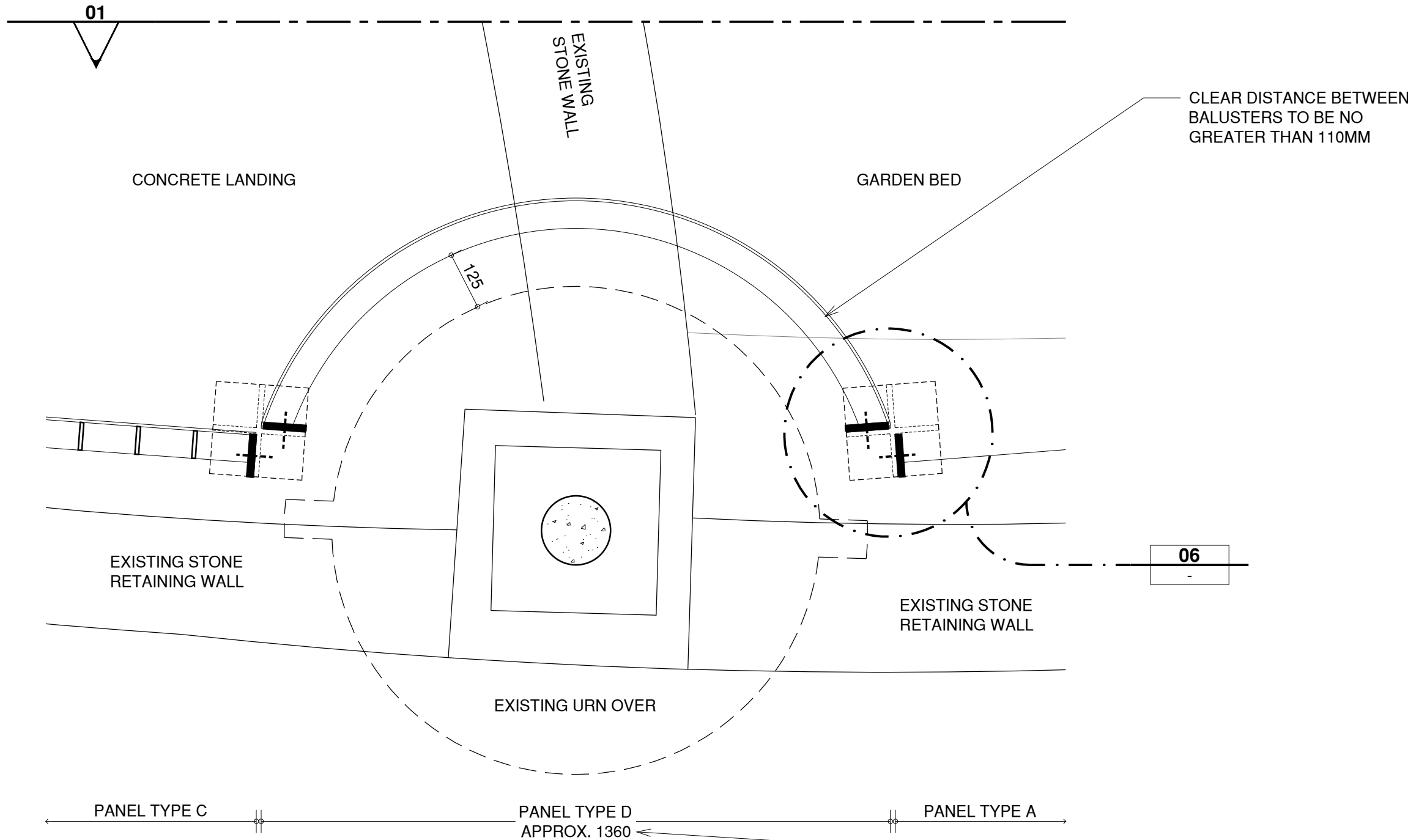
01 PANEL D TYPICAL ELEVATION  
1:10@A1



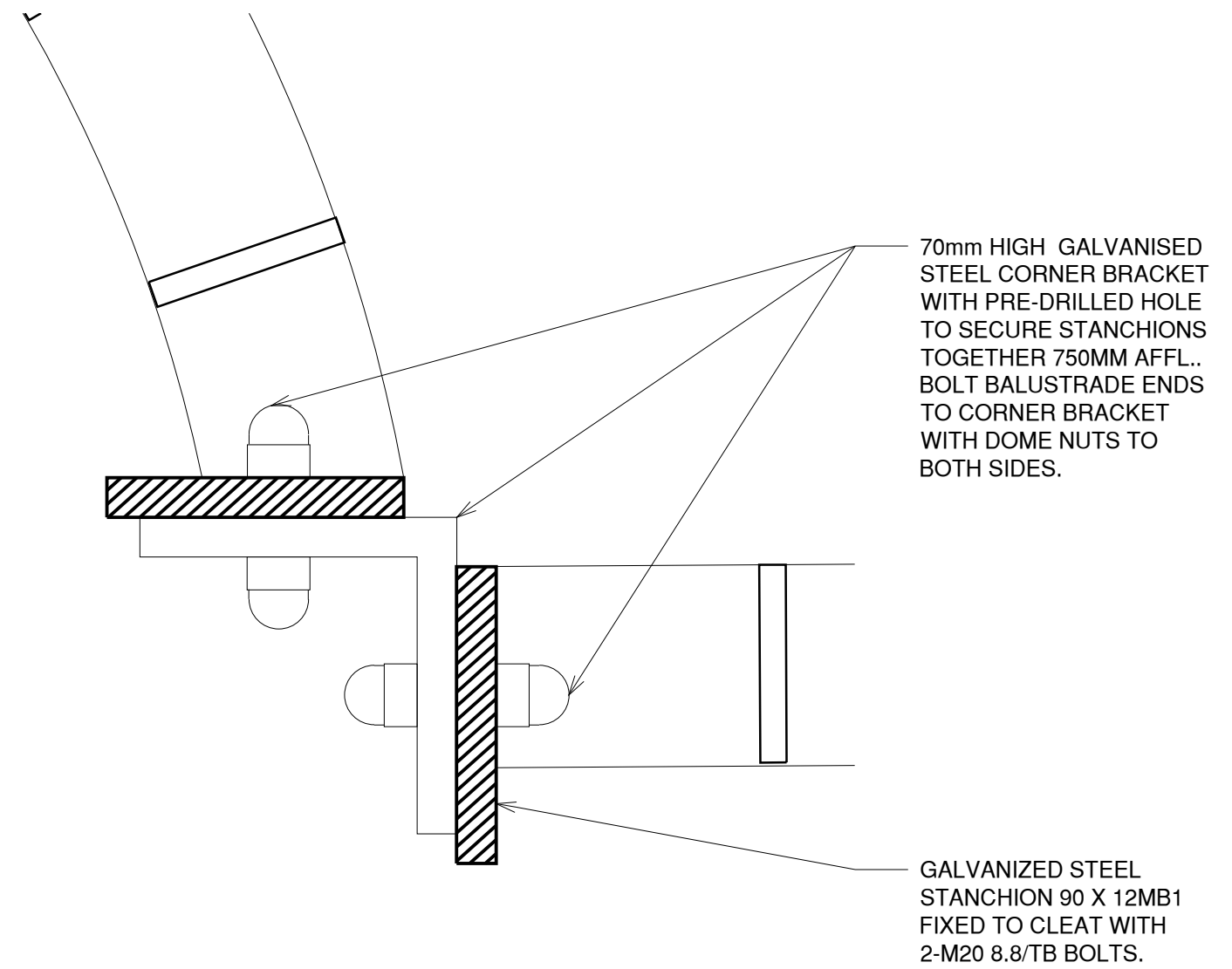
02 PANEL D TYPICAL SECTION  
1:10@A1



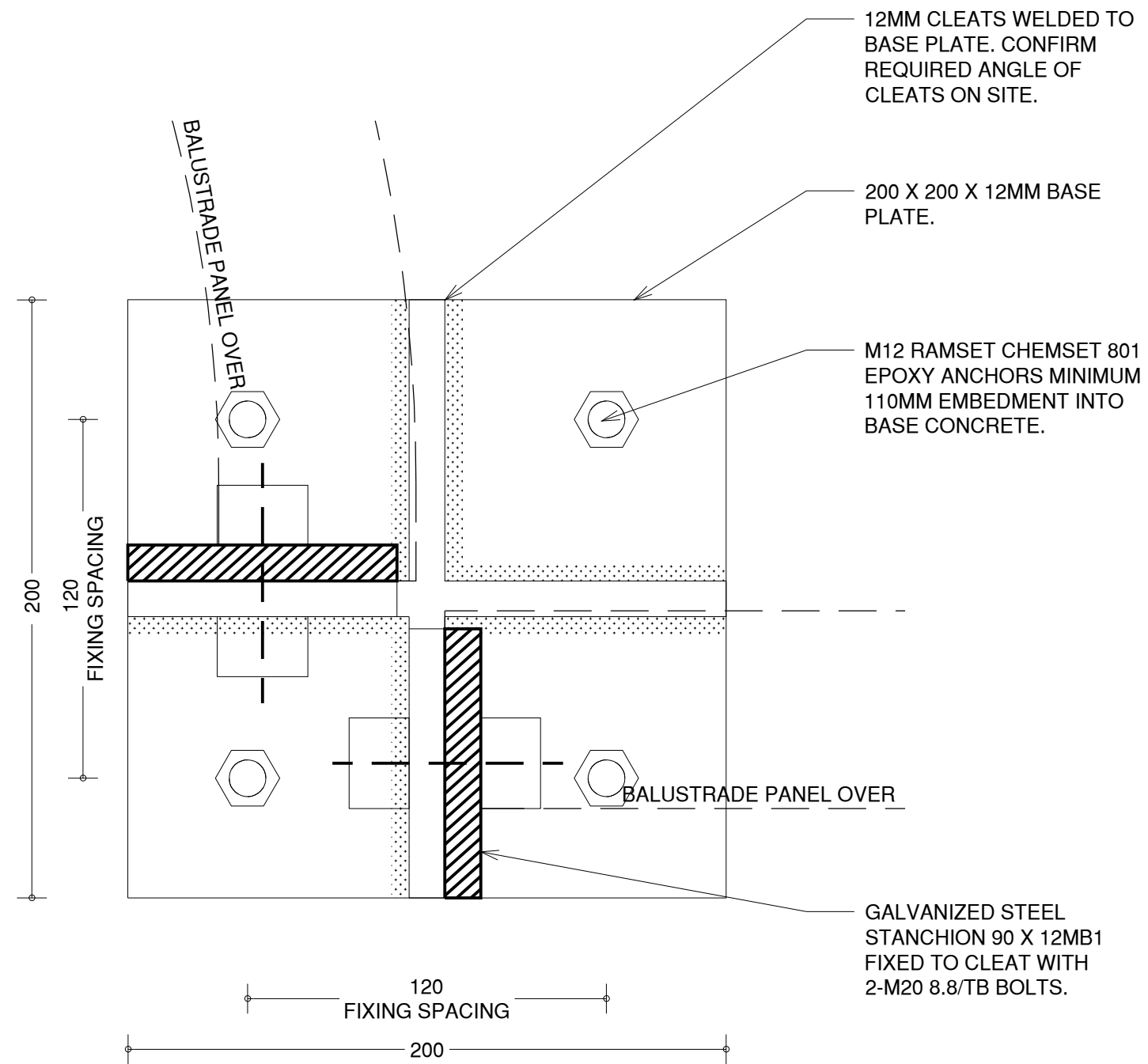
03 PANEL D HIGH LEVEL PLAN  
1:10@A1



04 PANEL D LOW LEVEL PLAN  
1:10@A1



05 CORNER CONNECTION DETAIL  
1:2@A1



06 CORNER BASE PLATE PLAN DETAIL  
1:2@A1

**DISCLAIMER:** Check and verify all dimensions prior to commencement of work. Seek clarification of inconsistencies / conflicts. Do not scale from the drawing. Any form of reproduction of this drawing in full or in part, without written permission of Conservation Studio Australia Pty Ltd constitutes an infringement of copyright. © This drawing is copyright and shall remain the property of Conservation Studio Australia Pty Ltd.

REVISION	DATE	DESCRIPTION
00	13.02.2025	ISSUE TO HERITAGE VICTORIA
-	-	-
-	-	-
-	-	-
-	-	-
-	-	-

FOR INFORMATION ONLY

**CLIENT:** Mount Macedon Memorial Cross Committee of Management

**ARCHITECT:**

**conservation studio**

The Block Arcade - Level 4 - Suite 421  
282-284 Collins Street Melbourne VIC 3000  
contact@conservationstudio.com.au

**PROJECT:** MMMC URGENT WORKS  
**ADDRESS:** MOUNT MACEDON VIC 3441

**PROJECT NO.:** 22060  
**DRAWN:** JR, LG  
**CHECKED:** DB

**DRAWING TITLE:** PROPOSED WORKS  
TYPICAL BALUSTRADE DETAILS  
2 OF 2 - PANEL TYPE D

**REVISION:** 00  
**SCALE:** 1:10; 1:2 @ A1

**DRAWING NO.:** 22060.08