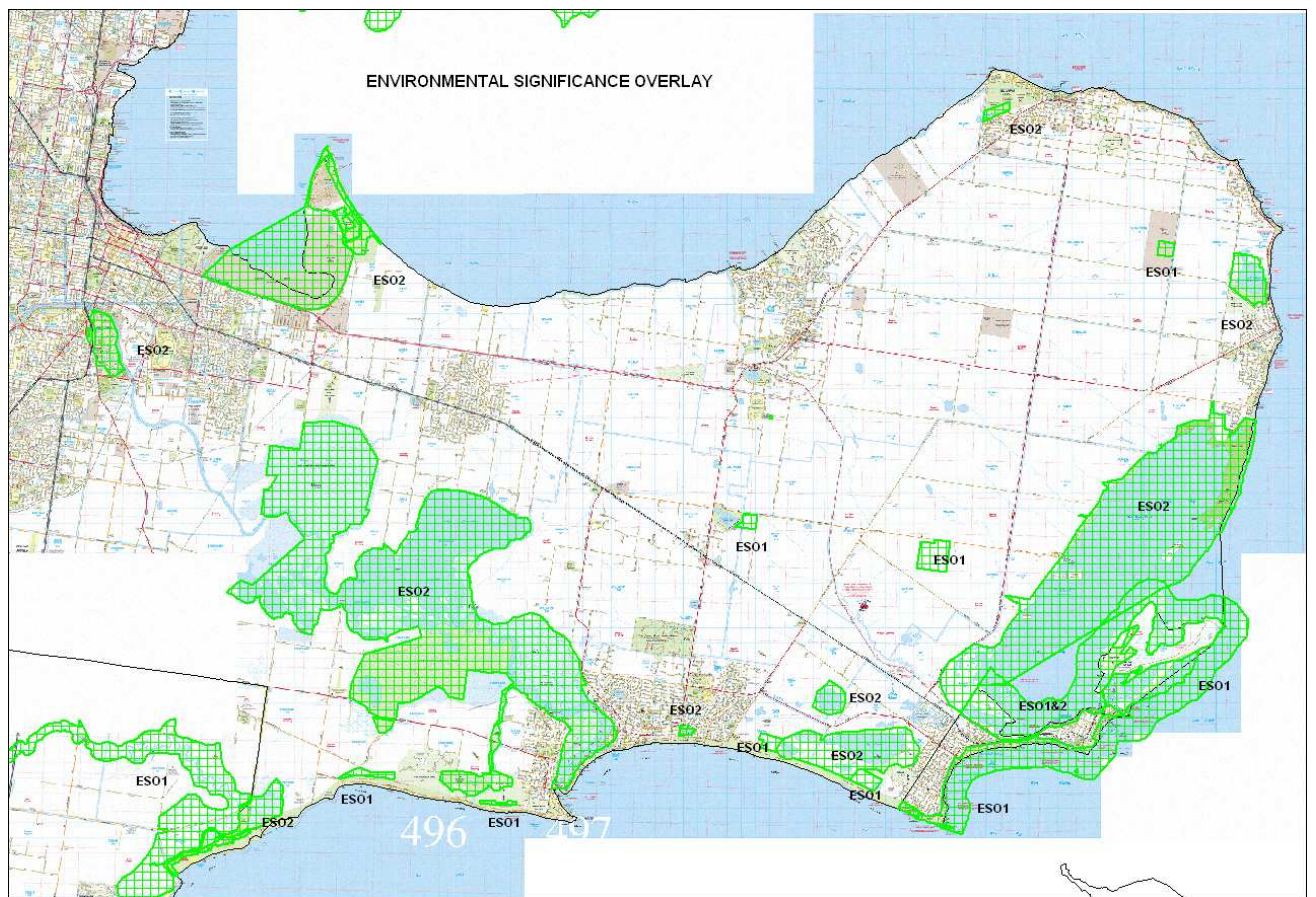


## appendix – Environmental Significance Overlay



### GREATER GEELONG PLANNING SCHEME

ESO1 – AREAS OF FLORA AND FAUNA HABITAT AND OF GEOLOGICAL AND NATURAL INTEREST

ESO2 – HIGH VALUE WETLANDS AND ASSOCIATED HABITAT PROTECTION [RAMSAR SITES]

### QUEENSCLIFFE PLANNING SCHEME

ESO1 – COASTAL AND FORESHORE AREAS

ESO2 – SWAN BAY AND MARINE AND TERRESTRIAL HABITATS

Areas mapped have been identified by the Department of Natural Resources and Environment as containing flora and fauna listed under the Flora and Fauna Guarantee Act 1988. In addition several of the areas mapped are subject to International Treaties.

### SURF COAST PLANNING SCHEME

ESO1 – WETLAND AND ASSOCIATED DRYLAND HABITAT PROTECTION

ESO2 – SPECIAL WATER SUPPLY CATCHMENT AREAS

For further information visit Planning Schemes Online at [www.dse.vic.gov.au/](http://www.dse.vic.gov.au/)